



Asaka Priority Summary Based on Most Recent 209's																Date: 6/30/2019		
Priority	Unit	Seq. #	Incident	Descriptive Location	Size in Acres	24 hr. Change	% Contained	Expected Contain Date	Complexity/IC	Crews Assigned			Helicopters Assigned			SMKJ	Critical Needs	Threats (24/48 hrs)
										T-1	T2-IA	T2	T-1	T-2	T-3			
New and emerging initial attack within Alaska																		
1	FAS	319	Shovel Creek	20 miles NW of Fairbanks	5,568.0	2,144.0	0	7/6	Type 2 Team McDonald	7	6	2	2	3	2	5 Water Tenders Fold-a-tanks or pumpkins - 50 Sprinkler Kits - 100	Private properties 5 Residential Subdivisions	
2	KKS	181	Swan Lake	5 miles NE of the community of Sterling	68,060.0	5,220.0	69	8/31	Type 2 Team Kurth/Sanford (t)	7	2	4	2	1	1	None	Threat has lessened to the following: Sterling Highway Corridor Moose Research Center Homer Electric transmission line Granite Construction worksite	
3	TAS	362	Boundary River	2 miles W of fire 913303	9,167.0	1,167.0	0	7/10	Type 3 IC Phillips/Miller (t)							2 T1 Crews Heavy helicopter T2 Helicopter	Residences/cabin Native Allotment Village of Northway	
4	MID	391	NINETYEIGHT CREEK	18 miles NE of Harding Lake	52.0	-	0		Bowers		1		1	1	26	3 T1 Crews	Cabins	
5	FAS	255	Caribou Creek	20 miles NE of North Pole	310.0	-	70	7/2	Type 3 Team Kobayashi/Krock (t)	2	2	3		2	1	8	2 T2IA Crews (replace timing out crews)	None
6	UYD	324	Hess Creek	29 miles SE of Steven's Village, AK	45,000.0	-	n/a	n/a	Type 3 Team Thaler							Helicopter Support WFM	3 mining camps with structures	
7	UYD	379	Christian River	10 miles NE of Christian Village	180.0	30.0	20	7/31	Tenneson	1					16	1 T1 Crew		
8	UYD	355	Eagle	3 miles from Eagle, AK	68.3	-	17	7/31	Baso	1	1				4	None	Endangered species Native Allotments Structures	
9	TAD	361	Lloyd Mountain	20 miles SE of Lloyd Mountain	7,101.0	5,301.0	n/a	7/31	Cazzaly						7	None	Two compounds with three structures each, two separate cabins	
10	UYD	342	Tinkduhl Lake	17 miles SE of Chalkyitisk, AK	No updated 209	45.0	50	7/27	Shalom						20	-	Native Allotments Structures	

Alaska Priority Summary Based on Most Recent 209's															Date: 6/30/2019			
Priority	Unit	Seq. #	Incident	Descriptive Location	Size in Acres	24 hr. Change	% Contained	Expected Contain Date	Complexity/IC	Crews Assigned			Helicopters Assigned			SMKJ	Critical Needs	Threats (24/48 hrs)
										T-1	T2-1A	T2	T-1	T-2	T-3			
<i>New and emerging initial attack within Alaska</i>																		
11	UYD	337	Hadweenzic River	26 miles NE of Beaver, AK	11,144.0	3,685.2	n/a	n/a	Sullivan	1						8	None	None
12	UYD	348	Tractor Trail 2	20 miles SW of Chalkyitsik, AK	2,366.0		n/a		Romero	1						2	None	Cabin Allotments
13	389		Foraker	22 miles SE of Kantishna, AK	5,144.0		n/a	n/a	Greenstein								-	Structures
14	TAD	318	Iksgiza	20 miles SE of Manley Hotpsrings	17.0	-	50	7/31	Jacobs		1						None	None
15	TAD	317	Snowshoe Creek		217.0				Unstaffed									
16	329		Victoria Mountain	3.5 miles NW of Vistoria Mountain	500.0	o	n/a	n/a	Unstaffed									None
17	UYD	262	Black River	53 miles NE of Circle, AK	8,258.3	0.1	n/a	n/a	Unstaffed									Village of Chalkyitsik
18	321		Little Crazy Mountain	43 miles NW of Central, AK	7,500.0	-	n/a	n/a	Unstaffed								None	None
19	TAD	312	Bergman Creek	28 miles SW of Allakaket, AK	1,731.4	-	n/a	n/a	Unstaffed								None	None

Coffee Brief

Date: June 30, 2019

Weather Summary

High pressure ridging continues to be the dominant weather feature over mainland Alaska today. This ridging is allowing for above normal temperatures and low RH to develop. The sea level pressure pattern is fairly flat, meaning that most winds are driven by local diurnal mountain/valley circulations.

A low pressure system moves from the Bering Sea to Alaska's Interior Sunday and through early Tuesday. This low pressure system will bring cooler weather and a period of rain to Alaska's Interior. The relief will be short-lived, however, as ridging will redevelop over mainland Alaska in the wake of this low. The ridging will bring a return of hotter and drier conditions to the Interior beginning late Tuesday.

Preparedness Levels & Alaska Fire Activity

Alaska	4	Light Initial Attack Activity
National	2	New Fires and Acres: 5 fires for 350.5 acres

Alaska Fuel Status [Alaska Fire and Fuels Map](#)

There currently no Fuels and Fire Behavior Advisories out for Alaska

Fuels/Fire Potential

The Initial Spread Index (ISI) for new starts is highest across the eastern and central Interior for winds and/or very dry fine fuels. Large fires continue to grow significantly in many areas.

Values of the Build-up Index (BUI) vary widely across mainland Alaska, but generally the deeper layers are supporting growth.

Expect fuel and terrain driven fires even with lighter winds.

Spruce Adjectives confirm that overall fire potential is peaking again across the state after slight moderation last Thursday.

Resources

Aviation within Alaska	
Jumpship	6
Air Tactical	15
Air Tankers	6
Scoopers	12
Utility	7
T1 Helicopter	4
T2 Helicopter	21
T3 Helicopter	11

Crews within Alaska			
Type 1	Available		AK
Type 1	Committed	2	AK
Type 2IA	Available		AK
Type 2IA	Committed	3	AK
Type 2 Agency	Available		AK
Type 2 Agency	Committed	3	AK
Type 2	Available		AK
Type 2	Committed	10	AK
Type 1	Available		L-48
Type 1	Committed	18	L-48
Type 2IA	Committed	18	L-48

Current Incident Details

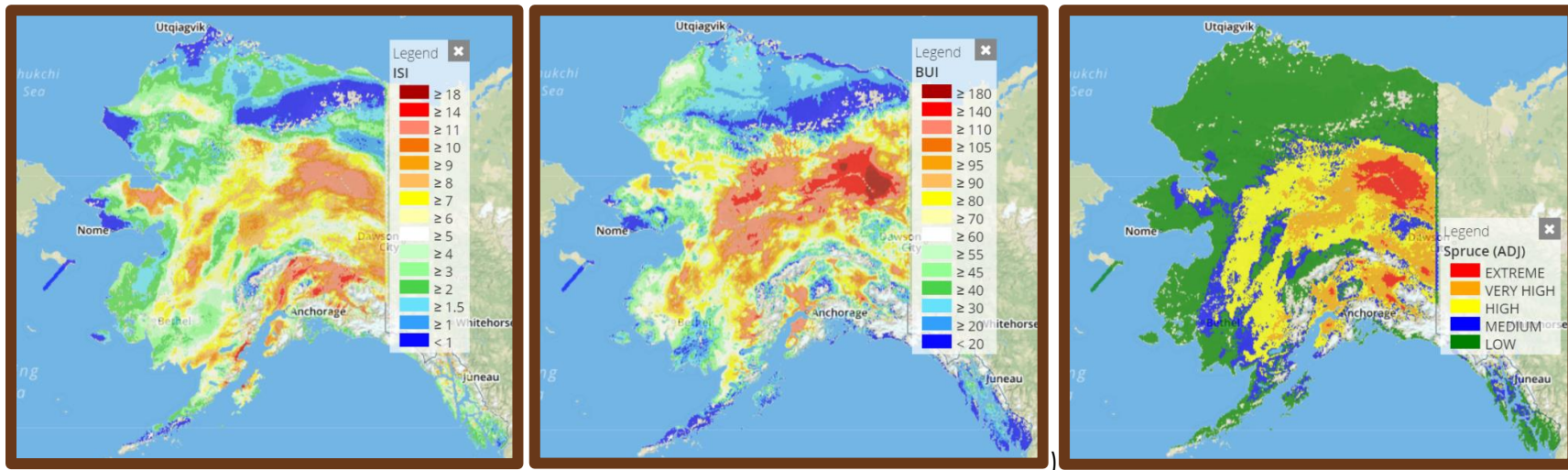
Fire 349 received a load of SMKJ

Fires 319 and 391 ran Tankers and Fire Bosses all day

New fire in Delta Area - 406 Rainbow 2 – received 4 loads of retardant/Blaze Tamer and 8 SMKJ – 150 acres

For additional Incident information refer to the [AICC Web Site](#).

Alaska Fire and Fuels



For additional fuels information visit <https://akff.mesowest.org/>

The Coffee Brief will be posted at PLs 4 and 5 only.

