

July 11, 2019

Current Incident Details



Alaska Priority Summary Based on Most Recent 209's																			
Priority	Unit	Seq. #	Incident	Descriptive Location	Size in Acres	24 hr. Change	% Contained/Completed	Expected Contain/C complete Date	Suppression Strategy	Complexity/IC	Total Personnel	Crews Assigned			Helicopters Assigned			Critical Needs (12 hrs)	Threats (24/48 hrs)
												T-1	T2	T2IA	T-1	T-2	T-3		
<i>New and emerging initial attack within Alaska is #1</i>																			
1	FAS	319	Shovel Creek	20 miles NW of Fairbanks	19,607.0	6,752.0	15	7/30	Full Suppression (100%)	Type 1 Team Allen, PNW Team 2	821	10	5	7	2	3	2	None	Private properties Residential Subdivisions
2	KKS	181	Swan Lake	5 miles NE of the community of Sterling	100,027.0	-	41	8/31	Confine (36%), Point Zone Protection (40%), Full Suppression (24%)	Type 2 Team Gales, NWIMT 13	350		1	5	3	1	2	None	Smoke Impact along highway Structures Infrastructure
3	CRS	461	Klutina River	Klutina River, Mile 17 East Side	175.0		0	7/30	Full Suppression (100%)	Type 3 IC Horner	39			1				(1) Restricted (2) Scoopers (1) T1 Crew (2) T2IA Crews Portable Repeater	Cabins Smoke Impact Salmon Fishery
4.1	TAS	362	Boundary River	8 miles SW of Northway	17,605.0	2,597.0	0	7/25	Full Suppression (100%)	Day	165		1	4		3	1	(1) T2IA Crew (3) T1 Crews	Residences/cabin Native Allotments Village of Northway Infrastructure
4.2	TAS	133	McArthur Creek	25 miles NE of Northway	24,086.0	1,736.0	n/a	n/a	Point Zone Protection (100%)	Day	11							(1) T3 Helicopter	Hunting, Trapping, Mining Operations Infrastructure
5.1	MSS	429	Montana Creek	3 miles E of HWY 4 and 13 miles S of Talkeetna, AK	367.0	-	40	7/16	Full Suppression (100%)	Type 2 Team NW Team 12 Glazier/Shindelar (t)	143		2	1		1		None	Diminished risk to: Structures Infrastructure
5.2	MSS	451	Malaspina	13 miles S of Talkeetna, AK	85.0	-	35	7/13	Full Suppression (100%)	Type 2 Team NW Team 12 Glazier/Shindelar (t)	76		2	1		1		(2) T6 or T3 Enginges	Structures Infrastructure
6	UYD	466	Chalkyitsik Complex																
6.1	UYD	407	Bearnose Hill	10 miles SE of Chalyitsik, AK	36,344.0	15,072.0	n/a	n/a	Point Zone Protection (100%)	Fansler/Hatfield (t)	79	2	1	1				None	Structures Native Allotments
6.2	UYD	367	Frozen Calf	25 miles NE of Chalkyitsik	110,000.0	-	n/a	n/a	Monitor (100%)	Fansler/Hatfield (t)	30							(2) T1 Crews	Native Allotments Structures Village of Chalkyitsik
6.3	UYD	348	Tractor Trail 2	20 miles SW of Chalkyitsik, AK	10,055.0		n/a	7/31	Point Zone Protection (100%)	Type 4 IC Henderson	0							None	None
6.4	UYD	424	Tettjajik Creek	57 miles E of Chalkyitsik, AK	1,200.0		n/a	na	Monitor (100%)	UYD Duty Officer	0							None	Native Allotments

Asaka Priority Summary Based on Most Recent 209's

Priority	Unit	Seq. #	Incident	Descriptive Location	Size in Acres	24 hr. Change	% Contained/ Completed	Expected Contain/C omplete Date	Suppression Strategy	Complexity/IC	Total Personnel	Crews Assigned			Helicopters Assigned			Critical Needs (12 hrs)	Threats (24/48 hrs)
												T-1	T2	T2IA	T-1	T-2	T-3		
New and emerging initial attack within Alaska is #1																			
7	UYD	324	Hess Creek	29 miles SE of Steven's Village	149,428.0	-	n/a	n/a	Monitor (30%), Point Zone Protection (70%)	Type 3 Team Zimmerman/Addey (t)	90							None	(3) Mining Camps Residential Structures (1) Radio Tower Public Use Cabins Infrastructure
8	TAD	361	Lloyd Mountain	20 miles SE of Lloyd Mountain	18,496.0	-	n/a	n/a	Point Zone Protection (100%)	Type 4 IC Cochran	40	1	1					None	Structures
9	UYD	349	Chandalar River	5 miles SW of Venetie	7,892.0	-	n/a	n/a	Point Zone Protection (100%)	Type 4 IC Kehoe	69	1	1	1				(1) T1 or T2 Crew	Native Allotments
10	TAD	312	Bergman Creek	28 miles SW of Allakaket, AK	16,500.0	521.0	n/a	n/a	Point Zone Protection (100%)	Type 4 IC Cramer/Mark (t)	19					1	Portable Repeater Frequencies	Native Allotments	
11	UYD	337	Hadweenzic River	26 miles NE of Beaver	34,844.0	-	n/a	n/a	Point Zone Protection (100%)	Type 3 IC Harding/Weakland (t)	30	1						None	Occupied structures and allotments Historical Structure
12	TAD	389	Foraker	22 miles SE of Kantishna	11,970.0	-	n/a	n/a	Point Zone Protection (100%)	Type 4 IC Greenstein	6					1	None	Structures	
13	DAS	409	Rainbow 2	Rainbow Lake	5,000.0	-	n/a	n/a	Point Zone Protection (100%)	Zumhofe/Grubbs (t)	15						(1) T2IA Crew (8) SMKJ Helicopter	Community of Richardson Clear	
14	UYD	262	Black River	53 miles NE of Circle, AK	32,659.0	-	n/a	n/a	Point Zone Protection (100%)	Type 4 IC Schroeder	0							None	Allotments Cabins
15.1	MID	391	NINETYEIGHT CREEK	18 miles NE of Harding Lake	69.0	-	75	7/31	Full Suppression (100%)	Type 3 Team Cox	105		3	2		2		Qualified Shooter	Native Allotments Structures
15.2	MID	390	Beaver	20 miles Southwest of Granite Tors Mountain	12,960.0	3,960.0	n/a	n/a	Monitor(100%)	Type 3 Team Cox	17							None	Infrastructure
16	UYD	217	Yukon Charley	53 miles northwest of Eagle, Ak	1,049.2	-	n/a	n/a	Monitor (100%)	UYD Duty Officer								None	None

Coffee Brief

Date: July 11, 2019

Weather Summary

High pressure is pulling apart over northwest Alaska, creating a narrow, weaker ridge over the state from northwest to southeast. Hot and dry weather is expected over northern Alaska again today, with temperatures moderating in South Central and the Panhandle by a few degrees. The southern part of the state will also see higher humidities into the weekend with a marine push coming in from the south.

There is the likelihood for some lightning in parts of southern Alaska today, and Red Flag Warnings are in effect for much of the state. Expect little precipitation in the north, wetter storms in the south, and new ignitions are quite possible in the dry fuels as a result. This area of convection will become more widespread over the southern 2/3 of the state in the next few days, and Red Flag Warnings are active through Friday.

At this time, it looks like the center of the high remains over the state, though in a weaker form, through the weekend. Temperatures will remain a bit warm, while allowing a chance for waves with showers and thunderstorms to roll through late in the week and into the weekend. Though wetting rains may occur in the south, storms will be mostly dry in the north. Early next week may bring a more substantial pattern change, which will bring some cooler temperatures, a better chance for slightly wetter showers, and a better likelihood of clearing out some smoke!

Preparedness Levels & Alaska Fire Activity

Alaska	5
National	2

Light Initial Attack Activity New Fires and Acres: 19 fires 1201.1 acres

Alaska Fuel Status [Alaska Fire and Fuels Map](#)

A [Fuels and Fire Behavior Advisory](#) has been issued for Alaska.

Fuels/Fire Potential

Red Flags for lightning will test the validity of fuel moisture codes in Copper River, Southwest Alaska, and even along the ALCAN Border today. Lightning will move to a wider area tomorrow. It's expected that a good number of ignitions could lead to high initial attack.

All indices are highlighting South Central, Copper River Basin, Upper Yukon, and west of the Alaska Range with Extreme values. This will support significant growth where active fires exist. FWI shows that lightning ignition and resistance to control is widespread. Spruce Adjectives reinforce this, and indicate potential for a major event.

Smoke is impacting solar heating across the southern 2/3 of the state. This has been slowing fire activity with reports of creeping and single tree torching vs those without smoke describing running and torching. Expect this to continue, though the relief is only temporary and any sunshine will quickly step up fire behavior.

Resources

Aviation within Alaska	
Jumpship	7
Air Tactical	16
Air Tankers	7
Scoopers	12
Utility	10
T1 Helicopter	9
T2 Helicopter	31
T3 Helicopter	16

Crews Committed within Alaska		
Type 1	2	AK
Type 2IA	4	AK
Type 2	10	AK
Module	1	AK
Type 1	15	L-48
Type 2IA	28	L-48
Type 2	7	L-48
Module	8	L-48
Total Crews	75	

- Five crews departing today
- An additional ten crews arriving tomorrow

Departing Jet Schedule

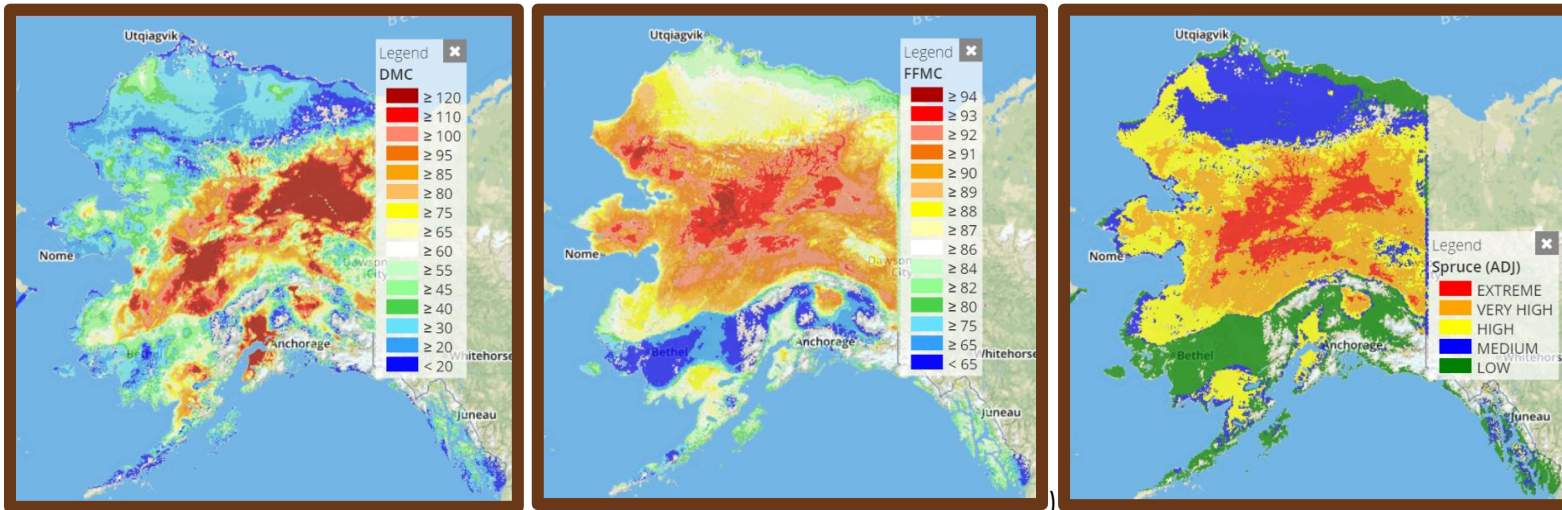
Jet #4 NOPS	Jet #5 NR	Jet #6 GB	Jet #7 NOPS
RDD - FBK	BIL - FBK	BOI - FBK	RDD - FBK
MOB 6/25 - DMOB 7/11	MOB 6/26 - DMOB 7/12	MOB 6/27 - DMOB 7/13	MOB 6/30 - DMOB 7/15
Redding T2IA	Devils Canyon T2IA	S Idaho Interagency T2IA	Salmon River IHC
Diamond Mtn T2IA	Helena IHC	Sawtooth IHC	Mendocino IHC
Tahoe IHC	Billings Crew #1 T2IA	Boise IHC	Feather River T2IA
Folsom T2IA	Eastern Montana T2IA	Boise Crew 8 T2IA	Klamath Crew T2IA
Truckee IHC	Great Northern T2IA	Payette Regulars T2IA	Lassen Crew #9 T2IA

Arriving Jet Schedule

Jet #14 EA	Jet #15 SOPS
Commercial - FBK	
MOB 7/12 -DMOB	MOB 7/12 -DMOB
Midwin IHC	Bear Divide IHC
MOCC #1 - T2IA	Dalton IHC
MOCC #2 - T2IA	Inyo IHC
Ohio State Crew - T2IA	Breckenridge IHC
NJS #1 - T2IA	Vista Grande IHC

- Fire 485 received a load of smokejumpers
- Fire 483 received a load of smokejumpers
- Fire 474 received a load of smokejumpers
- Fire 487 received a load of smokejumpers
- Fire 459 released all 8 smokejumpers
- Fire 451 released 14 smokejumpers
- Four smokejumpers returned from Chalkyitsik
- Aviation continues at a high pace
- Additional ASM B-4 ordered
- Visibility continues to be an issue
- No competition for aviation resources

Alaska Fire and Fuels



For additional fuels information visit <https://akff.mesowest.org/>

The Coffee Brief will be posted at PLs 4 and 5 only.

