



Coffee Brief

Date: July 21, 2019

Yesterday's Weather Summary

Temperatures will be cooler and RHs higher today for much of the state, with most noticeable decreases in the eastern Interior, South Central, and Copper River Basin. There is a front that will drop down from the Arctic today which will bring significant precipitation to Northwest and the Brooks Range and points north, but will likely only bring spotty showers to the northern Interior. Meanwhile, scattered showers and a few wet thunderstorms will dwindle over Alaska's southeast Interior today and tomorrow.

The Upper Yukon Valley will approach Red Flag conditions again today as southwest winds increase to gusts near 30 mph...but RH values will be too high, and temperatures may barely make 75 degrees.

The cooler weather will remain through the weekend, with temperatures in South Central starting to rise again on Sunday, and in the Interior on Monday as the ridge builds back in to the north and east. Beyond that point, model confidence is poor with great disparity; overall, it looks like conditions will be warmer and drier in the east and cooler and damper in the west. Widespread precipitation remains elusive for most of the state.

Preparedness Levels & Alaska Fire Activity

| | |
|----------|---|
| Alaska | 5 |
| National | 2 |

| |
|---|
| Light Initial Attack Activity New Fires and Acres: 2 Fires 2.1 acres |
|---|

Alaska Fuel Status [Alaska Fire and Fuels Map](#)

A [Fuels and Fire Behavior Advisory](#) has been issued for Alaska.

Fuels/Fire Potential

Cooler, damper weather has moderated FFMCs across most of the state. Ignition potential may be down slightly, but FFMC responds quickly to changes in weather. Expect quick escalation again beginning Monday.

DMC represents resistance to control. Many areas still show Very High to Extreme values, which correlate to difficulty catching fires. DC represents resistance to extinguishment. Elevated values show deep drying of the deep duff layers, where fires burn deep and fuels pose mop up problems.

Resources

| Aviation within Alaska | |
|------------------------|----|
| Jumpship | 7 |
| Air Tactical | 14 |
| Air Tankers | 7 |
| Scoopers | 12 |
| Utility | 12 |
| T1 Helicopter | 3 |
| T2 Helicopter | 27 |
| T3 Helicopter | 17 |

| Crews Committed within Alaska | | |
|-------------------------------|-----------|------|
| Type 1 | 3 | AK |
| Type 2 | 5 | AK |
| Type 2IA | 4 | AK |
| Module | 0 | AK |
| Type 1 | 15 | L-48 |
| Type 2 | 6 | L-48 |
| Type 2IA | 20 | L-48 |
| Module | 11 | L-48 |
| Total Crews | 64 | |

Departing Crews

| Jet #10 NR | Jet #11 NOPS | Jet #12 NW | Jet #13 NR |
|---------------------|---------------------|----------------------|------------------------------|
| MSO - ANC | RDD - FBK | RDM - FBK | MSO - ANC |
| MOB 7/6 - DMOB 7/21 | MOB 7/8 - DMOB 7/23 | MOB 7/10 - DMOB 7/25 | MOB 7/10 - DMOB 7/25 |
| Entiat IHC | Elk Mountain T2IA | Union IHC | Bitterroot IHC |
| Rogue River IHC | Modoc T2IA | Prineville IHC | Flathead IHC |
| Warm Springs IHC | Eldorado IHC | Mt Baker T2IA | Grangeville Interagency T2IA |
| Colville Mob 1 T2IA | American River IHC | W/F Middle Fork T2IA | Kootenai T2IA |
| SRV #14 T2IA | Mad River IHC | Bly RD Crew 2 T2IA | Lewis & Clark Regs T2IA |

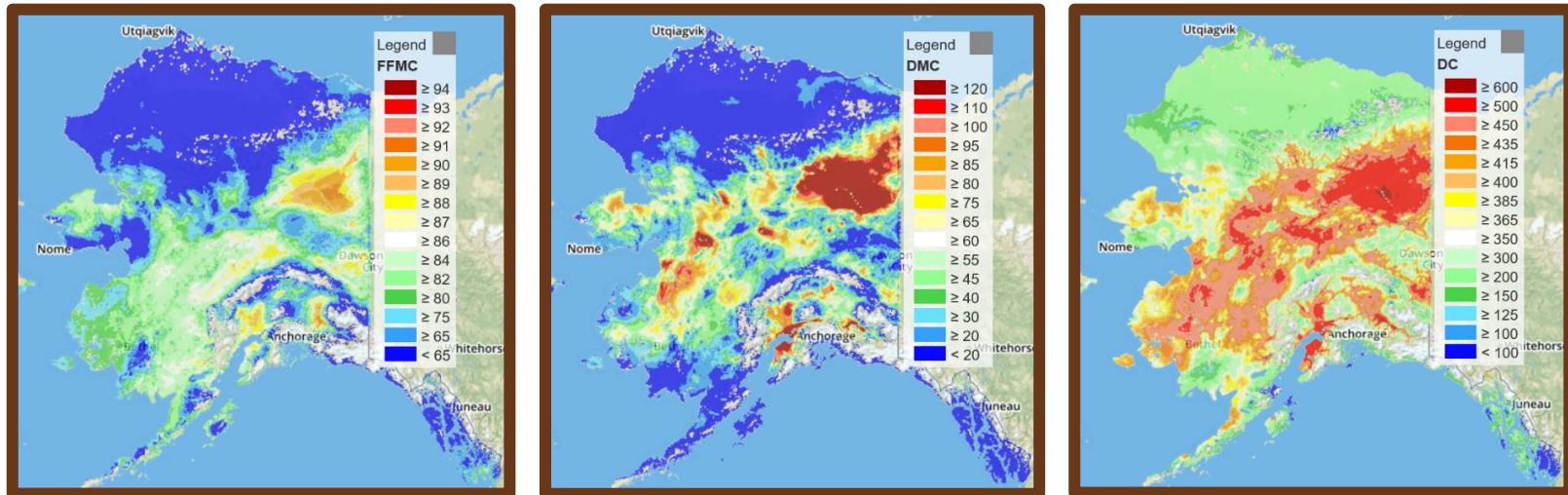
Tactical Notes

- Flew AA and FB on fire 616 and provided relief AA on Chalkyitsik Complex for 1 fuel cycle.
- Prepositioned 1 AA in GAL and 2 FBs returned to FBK from GAL.

| Top 12 Alaska Priority Summary Based on Most Recent 209's | | | | | | | | | | | | | | | | | | | |
|---|------|--------|---------------------|---|---------------|---------------|-----------------------|----------------------------------|--|--|-----------------|----------------|----|------|----------------------|-----|-------------------------------|---|---|
| Priority | Unit | Seq. # | Incident | Descriptive Location | Size in Acres | 48 hr. Change | % Contained/Completed | Expected Contain/C Complete Date | Suppression Strategy | Complexity/IC | Total Personnel | Crews Assigned | | | Helicopters Assigned | | | Critical Needs | Threats |
| | | | | | | | | | | | | T-1 | T2 | T2/A | T-1 | T-2 | T-3 | | |
| 1 | UYD | 466 | Chalkyitsik Complex | | 414,899.0 | | | | | | | | | | | | | | |
| 1.1 | UYD | 407 | Bearnose Hill | 10 miles SE of Chalyitsik, AK | 113,534.0 | 32,762.0 | n/a | 8/31 | Point Zone Protection (100%) | Type 2 Team Kurth/Sanford (t) Alaska | 235 | 2 | 2 | 3 | 1 | 1 | (2) Fixed wing water Scoopers | Structures Native Allotments | |
| 1.2 | UYD | 367 | Frozen Calf | 25 miles NE of Chalkyitsik | 195,646.0 | 43,182.0 | n/a | 8/31 | Point Zone Protection (100%) | | | | | | | | | Structures Native Allotments | |
| 1.3 | UYD | 348 | Tractor Trail 2 | 20 miles SW of Chalkyitsik, AK | 78,966.0 | 18,984.0 | n/a | 8/31 | Point Zone Protection (100%) | | | | | | | | | Structures Native Allotments | |
| 1.4 | UYD | 424 | Tettjajik Creek | 57 miles E of Chalkyitsik, AK | 26,723.0 | 6,108.0 | n/a | 8/31 | Point Zone Protection (100%) | | | | | | | | | Structures Native Allotments | |
| 2 | FAS | 319 | Shovel Creek | 20 miles NW of Fairbanks | 21,309.0 | 11.0 | 51 | 7/30 | Full Suppression (100%) | Type 2 Team Northern Rockies Team 6, Fry | 477 | 2 | 1 | 6 | 1 | 3 | 2 | None | Private properties Residential Subdivisions |
| 3 | KKS | 181 | Swan Lake | 5 miles NE of the community of Sterling | 102,027.0 | 849.0 | 72 | 8/31 | Confine (21%), Point Zone Protection (29%), Full Suppression (50%) | Type 2 Team Pisarek | 315 | 1 | | 3 | 4 | 2 | 2 | None | Structures Infrastructure |
| 4 | FAS | 508 | Kobe | 62 miles SW of Fairbanks, AK | 1,146.0 | - | 20 | 7/27 | Full Suppression (100%) | Type 3 IC Kendall | 157 | 1 | 1 | 3 | | | | None | Structures |
| 5 | TAD | 485 | Grouse Creek | 9 mi NE of Rampart, AK | 15,500.0 | 10,536.6 | n/a | 8/31 | Point Zone Protection (100%) | Type 3 IC Long/Montoyo (t) | 87 | 1 | 1 | 1 | | | 1 | None | Community of Rampart Native Allotments Structures |
| 6.1 | UYD | 337 | Hadweenzic River | 26 miles NE of Beaver | | 49,636.0 | n/a | 7/31 | Point Zone Protection (100%) | Cornucopia Complex | 94 | 2 | | | | | (1) Helicopter Recon Flight | Occupied structures and allotments Historical Structure | |
| 6.2 | UYD | 493 | Tony Slough | 8 miles NE of Beaver, AK | | 1,526.0 | n/a | 7/31 | Point Zone Protection (100%) | | 57 | 1 | | 1 | | | | Structures Native Allotments | |
| 7 | SWS | 534 | Smith Creek | 2 miles W of Donlin Mine | 4,700.0 | - | 60 | 7/27 | Point Zone Protection (100%) | Type 4 IC Kirkman | 22 | 1 | | | | | None | Structures Mining Infrastructure | |
| 8 | DAS | 409 | Rainbow 2 | Rainbow Lake | 15,000.0 | 3,081.0 | 2 | 12/31 | Point Zone Protection (100%) | Type 3 Team Zumhofe/Grubbs (t) | 89 | | | 3 | | | Type 2 Helicopter | Communities of Richardson Clear and South Bank | |
| 9 | UYD | 349 | Chandalar River | 5 miles SW of Venetie | | 11,000.0 | n/a | 7/31 | Point Zone Protection (100%) | Cornucopia Complex | 87 | 2 | 1 | 1 | | | (1) Crew A/G Frequency | Native Allotments | |
| 10 | SWS | 498 | Kolmakof Hills | E of Suter Creek and West of Kalmakof River | 9,573.0 | 0.8 | 95 | 7/31 | Point Zone Protection (100%) | Type 5 IC Biedshield | 26 | 1 | | | | 1 | None | Structures | |
| 11 | SWS | 487 | McCally Creek | 1 mile S of Red Devil | 3,098.0 | 764.0 | n/a | 8/2 | Point Zone Protection (100%) | Type 4 IC Baumgartner/Spargo (t) | 48 | 1 | 1 | | | | None | Village of Red Devil | |
| 12 | UYD | 324 | Hess Creek | 29 miles SE of Steven's Village | 173,467.0 | - | n/a | 7/31 | Monitor (30%), Point Zone Protection (70%) | Type 3 Team Zimmerman | 83 | | 3 | | | | 1 | (1) Water Tender | (3) Mining Camps Residential Structures (1) Radio Tower Public Use Cabins |

For additional Incident information refer to the [AICC Web Site](#).

Alaska Fire and Fuels



For additional fuels information visit <https://akff.mesowest.org/>

The Coffee Brief will be posted at PLs 4 and 5 only.

