



Coffee Brief

Date: July 22, 2019

Yesterday's Weather Summary

Temperatures will be cooler and RHs higher today for much of the state, with most noticeable decreases in the eastern Interior, South Central, and Copper River Basin. There is a front that will drop down from the Arctic today which will bring significant precipitation to Northwest and the Brooks Range and points north, but will likely only bring spotty showers to the northern Interior. Meanwhile, scattered showers and a few wet thunderstorms will dwindle over Alaska's southeast Interior today and tomorrow.

The Upper Yukon Valley will approach Red Flag conditions again today as southwest winds increase to gusts near 30 mph...but RH values will be too high, and temperatures may barely make 75 degrees.

The cooler weather will remain through the weekend, with temperatures in South Central starting to rise again on Sunday, and in the Interior on Monday as the ridge builds back in to the north and east. Beyond that point, model confidence is poor with great disparity; overall, it looks like conditions will be warmer and drier in the east and cooler and damper in the west. Widespread precipitation remains elusive for most of the state.

Preparedness Levels & Alaska Fire Activity

Alaska	5
National	2

Light Initial Attack Activity New Fires and Acres: 5 Fires 3.7 acres

Alaska Fuel Status [Alaska Fire and Fuels Map](#)

A Fuels and Fire Behavior Advisory remains in effect for Alaska.

Fuels/Fire Potential

FWI continues to show the most potential in the Upper Yukon Zone for large fire growth despite cooler and damper conditions.

The continued severity of the season is highlighted by the Very High to Extreme BUI values across the Interior, South Central, Copper River and the Kenai Peninsula. The temporary moderation in weather conditions is not enough to affect the deeper duff layers. Elevated burning conditions will return across much of the Interior over the next couple of days.

Resources

Aviation within Alaska	
Jumpship	7
Air Tactical	14
Air Tankers	7
Scoopers	12
Utility	12
T1 Helicopter	3
T2 Helicopter	25
T3 Helicopter	18

Crews Committed within Alaska		
Type 1	3	AK
Type 2	6	AK
Type 2IA	4	AK
Module	0	AK
Type 1	12	L-48
Type 2	5	L-48
Type 2IA	19	L-48
Module	12	L-48
Total Crews	61	

Departing Crews

Jet #13 NR	Jet #14 EA
MSO - ANC	Commercial - FBK
MOB 7/10 -DMOB 7/26	MOB 7/12 -DMOB 7/27
Bitterroot IHC	Midewin IHC
Flathead IHC	MOCC #1 - T2IA
Grangeville Interagency T2IA	MOCC #2 - T2IA
Kootenai T2IA	Ohio State Crew - T2IA
Lewis & Clark Regs T2IA	NJS #1 - T2IA

Tactical Notes

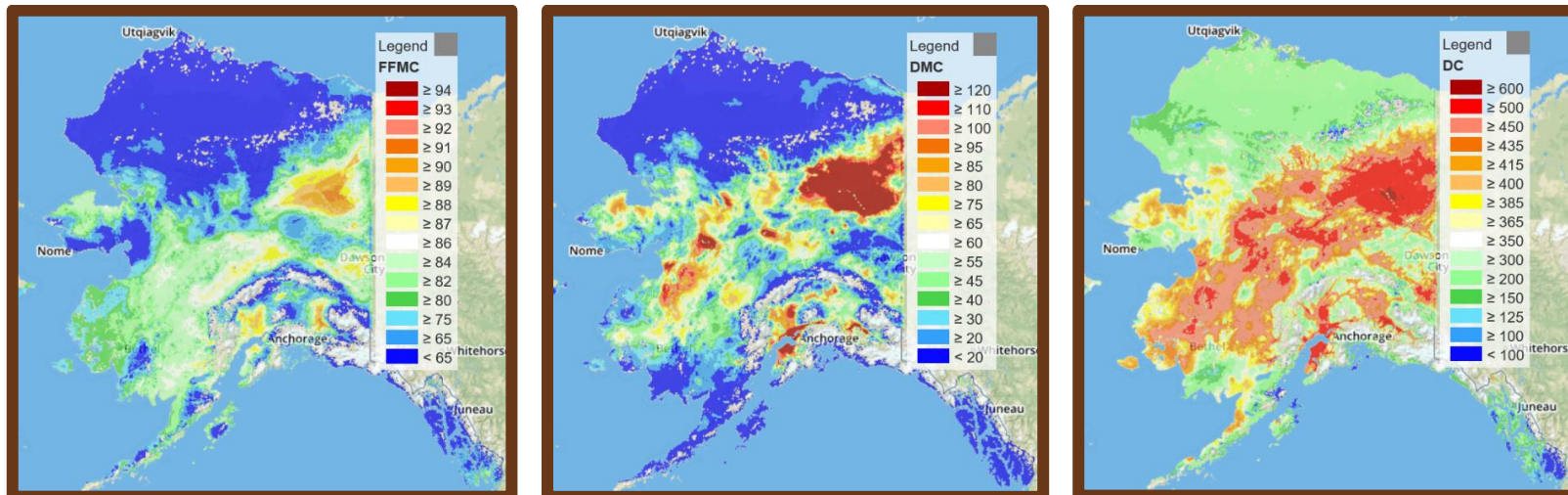
- Fire 639 flew 2 AA`s, 4 FB`s, 1 load each from 3 LATs, and requested 3 IA loads of SMKJ out of FBK.
- Air Attack also flew fire 485 and 1 fuel cycle on fire 466 as relief.
- The IA load out of MCG returned to FBK as well as 4 SMKJ out of GAL. Leaving 0 SMKJ in MCG and 10 SMKJ in GAL.
- J-07 had an engine failure in flight to FBK and returned to GAL and will RON there.
- Ran multiple PC mission on 349 and a couple other fires.
- Scooper group out of PAQ was released at 2200 and is slated to fly back to Canada in the AM.

Top 12 Alaska Priority Summary Based on Most Recent 209's																			
Priority	Unit	Seq. #	Incident	Descriptive Location	Size in Acres	48 hr. Change	% Contained/Completed	Expected Contain/C complete Date	Suppression Strategy	Complexity/IC	Total Personnel	Crews Assigned			Helicopters Assigned			Critical Needs	Threats
												T-1	T2	T2/A	T-1	T-2	T-3		
1		466	Chalkyitsik Complex		422,023.0														
1.1	UYD	407	Bearnose Hill	10 miles SE of Chalyitsik, AK	113,534.0	-	n/a	8/31	Point Zone Protection (100%)	Type 2 Team Kurth/Sanford (t) Alaska	276	1	3	5	1	1	(2) Fixed wing water Scoopers		Structures Native Allotments
1.2		367	Frozen Calf	25 miles NE of Chalkyitsik	202,174.0	6,528.0	n/a	8/31	Point Zone Protection (100%)										Structures Native Allotments
1.3		348	Tractor Trail 2	20 miles SW of Chalkyitsik, AK	78,966.0	-	n/a	8/31	Point Zone Protection (100%)										Structures Native Allotments
1.4		424	Tettjajik Creek	57 miles E of Chalkyitsik, AK	27,319.0	596.0	n/a	8/31	Point Zone Protection (100%)										Structures Native Allotments
2	FAS	319	Shovel Creek	20 miles NW of Fairbanks	21,309.0	-	51	7/30	Full Suppression (100%)	Type 2 Team Northern Rockies Team 6, Fry	412		2	4	1	3	2	None	Private properties Residential Subdivisions
3	KKS	181	Swan Lake	5 miles NE of the community of Sterling	102,027.0	-	72	8/31	Confine (21%), Point Zone Protection (29%), Full Suppression (50%)	Type 2 Team Pisarek	341	1		4	1	1	1	None	Structures Infrastructure
4	FAS	508	Kobe	62 miles SW of Fairbanks, AK	896.0	(250.0)	50	7/27	Full Suppression (100%)	Type 3 IC Kendall	164	1	1	2				None	Structures
5	TAD	485	Grouse Creek	9 mi NE of Rampart, AK	17,500.0	2,000.0	n/a	8/31	Point Zone Protection (100%)	Type 3 IC Long/Montoyo (t)	87	1	1	1			1	(2) T1 Crews	Community of Rampart Native Allotments Structures
6		899	Comucopia Complex		71,830.8														
6.1	UYD	337	Hadweenzic River	26 miles NE of Beaver	54,953.0	-	n/a	7/31	Point Zone Protection (100%)	UYD Duty Officer	330	9	4	4			(1) Helicopter w/ PSD and Bucket		Occupied structures and allotments Historical Structure
6.2		493	Tony Slough	8 miles NE of Beaver, AK	4,937.0	-	n/a	7/31	Point Zone Protection (100%)										Structures Native Allotments
6.3		572	East Fork Chandalar	25 miles N of Venetie	143.0	-	n/a		Point Zone Protection (100%)										Native Allotments
6.4		573	Pitka	45 miles NW of Beaver	545.0	-	n/a		Monitor (100%)										
6.5		594	Thazzik Mountain	25 miles NW of Venetie	300.0	-	n/a		Monitor (100%)										
6.6		601	Coal River	29 miles NW of Venetie	40.6	-	n/a		Monitor (100%)										
6.7		602	The Woodsman	31 miles NW of Venetie	0.1	-	n/a		Monitor (100%)										
6.8		621	Trail Creek	50 miles NW of Beaver	55.0	-	n/a		Monitor (100%)										
6.9		622	Sixty-One Mountain 1	38 miles N of Beaver	0.1	-	n/a		Monitor (100%)										

Top 12 Alaska Priority Summary Based on Most Recent 209's																			
Priority	Unit	Seq. #	Incident	Descriptive Location	Size in Acres	48 hr. Change	% Contained/Completed	Expected Contain/C Complete Date	Suppression Strategy	Complexity/IC	Total Personnel	Crews Assigned			Helicopters Assigned			Critical Needs	Threats
												T-1	T2	T2/A	T-1	T-2	T-3		
7	SWS	534	Smith Creek	2 miles W of Donlin Mine	11,200.0	6,500.0	60	7/27	Point Zone Protection (100%)	Type 4 IC Kirkman	22	1						None	Structures Mining Infrastructure
8	DAS	409	Rainbow 2	Rainbow Lake	15,000.0	-	n/a	12/31	Point Zone Protection (100%)	Type 3 Team Zumhofe/Grubbs (t)	69			2				Type 2 Helicopter	Communities of Richardson Clear and South Bank
9	UYD	349	Chandalar River	5 miles SW of Venetie	11,000.0	-	n/a	7/31	Point Zone Protection (100%)	Comucopia Complex								Native Allotments	
10	SWS	498	Kolmakof Hills	E of Suter Creek and West of Kalmakof River	9,573.0	-	95	7/31	Point Zone Protection (100%)	Type 5 IC Biedshield	21	1						None	Structures
11	SWS	487	McCally Creek	1 mile S of Red Devil	3,384.5	286.5	n/a	8/2	Point Zone Protection (100%)	Type 4 IC Baumgartner/Spargo (t)	25	1						None	Village of Red Devil
12	UYD	324	Hess Creek	29 miles SE of Steven's Village	173,467.0	-	n/a	7/31	Monitor (30%), Point Zone Protection (70%)	Type 3 Team Watsabaugh	84		3				1	(1) Water Tender Replacement Engine Crews	(3) Mining Camps Residential Structures (1) Radio Tower Public Use Cabins

For additional Incident information refer to the [AICC Web Site](#).

Alaska Fire and Fuels



For additional fuels information visit <https://akff.mesowest.org/>

The Coffee Brief will be posted at PLs 4 and 5 only.

