



## Coffee Brief

**Date: July 24, 2019**

### Yesterday's Weather Summary

Conditions will be hot and dry over much of the state today, with the hottest temps expected in the northeast Interior for the next few days. An easterly wave is moving into Copper River and South Central today, bringing wetting rains to many areas south of the eastern Alaska Range and into the western Alaska Range. Though this may be enough to dampen fire activity, it's still unlikely to be enough to wet down the deeper fuels, particularly in the valleys (mountains will get much more). Lightning activity will increase today, with the focus on the southern mainland as that easterly wave moves through, expanding northward on Wednesday.

In the longer range, model confidence is poor with weak features that may affect significant weather changes by small-scale movements; it now looks like cooler, damper conditions are expected for much of the state. The exception will be the Upper Yukon Zone, which will remain warmer and drier.

### Preparedness Levels & Alaska Fire Activity

Alaska	5
National	2

Light Initial Attack Activity New Fires and Acres: 12 Fires 197 acres
--

Alaska Fuel Status [Alaska Fire and Fuels Map](#)

**A [Fuels and Fire Behavior Advisory](#) remains in effect for Alaska.**

## Fuels/Fire Potential

FFMCs continue to increase for today and tomorrow, especially in the north, illustrating the likelihood of new lightning ignitions. Holdovers are still occurring from the last round of lightning, indicating fuels are extremely dry. In areas with such dry fuels, not much wind is needed to transition fire from the surface into the crowns.

DC is a measure of drying in the deeper duff layers. The Chalkyitsik Complex reports large stands of hardwoods burning quite readily. Validate on-ground conditions before assuming fuels will act “normally” as barriers.

## Resources

Aviation within Alaska	
Jumpship	7
Air Tactical	14
Air Tankers	7
Scoopers	12
Utility	12
T1 Helicopter	3
T2 Helicopter	25
T3 Helicopter	18

Crews Committed within Alaska		
Type 1	3	AK
Type 2	5	AK
Type 2IA	4	AK
Module	0	AK
Type 1	11	L-48
Type 2	5	L-48
Type 2IA	18	L-48
Module	12	L-48
<b>Total Crews</b>	<b>58</b>	

## Departing Crews

Jet #13 NR	Jet #12 NW	Jet #11 NOPS
MSO - ANC	RDM - FBK	RDD - FBK
MOB 7/10 -DMOB 7/25	MOB 7/10 -DMOB 7/26	MOB 7/8 -DMOB 7/30
Bitterroot IHC	Union IHC	Elk Mountain T2IA
Flathead IHC	Prineville IHC	Modoc T2IA
Grangeville Interagency T2IA	Mt Baker T2IA	Eldorado IHC
Kootenai T2IA	W/F Middle Fork T2IA	American River IHC
Lewis & Clark Regs T2IA	Bly RD Crew 2 T2IA	Mad River IHC

## Arriving Crews

Jet #19 NW
RDM - FBK
MOB 7/24 -DMOB
Redmond IHC
Winema IHC
Lakeview IHC
SRV #7
WIF McKenzie River

## Tactical Notes

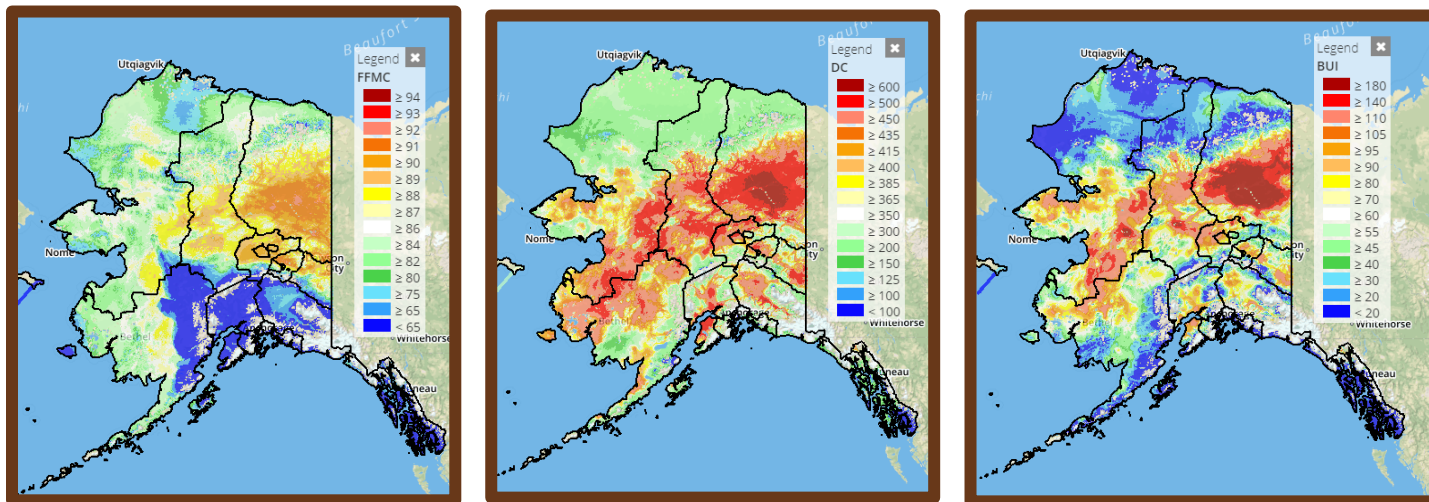
- Issued 11 new fires numbers (657-667)
- PC missions to 619, 616, 349
- 660 ordered jumpers, jumpers couldn't jump

Top 12 Alaska Priority Summary Based on Most Recent 209's																			
Priority	Unit	Seq. #	Incident	Descriptive Location	Size in Acres	48 hr. Change	% Contained/C completed	Expected Contain/Complete Date	Suppression Strategy	Complexity/IC	Total Personnel	Crews Assigned			Helicopters Assigned			Critical Needs	Threats
												T-1	T2	T2IA	T-1	T-2	T-3		
1	UYD	466	Chalkyitsik Complex		473,451.0					Type 2 Team Kurth/Sanford (t) Alaska	281	1	3	5	1	2	(1) T2IA or IHC		
1.1		407	Bearnose Hill	10 miles SE of Chalyitsik, AK	120,638.0	7,104.0	n/a	8/31	Point Zone Protection (100%)									Structures Native Allotments	
1.2		367	Frozen Calf	25 miles NE of Chalkyitsik	235,880.0	33,706.0	n/a	8/31	Point Zone Protection (100%)									Structures Native Allotments	
1.3		348	Tractor Trail 2	20 miles SW of Chalkyitsik, AK	85,134.0	6,186.0	n/a	8/31	Point Zone Protection (100%)									Structures Native Allotments	
1.4		424	Tettjajjik Creek	57 miles E of Chalkyitsik, AK	31,799.0	4,480.0	n/a	8/31	Point Zone Protection (100%)									Structures Native Allotments	
2	FAS	319	Shovel Creek	20 miles NW of Fairbanks	21,309.0	-	54	7/30	Full Suppression (100%)	Type 2 Team Northern Rockies Team 6, Fry	366		2	4		3	1	None	Private properties Residential Subdivisions
3	KKS	181	Swan Lake	5 miles NE of the community of Sterling	102,229.0	202.0	72	8/31	Confine (53%), Point Zone Protection (26%), Full Suppression (21%)	Type 2 Team Pisarek	306	1		4	1	1	1	None	Structures Infrastructure
4	TAD	485	Grouse Creek	9 mi NE of Rampart, AK	250,000.0	7,500.0	5	8/2	Point Zone Protection (100%)	Type 3 IC Long/Montoyo (t)	107	1	2	1			1	(1) HIS crews	Community of Rampart Native Allotments Structures
5	UYD	899	Cornucopia Complex		83,009.0					UYD Duty Officer	330	9	4	4				(1) Helicopter w/ PSD and Bucket	
5.1		337	Hadweenzic River	26 miles NE of Beaver	58,363.0	3,410.0	n/a	7/31	Point Zone Protection (100%)										Occupied structures and allotments Historical Structure
5.2		493	Tony Slough	8 miles NE of Beaver, AK	6,285.0	1,348.0	n/a	7/31	Point Zone Protection (100%)										Structures Native Allotments
5.3		572	East Fork Chandalar	25 miles N of Venetie	190.0	47.0	n/a		Point Zone Protection (100%)										Native Allotments
5.4		573	Pitka	45 miles NW of Beaver	1,260.0	715.0	n/a		Monitor (100%)										
5.5		594	Thazzik Mountain	25 miles NW of Venetie	2,740.0	2,440.0	n/a		Monitor (100%)										
5.6		601	Coal River	29 miles NW of Venetie	1,740.0	1,700.0	n/a		Monitor (100%)										
5.7		602	The Woodsman	31 miles NW of Venetie	0.1	-	n/a		Monitor (100%)										
5.8		621	Trail Creek	50 miles NW of Beaver	1,197.0	1,142.0	n/a		Monitor (100%)										
5.9		622	Sixty-One Mountain 1	38 miles N of Beaver	72.0	71.0	n/a		Monitor (100%)										
5.10	349	Chandalar River	5 miles SW of Venetie	11,162.0	162.0	n/a	7/31	Point Zone Protection (100%)	Native Allotments										

Top 12 Alaska Priority Summary Based on Most Recent 209's																				
Priority	Unit	Seq. #	Incident	Descriptive Location	Size in Acres	48 hr. Change	% Contained/C completed	Expected Contain/Complete Date	Suppression Strategy	Complexity/IC	Total Personnel	Crews Assigned			Helicopters Assigned			Critical Needs	Threats	
												T-1	T2	T2IA	T-1	T-2	T-3			
6	DAS	409	Rainbow 2	Rainbow Lake	18,000.0	3,000.0	n/a	12/31	Point Zone Protection (100%)	Type 3 Team Zumhofe/Grubbs (t)	63			2				(1) type 2 IA	Communities of Richardson Clear and South Bank	
7	SWS	534	Smith Creek	2 miles W of Donlin Mine	11,200.0	-	60	9/1	Point Zone Protection (100%)	Type 4 IC Kirkman	22	1						None	Structures Mining Infrastructure	
8	SWS	498	Kolmakof Hills	E of Suter Creek and West of Kalmakof River	9,573.0	-	95	9/1	Point Zone Protection (100%)	Type 5 IC Bledshield	25	1						None	Structures	
9	SWS	487	McCally Creek	1 mile S of Red Devil	3,097.0	286.5	70	9/1	Point Zone Protection (100%)	Type 4 IC Baumgartner/Spargo (t)	25	1						None	Village of Red Devil	
10	UYD	324	Hess Creek	29 miles SE of Steven's Village	173,467.0	-	n/a	7/31	Monitor (30%), Confine(10%), Point Zone Protection (60%)	Type 3 Team Watsabaugh	102	1	3				1	(3) Water Tender	(3) Mining Camps Residential Structures (1) Radio Tower Public Use Cabins	
11	FAS	508	Kobe	62 miles SW of Fairbanks, AK	896.0	(250.0)	50	7/27	Full Suppression (100%)	Type 3 IC Kendall	164	1	1	2				None	Structures	
12	CRS	606	Chetaslina	14 miles NE of Kenny Lake	2,125.0		0	8/30	Monitor (80%), Point Zone Portections (20%)	Type 3 IC	19						1	1	None	Sensitive sites

For additional Incident information refer to the [AICC Web Site](#).

## Alaska Fire and Fuels



For additional fuels information visit <https://akff.mesowest.org/>

---

The Coffee Brief will be posted at PLs 4 and 5 only.

