



## Coffee Brief

**Date: July 25, 2019**

### Weather Summary

One easterly wave has already moved through Copper River and South Central, bringing wetting rains to many areas south of the eastern Alaska Range and into the western Alaska Range. More such waves are on the way, and the one indicated on Thursday will start to bring more moisture north of the Alaska Range and into the southern Interior. Though this may be enough to seriously dampen fire activity, it's still unlikely to be enough to wet down the deeper fuels, particularly in the valleys (mountains will get much more). This will be particularly true north of the Alaska range, where precipitation is likely to be more spotty.

At the same time, a low in the Bering is pushing a large frontal system into the west coast. This will bring rain into coastal areas and eventually into the western Interior, likely tomorrow. With the convergence of moisture from east and west, it's likely there will be an area in the middle of the Interior that doesn't get as much rain. The Upper Yukon Zone will remain mainly dry through this event.

Lightning activity will increase today in the northeast corner of the state.

In the longer range, model confidence is poor with weak features that may affect significant weather changes by small-scale movements; but it now looks like cooler, damper conditions are expected for much of the state. The exception will be the Upper Yukon Zone, which will remain warmer and drier.

### Preparedness Levels & Alaska Fire Activity

Alaska	5
National	2

Light Initial Attack Activity New Fires and Acres: 10 Fires 238.3 acres
--

Alaska Fuel Status [Alaska Fire and Fuels Map](#)

**A Fuels and Fire Behavior Advisory has been issued for Alaska.**

**Fuels/Fire Potential**

FFMCs have moderated south of the Alaska Range, but are still holding at Very High to Extreme in the eastern Interior, supporting fire spread and new ignitions.

DC is still holding at Very High to Extreme across large areas of the state and is forecast to remain elevated despite significant forecast precipitation.

DMC will continue to drop in areas that receive significant moisture and/or are forecast to receive moisture.

**Resources**

<b>Aviation within Alaska</b>	
Jumpship	7
Air Tactical	14
Air Tankers	7
Scoopers	10
Utility	12
T1 Helicopter	2
T2 Helicopter	27
T3 Helicopter	18

<b>Crews Committed within Alaska</b>		
Type 1	3	AK
Type 2	6	AK
Type 2IA	4	AK
Module	0	AK
Type 1	13	L-48
Type 2	4	L-48
Type 2IA	17	L-48
Module	11	L-48
<b>Total Crews</b>	<b>58</b>	

**Departing Crews**

Jet #13 NR	Jet #12 NW	Jet #14 EA	Jet #11 NOPS
MSO - ANC	RDM - FBK	Commercial @ FAI	RDD - FBK
MOB 7/10 -DMOB 7/25	MOB 7/10 -DMOB 7/26	MOB 7/12 -DMOB 7/27	MOB 7/8 -DMOB 7/30
Bitterroot IHC	Union IHC	Midwin IHC	Elk Mountain T2IA
Flathead IHC	Prineville IHC	MOCC #1 - T2IA	Modoc T2IA
Grangeville Interagency T2IA	Mt Baker T2IA	MOCC #2 - T2IA	Eldorado IHC
Kootenai T2IA	W/F Middle Fork T2IA	Ohio State Crew - T2IA	American River IHC
Lewis & Clark Regs T2IA	Bly RD Crew 2 T2IA	NJS #1 - T2IA	Mad River IHC

**Tactical Notes**

- Fire 662 requested AA and FB but weather didn't allow

- Fire 671 received 1 load of jumpers, multiple loads of retardant
- Patrol flight turned into cabin protection which smoke prevented. Patrol flight resumed and success! Found fire 678 and jumped it.
- Fire 664 - Attempted to jump. 2 rounds got out. Not enough ceiling for squares. Back to MCG. 2 enterprising jumpers hitched a ride on the state Beaver and point-to pointed it to fire. Attempted one more time with squares. Still no go. Kicked out some supplies and recovered FBK with 4 sad jumpers.
- PC to fire 349
- Moved FB to GAL and 1TB to FBK

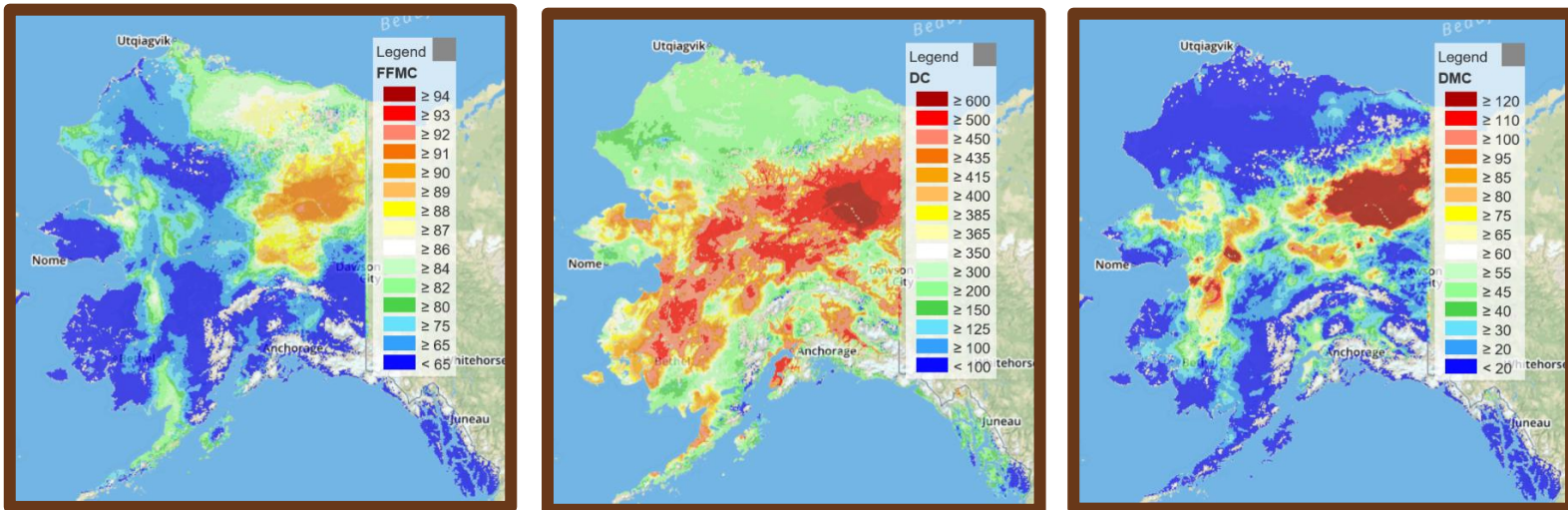
## Top 12 Prioritized Incidents

Top 12 Alaska Priority Summary Based on Most Recent 209's																			
Priority	Unit	Seq. #	Incident	Descriptive Location	Size in Acres	48 hr. Change	% Contained/Completed	Expected Contain/C complete Date	Suppression Strategy	Complexity/IC	Total Personnel	Crews Assigned			Helicopters Assigned			Critical Needs	Threats
												T-1	T2	T2IA	T-1	T-2	T-3		
1	UYD	466	Chalkyitsik Complex		482,953.0					Type 2 Team Alaska Green Team	333	2	3	6	1	2	None		
1.1		407	Bearnose Hill	10 miles SE of Chalyitsik, AK	120,638.0	-	n/a	8/31	Point Zone Protection (100%)									Structures Native Allotments	
1.2		367	Frozen Calf	25 miles NE of Chalkyitsik	235,880.0	-	n/a	8/31	Point Zone Protection (100%)									Structures Native Allotments	
1.3		348	Tractor Trail 2	20 miles SW of Chalkyitsik, AK	85,134.0	-	n/a	8/31	Point Zone Protection (100%)									Structures Native Allotments	
1.4		424	Tettjajik Creek	57 miles E of Chalkyitsik, AK	41,301.0	9,502.0	n/a	8/31	Point Zone Protection (100%)									Structures Native Allotments	
2	UYD	899	Cornucopia Complex		85,331.1					NIMO Day	272	6	3	3			None		
2.1		337	Hadweenzic River	26 miles NE of Beaver	59,009.0	646.0	n/a	7/31	Point Zone Protection (100%)									Occupied structures and allotments Historical Structure	
2.2		493	Tony Slough	8 miles NE of Beaver, AK	7,961.0	1,676.0	n/a	7/31	Point Zone Protection (100%)									Structures Native Allotments	
2.3		572	East Fork Chandalar	25 miles N of Venetie	190.0	-	n/a		Full Suppression (100%)									Native Allotments	
2.4		573	Pitka	45 miles NW of Beaver	1,260.0	-	90%		Monitor (100%)										
2.5		594	Thazzik Mountain	25 miles NW of Venetie	2,740.0	-	n/a		Monitor (100%)										
2.6		601	Coal River	29 miles NW of Venetie	1,740.0	-	n/a		Monitor (100%)										
2.7		602	The Woodsman	31 miles NW of Venetie	0.1	-	n/a		Monitor (100%)										
2.8		621	Trail Creek	50 miles NW of Beaver	1,197.0	-	n/a		Monitor (100%)										
2.9		622	Sixty-One Mountain 1	38 miles N of Beaver	72.0	-	n/a		Monitor (100%)										
2.10	349	Chandalar River	5 miles SW of Venetie	11,162.0	11,000.0	n/a	7/31	Point Zone Protection (100%)	Native Allotments										

Top 12 Alaska Priority Summary Based on Most Recent 209's																			
Priority	Unit	Seq. #	Incident	Descriptive Location	Size in Acres	48 hr. Change	% Contained/Completed	Expected Contain/C complete Date	Suppression Strategy	Complexity/IC	Total Personnel	Crews Assigned			Helicopters Assigned			Critical Needs	Threats
												T-1	T2	T2/A	T-1	T-2	T-3		
3	KKS	181	Swan Lake	5 miles NE of the community of Sterling	102,229.0	-	72	8/31	Confine (53%), Point Zone Protection (26%), Full Suppression (21%)	Type 2 Team Pisarek	234			2		1	1	None	Structures Infrastructure
4	TAD	485	Grouse Creek	9 mi NE of Rampart, AK	302,761.1	-	5	8/2	Point Zone Protection (100%)	Type 3 IC Long/Montoyo (t)	107	1	2	1			1	(1) Type 1 Crew	Community of Rampart Native Allotments Structures
5	FAS	319	Shovel Creek	20 miles NW of Fairbanks	21,309.0	-	54	7/30	Full Suppression (100%)	Type 3 Team	228		1	1		1	1	None	Private properties Residential Subdivisions
6	DAS	409	Rainbow 2	Rainbow Lake	18,050.0	-	n/a	12/31	Point Zone Protection (100%)	Type 3 Team Zumhofe/Grubbs (t)	63			2				None	Communities of Richardson Clear and South Bank
7	SWS	534	Smith Creek	2 miles W of Donlin Mine	53,107.7	-	80	9/1	Point Zone Protection (100%)	Type 4 IC Kirkman	22	1						None	Structures Mining Infrastructure
8	SWS	498	Kolmakof Hills	E of Suter Creek and West of Kalmakof River	9,573.0	-	95	9/1	Point Zone Protection (100%)	Type 5 IC Biedshield	25	1						None	Structures
9	SWS	487	McCally Creek	1 mile S of Red Devil	3,097.9	-	70	9/1	Point Zone Protection (100%)	Type 4 IC Baumgartner/Spargo (t)	25	1						None	Village of Red Devil
10	UYD	324	Hess Creek	29 miles SE of Steven's Village	173,467.0	-	n/a	7/31	Monitor (30%), Confine(10%), Point Zone Protection (60%)	Type 3 Team Watsabaugh	103	1	3				1	(1) Type 3 Water Tender	(3) Mining Camps Residential Structures (1) Radio Tower Public Use Cabins
11	FAS	508	Kobe	62 miles SW of Fairbanks, AK	896.0	-	80	7/27	Full Suppression (100%)	Type 3 IC Kendall	164	1	1	2				None	Structures
12.1	CRS	606	Chetaslina	14 miles NE of Kenny Lake	2,125.0	-	0	8/30	Monitor (80%), Point Zone Protection (20%)	Type 3 IC James	19					1	1	None	Sensitive sites
12.2	CRS	484	Long							No 209									

For additional Incident information refer to the [AICC Web Site](#).

## Alaska Fire and Fuels



For additional fuels information visit <https://akff.mesowest.org/>

The Coffee Brief will be posted at PLs 4 and 5 only.

