



Coffee Brief

Date: July 26, 2019

Yesterday's Weather Summary

A weather front approaching Alaska's west coast from the Bering Sea will bring rain and gusty southerly winds to Alaska's west coast today. The weather front will advance eastward very slowly before it dissolves over the western Interior on Friday and Saturday.

A low pressure system over the Gulf of Alaska will bring rain to the southeast panhandle for the next couple of days. A lobe of energy associated with this low will also rotate into the southeastern Interior today, bringing a chance of rain.

Further north, widely scattered wet thunderstorms will occur again today in the northeastern Interior and along the eastern Brooks Range. While the atmosphere is moist enough to ensure that the majority of these thunderstorms will be wet, the fuels in the Upper Yukon Valley are very dry, so some new fire starts and increased initial attack are possible. Thunderstorms will pop up over this region again on Friday and Saturday.

In the longer term, the weather pattern is progressive, with a given weather feature only affecting the area for a couple of days before being replaced with the next feature. High pressure and associated warming and drying are possible Sunday and Monday over mainland Alaska, followed by cooler and wetter weather by mid-week as southwesterly flow off the Bering Sea develops.

Preparedness Levels & Alaska Fire Activity

Alaska	4
National	2

Light Initial Attack Activity New Fires and Acres: 6 Fires 15 acres
--

A **[Fuels and Fire Behavior Advisory](#)** remains in effect for Alaska.

Fuels/Fire Potential

The Fine Fuel Moisture Content (FFMC) values have dropped in many areas but are still holding at high to very high in parts of the Interior. Rain has been spotty.

Values of the Buildup Index (BUI) are very high to extreme even in areas that received rain. More rain is needed to significantly drop BUI below burnable levels.

The spruce adjective rating highlights the continued fire spread potential in the Upper Yukon Valley. The rest of the state has moderated over the last couple of days.

Resources

Aviation within Alaska	
Jumpship	6
Air Tactical	13
Air Tankers	6
Scoopers	10
Utility	12
T1 Helicopter	2
T2 Helicopter	26
T3 Helicopter	17

Crews Committed within Alaska		
Type 1	3	AK
Type 2	8	AK
Type 2IA	3	AK
Module	1	AK
Type 1	12	L-48
Type 2	3	L-48
Type 2IA	15	L-48
Module	11	L-48
Total Crews	56	

Departing Crews

Jet #12 NW	Jet #14 EA	Jet #15 SOPS	Jet #11 NOPS
RDM - FBK	Commercial @ FAI	??? - ANC	RDD - FBK
MOB 7/10 -DMOB 7/26	MOB 7/12 -DMOB 7/27	MOB 7/12 -DMOB 7/28	MOB 7/8 -DMOB 7/30
Union IHC	Midewin IHC	Bear Divide IHC	Elk Mountain T2IA
Prineville IHC	MOCC #1 - T2IA	Dalton IHC	Modoc T2IA
Mt Baker T2IA	MOCC #2 - T2IA	Inyo IHC	Eldorado IHC
W/F Middle Fork T2IA	Ohio State Crew - T2IA	Breckenridge IHC	American River IHC
Bly RD Crew 2 T2IA	NJS #1 - T2IA	Vista Grande IHC	Mad River IHC

Arriving Crews

Jet #20 EA
??? - FBK
MOB 7/27 -DMOB
MOCC #3 - T2IA
IIC #1 - T2IA
WIC #1 - T2IA

Tactical Notes

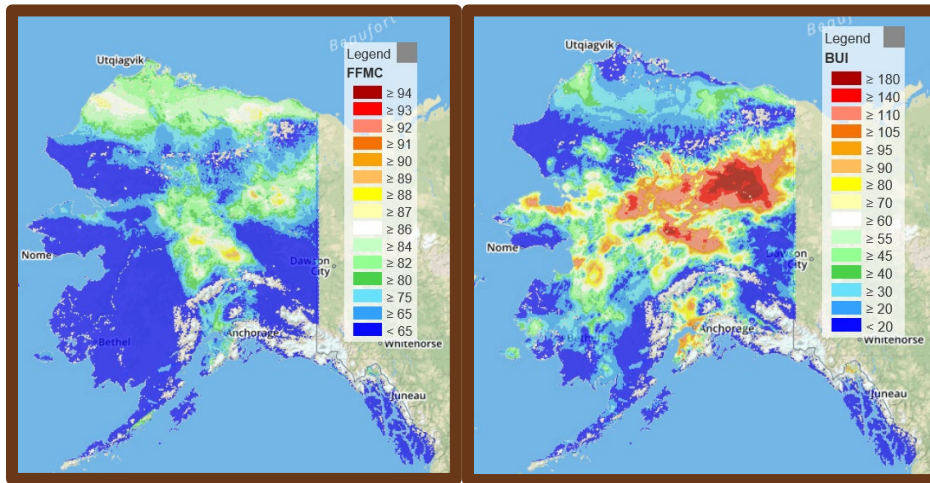
- Issued 6 new fire numbers
- 8 SMJ's on 681 and 8 SMJ's on 682
- FB-241/243 return to FBK detoured to FYU due to weather
- 682 received PC and aerial support

Top 12 Alaska Priority Summary Based on Most Recent 209's																									
Priority	Unit	Seq. #	Incident	Descriptive Location	Size in Acres	48 hr. Change	% Contained/C completed	Expected Contain/Complete Date	Suppression Strategy	Complexity/IC	Total Personnel	Crews Assigned			Helicopters Assigned			Critical Needs	Threats						
												T-1	T2	T2IA	T-1	T-2	T-3								
1	UYD	466	Chalkyitsik Complex		492,087.0					Type 2 Team Norm McDonald	352	2	4	6	1	2	(1) T2 Heli or (1) T3 Heli								
1.1		407	Bearnose Hill	10 miles SE of Chalyitsik, AK	127,569.0	6,931.0	n/a	8/31	Point Zone Protection (100%)									Structures Native Allotments							
1.2		367	Frozen Calf	25 miles NE of Chalkyitsik	233,052.0	-	n/a	8/31	Point Zone Protection (100%)									Structures Native Allotments							
1.3		348	Tractor Trail 2	20 miles SW of Chalkyitsik, AK	90,165.0	5,031.0	n/a	8/31	Point Zone Protection (100%)									Structures Native Allotments							
1.4		424	Tettjajjik Creek	57 miles E of Chalkyitsik, AK	41,301.0	9,502.0	n/a	8/31	Point Zone Protection (100%)									Structures Native Allotments							
2	UYD	899	Cornucopia Complex		89,267.0					NIMO	391	4	13	4			(4) IHC or (4) T2 Crews								
2.1		337	Hadweenzic River	26 miles NE of Beaver	60,856.0	2,493.0	n/a	8/31	Point Zone Protection (100%)									Multiple allotments							
2.2		493	Tony Slough	8 miles NE of Beaver, AK	7,961.0	1,676.0	n/a	8/31	Point Zone Protection (100%)									Structures Native Allotments							
2.3		572	East Fork Chandalar	25 miles N of Venetie	190.0	-	90	8/31	Point Zone Protection (100%)									Native Allotments							
2.4		573	Pitka	45 miles NW of Beaver	1,260.0	-	n/a	8/31	Monitor (100%)																
2.5		594	Thazzik Mountain	25 miles NW of Venetie	3,333.0	593.0	n/a	8/31	Monitor (100%)																
2.6		601	Coal River	29 miles NW of Venetie	2,301.0	561.0	n/a	8/31	Monitor (100%)																
2.7		602	The Woodsman	31 miles NW of Venetie	0.1	-	n/a	8/31	Monitor (100%)																
2.8		621	Trail Creek	50 miles NW of Beaver	2,132.0	935.0	n/a	8/31	Monitor (100%)																
3.9		622	Sixty-One Mountain 1	38 miles N of Beaver	72.0	-	n/a	8/31	Monitor (100%)																
2.10	349	Chandalar River	5 miles SW of Venetie	11,162.0	-	n/a	8/31	Point Zone Protection (100%)	Native Allotments community of Venetie																
3	TAD	485	Grouse Creek	9 mi NE of Rampart, AK	30,276.0	5,000.0	5	8/2	Point Zone Protection (100%)	Type 3 IC Long/Montoyo (t)	107	1	2	1		1	(1) HIS crews, (2) T6 Engines	Community of Rampart Native Allotments Structures							

Top 12 Alaska Priority Summary Based on Most Recent 209's																			
Priority	Unit	Seq. #	Incident	Descriptive Location	Size in Acres	48 hr. Change	% Contained/Completed	Expected Contain/Complete Date	Suppression Strategy	Complexity/IC	Total Personnel	Crews Assigned			Helicopters Assigned			Critical Needs	Threats
												T-1	T2	T2IA	T-1	T-2	T-3		
4	KKS	181	Swan Lake	5 miles NE of the community of Sterling	102,229.0	-	72	8/31	Confine (53%), Point Zone Protection (26%), Full Suppression (21%)	Type 2 Team Pisarek	213			2		1	1	None	Structures Infrastructure
5	FAS	319	Shovel Creek	20 miles NW of Fairbanks	21,309.0	-	55	7/30	Full Suppression (100%)	Type 3 IC Babender, Joe Krock, Thomas t	228		1	1		1	1	None	Private properties Residential Subdivisions
6	DAS	409	Rainbow 2	Rainbow Lake	18,750.0	750.0	n/a	12/31	Point Zone Protection (100%)	Type 3 Team Zhaper, Chris D'antonio	67			2				(1) type 21A	Communities of Richardson Clear and South Bank
7	SWS	534	Smith Creek	2 miles W of Donlin Mine	53,107.0	-	80	9/1	Point Zone Protection (100%)	Type 4 IC Cook	22	1						None	Structures Mining Infrastructure
8	SWS	498	Kolmakof Hills	E of Suter Creek and West of Kalmakof River	9,573.0	-	100	9/1	Point Zone Protection (100%)	Type 5 IC Biedshield	25	1						None	Minimal threa to structures
9	SWS	487	McCally Creek	1 mile S of Red Devil	3,097.0	-	75	9/1	Point Zone Protection (100%)	Type 4 IC Baumgartner/Spargo (t)	22	1						None	Village of Red Devil
10	UYD	324	Hess Creek	29 miles SE of Steven's Village	185,185.0	11,721.0	n/a	7/31	Monitor (30%), Confine(10%), Point Zone Protection (60%)	Type 3 Team Watsabaugh	103	1	3				1	(1) T3 Water Tender	Mining Camps Residential Structures Radio Tower Public Use Cabins
11	FAS	508	Kobe	62 miles SW of Fairbanks, AK	896.0	-	90	7/27	Full Suppression (100%)	Type 3 IC Cowie	95		1	2				None	Structures
12	CRS	606	Chetaslina	14 miles NE of Kenny Lake	2,125.0		0	8/30	Monitor (80%), Point Zone Portections (20%)	Type 3 IC	19					1	1	None	Sensitive sites

For additional Incident information refer to the [AICC Web Site](#).

Alaska Fire and Fuels



For additional fuels information visit <https://akff.mesowest.org/>

The Coffee Brief will be posted at PLs 4 and 5 only.

