



| Alaska Priority Summary Based on Most Recent 209's | | | | | | | | | | | | | | | | | | | |
|---|------|--------|----------------|--|---------------|---------------|-----------------------|----------------------------------|--|-----------------------------------|-----------------|----------------|----|------|----------------------|-----|-----|---|--|
| Priority | Unit | Seq. # | Incident | Descriptive Location | Size in Acres | 24 hr. Change | % Contained/Completed | Expected Contain/C complete Date | Suppression Strategy | Complexity/IC | Total Personnel | Crews Assigned | | | Helicopters Assigned | | | Critical Needs (12 hrs) | Threats (24/48 hrs) |
| | | | | | | | | | | | | T-1 | T2 | T2IA | T-1 | T-2 | T-3 | | |
| <i>New and emerging initial attack within Alaska is #1</i> | | | | | | | | | | | | | | | | | | | |
| 1 | FAS | 319 | Shovel Creek | 20 miles NW of Fairbanks | 12,053.0 | 322.0 | 15 | 7/30 | Full Suppression (100%) | Type 1 Team Allen, PNW Team 2 | 776 | 9 | 4 | 7 | 2 | 3 | 2 | (3) HC1 (3) ENG6 (1) TFLD | Private properties Residential Subdivisions |
| 2 | KKS | 181 | Swan Lake | 5 miles NE of the community of Sterling | 99,086.0 | 2,197.0 | 69 | 8/31 | Confine (36%), Point Zone Protection (40%), Full Suppression (24%) | Type 2 Team Gales, NWIMT 13 | 406 | 1 | 1 | 7 | 2 | 2 | 2 | None | Smoke Impact along highway |
| 3 | MSS | 429 | Montana Creek | 3 miles E of HWY 4 and 13 miles S of Talkeetna, AK | 367.0 | - | 30 | 7/16 | Full Suppression (100%) | Type 3 Team Brentwood Reid | 31 | | | 1 | | 1 | | | Structures |
| 4 | MSS | 451 | Malaspina | 13 miles S of Talkeetna, AK | 85.0 | 25.0 | 0 | 7/13 | Full Suppression (100%) | Type 3 Team Thompson/Johnson(t) | 102 | | 1 | 2 | | | | (2) T1 Crews (2) T2IA Crews (2) T2 Crews Vehicles | Structures Infrastructure |
| 5 | TAS | 362 | Boundary River | 8 miles SW of Northway | 14,888.0 | -462 | 0 | 7/25 | Full Suppression (100%) | Type 3 IC Jones/Miller (t) | 168 | | 1 | 4 | | 2 | 1 | (1) Scooper Aircraft (2) T2IA Crews (1) T3 Helicopter | Residences/cabin Native Allotments Village of Northway Infrastructure |
| 6 | TAS | 133 | McArthur Creek | 25 miles NE of Northway | 15,000.0 | -7000 | 0 | 7/15 | Point Zone Protection (100%) | Type (4) Bennett | 8 | | | | | | | | 20 structures Mining equipment |
| 7 | UYD | 407 | Bearnose Hill | 10 miles SE of Chalyitsik, AK | 21,272.0 | - | n/a | n/a | Point Zone Protection (100%) | Type 4 IC Ryker | 79 | 2 | 1 | 1 | | | | None | Numerous Structures and allotments |
| 8 | UYD | 367 | Frozen Calf | 25 miles NE of Chalkyitsik | 110,000.0 | 77,746.0 | n/a | n/a | Monitor (100%) | UYD Duty Officer | 30 | | | | | | | None | None |
| 9 | DAS | 409 | Rainbow 2 | Rainbow Lake | 220.0 | - | n/a | n/a | Point Zone Protection (100%) | Goyette | 1 | | | | | | | None | None |
| 10 | UYD | 324 | Hess Creek | 29 miles SE of Steven's Village | 172,548.0 | 27,277.0 | n/a | n/a | Monitor (30%), Point Zone Protection (70%) | Type 3 Team Thaler/Geissinger (t) | 90 | | | | | | | None | (3) Mining Camps Residential Structures (1) Radio Tower |

Asaka Priority Summary Based on Most Recent 209's

| Priority | Unit | Seq. # | Incident | Descriptive Location | Size in Acres | 24 hr. Change | % Contained/Completed | Expected Contain/C complete Date | Suppression Strategy | Complexity/IC | Total Personnel | Crews Assigned | | | Helicopters Assigned | | | Critical Needs (12 hrs) | Threats (24/48 hrs) |
|---|------|--------|-------------------|---------------------------------|---------------|---------------|-----------------------|----------------------------------|------------------------------|--------------------------------|-----------------|----------------|----|------|----------------------|-----|-----|-------------------------|--|
| | | | | | | | | | | | | T-1 | T2 | T2IA | T-1 | T-2 | T-3 | | |
| <i>New and emerging initial attack within Alaska is #1</i> | | | | | | | | | | | | | | | | | | | |
| 11 | TAD | 361 | Lloyd Mountain | 20 miles SE of Lloyd Mountain | 16,239.0 | - | n/a | n/a | Point Zone Protection (100%) | Type 4 IC Cochran | 20 | | 1 | | | | | None | Structures |
| 12 | UYD | 349 | Chandalar River | 5 miles SW of Venetie | 4,592.0 | - | n/a | n/a | Point Zone Protection (100%) | Type 4 IC Kehoe | 56 | 2 | | | | | | None | Native Allotments withihn 2-3 miles |
| 13 | MID | 391 | NINETYEIGHT CREEK | 18 miles NE of Harding Lake | 69.0 | - | 60 | 7/31 | Full Suppression (100%) | Type 3 Team Cox | 125 | | 3 | 2 | | 3 | | Qualified Shooter | Native Allotments Structures |
| 14 | UYD | 337 | Hadweenzic River | 26 miles NE of Beaver | 30,538.0 | - | n/a | n/a | Point Zone Protection (100%) | Type 3 IC Harding/Weakland (t) | 10 | | | | | | | None | Multiple occupied structures and allotments Historical Structure |
| 15 | UYD | 262 | Black River | 53 miles NE of Circle, AK | 32,659.0 | 3,768.0 | n/a | n/a | Point Zone Protection (100%) | Type 4 IC Schroeder | | | | | | | | None | Allotments Cabins |
| 16 | TAD | 312 | Bergman Creek | 28 miles SW of Allakaket, AK | 10,899.0 | - | n/a | n/a | Point Zone Protection (100%) | Type 4 IC Norscog | 24 | | | | | | 1 | None | Allotment |
| 17 | TAD | 389 | Foraker | 22 miles SE of Kantishna | 11,970.0 | - | n/a | n/a | Point Zone Protection (100%) | Type 4 IC Greenstein | 6 | | | | | | 1 | None | Structures |
| 18 | UYD | 217 | Yukon Charley | 53 miles northwest of Eagle, Ak | 1,049.2 | - | n/a | n/a | Monitor (100%) | UYD Duty Officer | | | | | | | | None | None |

Coffee Brief

Date: July 9, 2019

Weather Summary

High pressure over Southwest Alaska is sliding northward, expanding the hot and dry weather in the south up to west and northwest Alaska. Temperatures are on the rise throughout the Interior and western Alaska for the next few days. 90s are expected to continue in the south and southwest, and mid and upper 80s in the north throughout the mid-week. Relative humidity will approach the low 20s with some teens mixed in at more inland stations in the next few days. All-time high temperature records continue to fall in the west, and the heat wave is not over. Some moderation is expected, though temperatures will still be above normal.

The area of convection will begin to focus more on Southwest Alaska over the next few days. Short waves moving down from the north may help to spur a bit of activity in eastern Alaska over this same period.

At this time, it looks like the center of the high moves to the Seward Peninsula, then off the northwest coast and stretches apart, which will keep hot and dry weather for most of the state through Wednesday, followed by quite warm and mostly dry into the weekend as the ridge slides off and starts to break down. As the ridge slides off on Wednesday, expect stronger convection and a lot more lightning across the southern 2/3 of the state. Despite this, there are no significant wetting rains on the horizon; even the CPC 2-wk forecasts show no relief.

Preparedness Levels & Alaska Fire Activity

| | |
|----------|---|
| Alaska | 5 |
| National | 2 |

| |
|---|
| Light Initial Attack Activity New Fires and Acres: 7 fires 711.4 acres |
|---|

Alaska Fuel Status [Alaska Fire and Fuels Map](#)

A [Fuels and Fire Behavior Advisory](#) has been issued for Alaska.

Fuels/Fire Potential

All indices are highlighting South Central, Copper River Basin, Upper Yukon, and west of the Alaska Range with Extreme values. This will support significant growth where active fires exist. FWI shows that the SW Interior from Lake Minchumina to Bethel has potential for dramatic growth and fire behavior in both tundra and boreal fuels.

FFMC is peaking across the state. Ignition potential is limited only by potential sources. Lightning will produce starts. BUI highlights some differences among areas on the landscape. Expect the most significant spread with driest duff layers, notably different in damper areas, with a notable differentiation in the hardwoods.

Local winds continue to push fires, despite what is reflected in station observations and even spot forecasts. Hot sun, dark spruce, drainage orientation, and slope direction are all factors.

Resources

| Aviation within Alaska | |
|------------------------|----|
| Jumpship | 7 |
| Air Tactical | 15 |
| Air Tankers | 7 |
| Scoopers | 12 |
| Utility | 10 |
| T1 Helicopter | 9 |
| T2 Helicopter | 26 |
| T3 Helicopter | 17 |

| Crews Committed within Alaska | | | |
|-------------------------------|-----------|-----------|------|
| Type 1 | Committed | 2 | AK |
| Type 2IA | Committed | 3 | AK |
| Type 2 | Committed | 9 | AK |
| Type 1 | Committed | 10 | L-48 |
| Type 2IA | Committed | 20 | L-48 |
| Type 2 | Committed | 6 | L-48 |
| Total Crews | | 50 | |

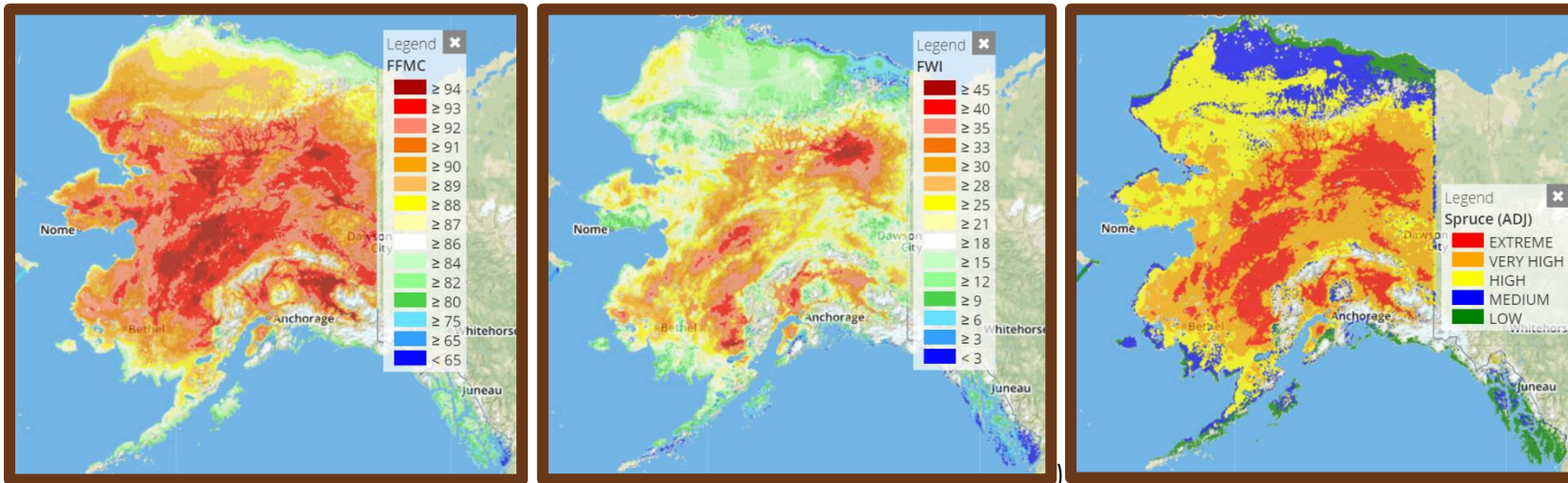
- Jetload of crews departing today, with another load arriving tomorrow
- Two additional Type 1 Helicopters ordered and available
- One additional jumpship ordered
- One additional UAS module with PSD/IR ordered
- One additional order for ATGS ordered

Current Incident Details

- Jumped 1 load out of FBK on 367
- Jumped 1 load out of MCG on 457 by ILL. Ran CL215 and BD from PAQ on it for 1.5 fuel cycles. As well as received one round of retardant from 3 heavies out of PAQ.
- Jumped 1 load out of FBK on 459. Used ASM B-63 and 2 FB as well. Visibility dropped while FB were out so had to land ENN and RON there.
- J07 went to DLG after dropping and demobed 447 load back to MCG. Currently only 6 - person load at MCG.
- Tried retardant operations on 319 but cut short after visibility dropped.
- Prepositioned 4 FB and 1 AA to GAL due to smoke concerns.
- 461 in CRA - requested retardant, 2 loads jumpers, and scoopers. Nothing viable from FBK due to visibility. Rolled PAQ tankers plus GAL load. Tankers dropped but had to stop due to reduced visibility. Jumpers able to jump. Went to GKN for fuel at 2306. FBK was still at 1/4 mile so RON`ed at GKN.

For additional Incident information refer to the [AICC Web Site](#).

Alaska Fire and Fuels



For additional fuels information visit <https://akff.mesowest.org/>

The Coffee Brief will be posted at PLs 4 and 5 only.

