



Coffee Brief

Date: July 12, 2022

Preparedness Levels & Alaska Fire Activity

Alaska	5
National	3

Light Initial Attack Activity New Fires and Acres: 11 fires for 340 acres
--

There are currently 15 staffed fires and 6 Complexes. Yesterday's large fire growth was ~81,901 acres

#359(TAD): 1 load SMKJs for structure protection

#523(TAD): 1 load SMKJs for structure protection

#535(TAD): AA-1MZ, AA-0AX, ASM-B61, S-260/262/284, FB-211/214/216/217 all responded to this incident.

#552(GAD): 1 load SMKJs and AA-1BR responded. Dropped 8 jumpers on this fire - GAL/J-90 then deployed the other 4 jumpers on the ship on fire #559

#553(KKS): AA-0AK flew this fire.

#556(TAD): 1 load SMKJs, ASM-B7, T-101, T-162, T-52

Poorman Complex: AA-1BR, T-544 and T-162 responded for Wx station protection.

Sources: National and AICC Situation Report, AICC Aircraft Logs

Prioritized Incident Details

Priority	Unit	Seq. #	Incident	Descriptive Location	Size in Acres	Yesterday's Acres	Change Since Last 209	% Contained/Completed	Expected Contain/Complete Date	Suppression Strategy	Complexity (Incident Management Organization)	IC	Total Personnel	Crews Assigned			Helicopters Assigned		
														T-1	T2	T2IA	T-1	T-2	T-3
2	AKFAS	346	Clear	10 NM from City of Anderson along the Teklanika River	70,593.0	65,884.0	4,709.0	18%	7/30	Point Zone	Type 2 Team	Al Lawson - IC Nathan Rabe - Deputy IC	553	7	2	5	1	2	1
3	AKFAS	349	Minto Lakes	Minto Lakes/Chatanika River	37,523.0	35,367.0	2,156.0	0%	7/30	Point Zone	Type 1 Team	Jerry McGowan IC, Ken Kempler Deputy IC	291	1	4	1		1	1
4	AKTAD	898	Bean Complex	West of Fairbanks, some fires up to 130 miles.	178,109.0	155,302.0	22,807.0	0%	10/1	Various	Type 2 Team	Nathan LeFevre, ICT2 Eric Knerr, DPIC Chris Orr, ICT2-1	226	2	1	1		1	1
5	AKDAS	894	Middle Tanana Complex	Nearest community is Delta, Alaska	57,934.3	30,526.3	27,408.0	0%	10/31	Various	Type 2 Team	Almas, Northern Rockies Team 3	167	4	4			2	2
6	AKSWS	899	Lime Complex	Sleetmute to King Salmon, Napalmute to Port Alsworth	857,272.0	785,539.0	71,733.0	38%	8/1	Various	Type 2 Team	IC Butteri	157					3	2
7	AKGAD	897	Poorman Complex	Ruby, AK is the closest civilization.	101,240.0	55,504.0	45,736.0	0%	8/1	Various	Type 3 Team	Mitch Ketron ICT3	96	2					1
8	AKTAD	893	Paradise Complex	6 miles southwest of Lake Minchumina, AK	250,877.0	237,989.2	12,887.8	0%	9/1	Various	Type 3 IC	D. Jones, E Karp(f)	74	2	1				2
9	AKTAD	896	Dalton Highway Complex	0.5-5 miles off the Dalton Highway & East of Rampart AK	84,364.0	75,722.0	8,642.0	0%	8/31	Point Zone	Type 3 Team	McCowan GB Idaho Team 1	91		1			1	1
10	AKTAD	431	Slathtouka	19 miles southwest of Allakaket, AK.	8,000.0	2,564.4	5,435.6	1%	9/30	Point Zone	Type 3 Team	Andrew Stenbeck / Clint Desautel (f)	61	1	1				
11	AKFAS	499	Little Chena River	Little Chena River / Fish Creek	125.0	33.8	91.2	5%	7/24	Point Zone	Type 3 IC	Prax, E	108	6	2				
12	AKTAD	525	Minnkohwin	19 miles southeast of Allakaket, AK	1,516.0		1,516.0	0%	10/1	Monitor	Type 5 IC	Tanana Zone Duty Officer	0						

Source: AMAC Incident Prioritization List, ICS-209s

Resources

Aviation within Alaska	Total
Smokeumper	6
Air Tactical	13
Air Tankers	5
Scoopers	26
Utility	8
Helicopter, Type 1	2
Helicopter, Type 2	20
Helicopter, Type 3 Standard	12
UAS	4
Total Aircraft	96

Crews Committed within Alaska	Total
Type2IA	20
Type 1	22
Type 2	9
Type 1 Module	7
Type 2 Module	8
Total Crews	66

Incident Mangement Teams in Alaska	Total
CIMT	
IMT 1	2
IMT2	5
IMT3	4
Total IMTs	11

AVIATION

S-281/282/284 still holding for wx in JNU
Sherpa inbound tomorrow (J-62)
B4 off today

AIRSPACE/TFRs

2/7355 Minto Lakes
2/6808 Lime complex
2/8031 Clear
2/9217 Little Chena River
2/7505 Gold Hub

SMOKEJUMPERS

Anticipated smokejumpers available: 12
~ 85 SMKJ's committed + 1 as single resource (DIVS #444)

Smokejumper Demobilizations

Yesterday: UYD: 431 (4); 521 (4); 509(2); 530(4); Bean(2); 327(1)
Planned for today:

CREWS

Gannet Gannett mobilizing to MCG/Chena demobilizing from MHM using J-07, J-09, and 1EB

Midnight Suns back on base. Admin 11th and two days off 12-13th, back i/s 7/14

North Stars back on base, availability Unknown

NICC JET MOVEMENT

7/13 - Jet #10 Arriving

TBD
Support?

OVERHEAD/TEAMS

- 36 pending overhead requests
- Anticipating replacement IMT orders for TAD Zone fires 2-T3 and 1-T2

- The prepositioned NW IMT2 is assigned to the Lime Complex. In brief will be 10 a.m. on today – transfer of command 7/14

Source: IROC Reports, [National Smokejumper Status Report](#), AK Incident Aircraft Tracking Spreadsheet & AICC Documentation

Weather Summary

A series of easterly waves coming off the low in the Gulf of Alaska are working more moisture into the eastern corner of the state, including the Panhandle, Copper River Basin, and the upper and middle Tanana Valley. The amount of rain with these waves is questionable, but models indicate that several days of these events will bring sufficient precipitation to those areas to moderate fire activity there. Some of this moisture will also work into South Central and Southwest, though most of that rain is expected along coastal areas.

By today, a significant pattern change is afoot, and more short waves will begin moving across the state from west to east, ushering in cooler and damper weather for most of the state. This westerly flow will bring ever-wetter waves of precipitation, perhaps providing a longer-term reprieve to the fire season.

Source: Alaska 7-Day Outlook

Fuels/Fire Potential

FFMC values in the eastern Interior have taken some moisture, with more in the forecast for the next few days. This is creating a mosaic of fuel dryness on the landscape, and indicates a reduction in fire spread potential in eastern Alaska. In the central and western Interior, FFMCs indicate high spread potential, assuming good ventilation and relatively smoke-free skies.

Subsurface drying is the main driver of fire spread. The Buildup Index (BUI) is a combination of Duff Moisture Code (DMC) and Drought Code (DC), which describe the mid and deep layers of duff. During this portion of the fire season, fires can now be carried by the deepest fuel layers. Several days of rains may not be enough to stop fire activity as fires will continue to burn underground. Deeper burning fires challenge containment and control efforts, and also create holdover lightning ignitions that are discovered days later. Current BUI values are at or near record values for much of the Interior and South Central. Even though the forecast is for increasing precipitation across a wide portion of the landscape this week, it will take more than an inch of rain over several days to significantly alter this fire season.

When encountering a mismatch between a point value based on actual weather observations and the background grid, please discount the grid and go with the points.

Source: Alaska 7-Day Outlook

Fuels Status [Alaska Fire and Fuels Map](#)

[A Fuels and Fire Behavior Advisory was Issued 7/8/2022](#)

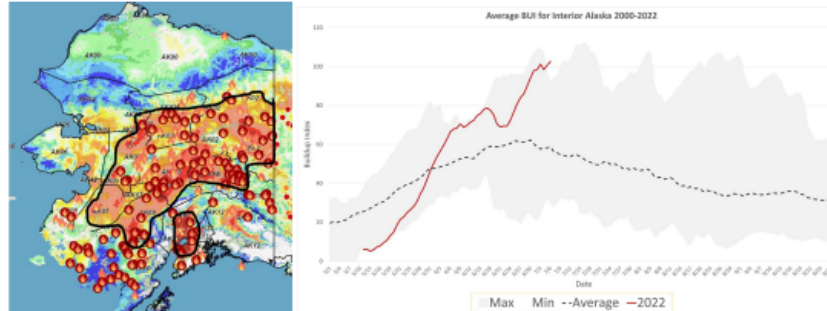
Fuels and Fire Behavior Advisory Interior and South Central Alaska

Valid: July 8 – July 22, 2022

Subject: Exceptional landscape flammability and widespread large fire growth.

Discussion: The Buildup Index (BUI) is the best indicator of seasonal severity and overall flammability of fuels in Alaska. It represents deeper drying in the duff layers and greater fuel availability. Large fire growth occurs from mid-June to mid-July surrounding the summer solstice when long days and rapid drying can produce elevated BUIs. Southwest Alaska experienced an exceptionally busy June with over one million acres burned. By mid-June fire activity began to spread eastward across the Interior. Numerous fires are now burning in the central and eastern Interior. South Central has been drying rapidly and BUIs are now at record levels.

Difference from normal conditions: The attached graph shows the current 2022 BUI trend for the Interior of Alaska compared to climatological norms since 2000. 2022 has been above average BUI since May 31 and is currently at record-setting values. Convective precipitation has moderated BUI values in some areas, but mid and deeper sub-surface fuels remain extremely dry. Much of the landscape has experienced continuous large fire growth. Fuels that are normally barriers to fire spread, such as old fire scars and hardwood stands, have been experiencing increased fire behavior. Multiple days of wetting rain adding up to more than one inch will be needed.



Concerns to Firefighters and the Public:

- Spruce stands are extremely flammable, will ignite readily, exhibit rates of spread more than one mile per hour, torch, and spot prolifically up to ¼ mile or more, and exhibit intense crown fire behavior.
- Temperatures above 75 degrees and RH below 30% are important thresholds for rapid spread and crown fire behavior. Strong winds are not required for large fire growth.
- Long-term drying has stressed green fuels and is encouraging spread in old burn scars and less flammable hardwood forests. These fuel types are no longer barriers to fire spread.

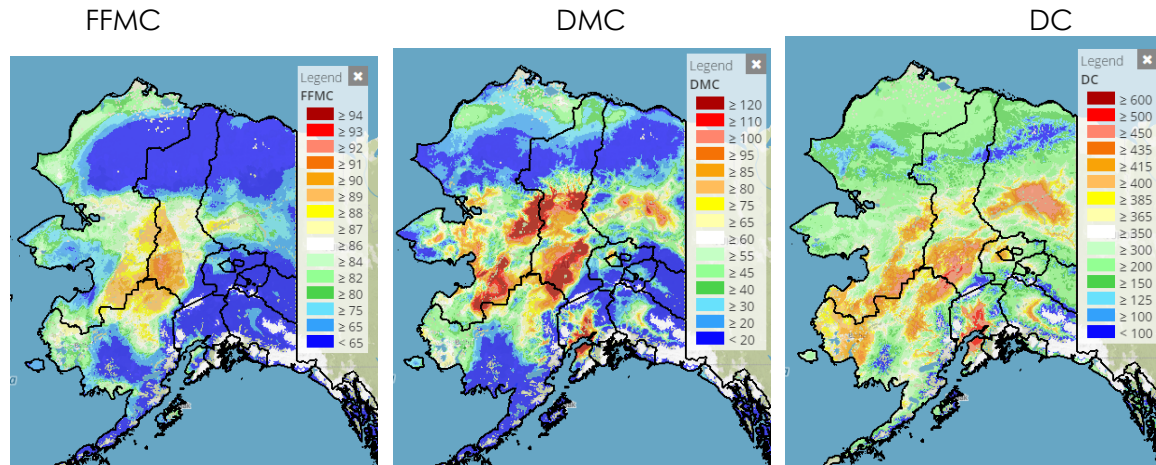
Mitigation Measures:

- Ensure that you can recognize hazardous fuel types.
- Understand the triggers and thresholds for problem fire behavior.
- Monitor forecasts and indices to anticipate areas of increased flammability and extreme fire behavior.
- Maintain clear communications when working around active fires.

Area of Concern: Southwest, Central and Eastern Interior, and South Central Alaska

Issued By: Alaska Interagency Coordination Center Predictive Services

Click on the following images for direct links to the maps.



For additional fuels information visit <https://akff.mesowest.org/>

Sources: AICC Predictive Services – Fuels/Fire Danger web page, Alaska Fire & Fuels web page

The Coffee Brief is posted at PLs 4 and 5 only.

