



Coffee Brief

Date: June 11, 2022

Preparedness Levels & Alaska Fire Activity

Alaska 3 National 2

Light Initial Attack Activity New Fires and Acres: 4 fires 91 acres + 97,110 large fire growth currently 7 staffed fires

Sources: National and AICC Situation Report

Resources

4 Jump ships with ~27 SMJ's as of 0900 at 3 bases, currently have 4 SMJ booster orders filled ~ 48 SMJ's committed

2 Air Attack, 2 ASM, 2 Large Air tankers, 1 additional Air tanker has been ordered, 6 Fire Bosses. (BC Group inbound – Birddog + 6 Fire Bosses eta 6/11 ordered on the Northwest Compact) ASM B-9 is traveling up today from Boise

State Forestry has augmented their fire staff with ~30+ overhead through the Northwest Compact. AFS is ordering an IMT3 to preposition

Currently have ordered 3 T-2 Helicopters and 1 T-3 Helicopter with modules coming from the L-48. State Forestry has hired 5 CWN helicopters throughout Alaska to support their fires.

Arriving Crews: 5 T-1 crews arriving FBK 6/12/2022 2 assigned to East Fork, 2 will go to State Forestry and 1 will be for AFS TBD and additional order for 5 T-1 or T2IA has been placed for 6/15 arrival into FBK.

IMT2 Butteri has operational control over the East Fork fire: Big River and Mooseheart contract crews as well as four more smokejumpers were mobilized to Saint Marys to provide support for fire suppression activities. The dozer line was reinforced with heavy large tanker use. Ready state was initiated and a Type 2 IMT team was briefed and put in place for their transition.

Weather Summary

DISCUSSION...A warming and drying trend will begin today in the Interior with widespread 70s likely by Monday. South winds through Alaska Range passes will increase to 15 to 30 mph on Monday, and near Red Flag conditions are possible near Delta Junction and near Healy. Thunderstorms today will be isolated along the Alaska Range and east of Salcha into the Fortymile Country, and also from Hughes to Bettles and northwest to the Brooks Range foothills. Sunday expect isolated thunderstorms along the Alaska Range and east of Ruby with the exception of the Yukon Flats, and widely scattered thunderstorms along the Tanana River east of Fairbanks. Isolated thunderstorm coverage expands Monday to include most of the Interior east of a line from Ambler to Lake Minchumina.

Fuels/Fire Potential

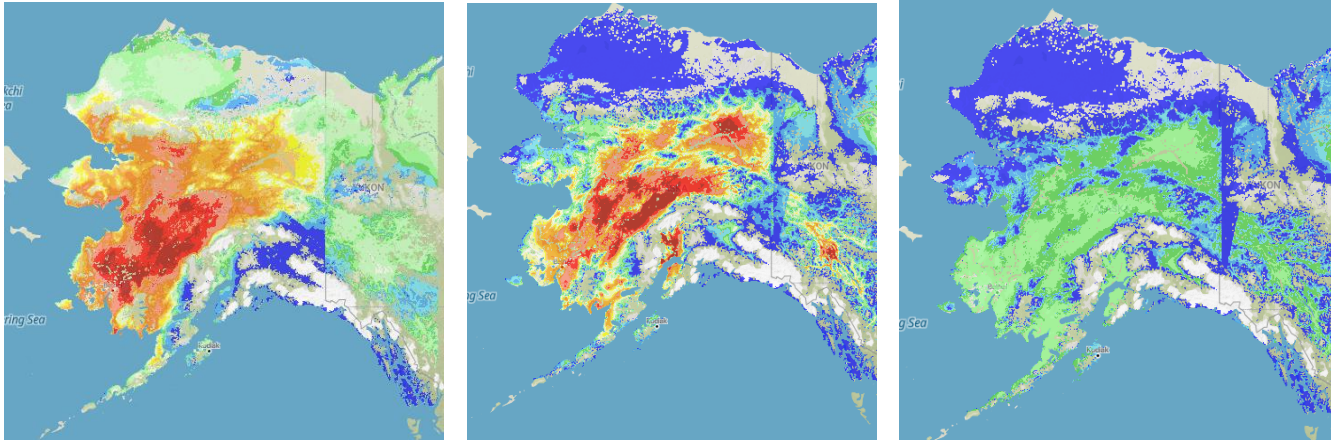
Though recent rains have moderated the fine fuels from the Panhandle through Copper River Basin and into South Central Alaska, some areas have received little rain and are showing spots of drier fine fuels. In particular, fuels in South Central have experienced more severe drying and received the lightest and spottiest rainfall from this event.

The most concerning fuels are in the central and western Interior and down to Southwest. Surface fuels are extremely dry, and strong, gusty winds are boosting the Initial Spread Index to Extreme values, enhancing the threat for wind-driven fires.

The deeper duff layers continue to warm and dry in the Interior, and many areas now have values of the Build-up Index (BUI) above the critical threshold of 80, indicating that the deeper layers will contribute to wildfire behavior, and some fires may be increasingly resistant to control. Fuels that are normally barriers to fire spread may not slow fire spread due to this long-term drying trend

Fuels Status [Alaska Fire and Fuels Map](#)

[A Fuels and Fire Behavior Advisory ... for Alaska.](#)



For additional fuels information visit <https://akff.mesowest.org/>

Sources: AICC Predictive Services – Fuels/Fire Danger web page, Alaska Fire & Fuels web page

Critical Needs

Logistical aircraft/Crews/Plans positions, Smokejumpers/Dispatcher positions

Source: AMAC Incident Prioritization List, ICS-209s

