



Coffee Brief

Date: 6/14/2022

Preparedness Levels & Alaska Fire Activity

Alaska	3
National	2

Light Initial Attack Activity New Fires and Acres: 2 Fires for 201 Acres

There are currently 8 staffed fires with 443 personnel. Yesterday's large fire growth was 65,721 acres.

Sources: National and AICC Situation Report

Resources

AVIATION:

5 jump ships with ~ 30 jumpers, 76 jumpers committed.

More Air Resources will show on mid-morning edition

CREWS:

CREWS					
IHC		T2IA		T2	
Name	Incident	Name	Incident	Name	Incident
Entiat	Bolgen Creek	Chena	East Fork	CATG	Bolgen Creek
Pioneer Peak	Aghaluk Mountain	Gannett Glacier	Kichatna	Big River	East Fork
Rogue River	East Fork	Midnight Sun	Hog Butte	North Star	East Fork
Union	Aghaluk Mountain	White Mountain	Kichatna	Yukon	Submarine Creek
Winema	Aghaluk Mountain			Capstone	East Fork
Zig Zag	East Fork			SES K River	Batztoa Lake

MISCELLANEOUS:

5 additional IHC's from the lower 48 are scheduled to arrive at FBK tomorrow.

AK IMT2 Black Team is assigned to the Aghaluk Mountain Incident and will in-brief today.

AK IMT2 Green Team is currently in command of the East Fork incident.

SMOD: Tanana Chiefs – Tom Cook

Source: IROC Reports

Weather Summary

Today brings a much-needed reprieve for fire danger in western Alaska, including Southwest. Substantial rain is expected in the Northwest and lesser amounts in Southwest. Though this will only be enough to slow fire activity for a day or so and not enough to cause long-term subjugation of fires there, the overall pattern will be a little cooler and damper than it's been, with highs in the 60s and RHs only into the 30 during the daytime.

Meanwhile, the central and eastern part of the state are beginning a significant warming trend, with temperatures into the 70s for much of the central and eastern Interior through the next week. With this somewhat disorganized ridge that sets up over the east, instability will abound. Thus the chance for afternoon showers and thunderstorms will be increasing dramatically over the next few days, with Tuesday and Wednesday expected to be quite active. Today, wet thunderstorms are expected in parts of South Central, up through the Alaska Range and into the central Interior.

With the change in flow to a southerly component and the ridge building in the east, stronger winds are expected through much of the mainland today. Funneling through the passes of the Alaska Range, as well as downsloping effects are likely to bring near Red Flag criteria to the north side of the mountains, specifically in the area from Healy to Delta.

Source: Alaska 7-Day Outlook

Fuels/Fire Potential

Fine fuels remain mostly moderated from the Panhandle through Copper River Basin. Much of South Central has received little rain in the last few days, and many stations are showing that fine fuels are burnable. Mid and deeper duff layers there have continued to dry over the last week, despite the cooler and damper weather.

The most concerning fuels are in the central and western Interior and down to Southwest. Portions of western Alaska are forecast to receive moisture, dampening surface fuels. Elsewhere surface fuels are still dry and are keeping the Initial Spread Index near Extreme values throughout portions of Southwest. Tomorrow, moisture is forecast to continue slowing fire progression, though it won't be enough rain for long-term impacts to the fires there.

The deeper duff layers continue to dry in the Interior, Southwest, and South Central. Many stations in these areas now have values of the Buildup Index (BUI) above the critical threshold of 80 and pushing over 100, indicating that the deeper layers will contribute to wildfire behavior and lightning holdover potential. Many fires will be increasingly resistant to control. Three weeks of drying has made subsurface fuels across the Interior very flammable as we approach the solstice.

Source: Alaska 7-Day Outlook

Fuels Status [Alaska Fire and Fuels Map](#)

[A Fuels and Fire Behavior Advisory has been issued for Alaska.](#)

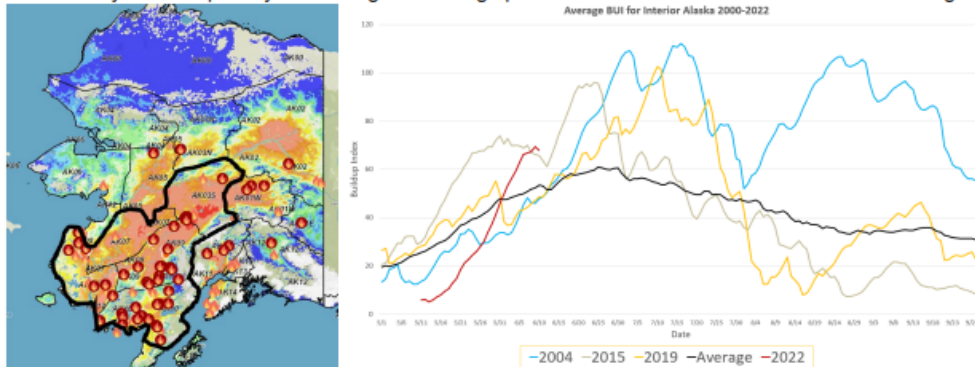
Fuels and Fire Behavior Advisory Southwest and Central Interior Alaska

Valid: June 12 – June 25, 2022

Subject: Exceptional landscape flammability and widespread ongoing large fire growth.

Discussion: The Buildup Index (BUI) is the best indicator of seasonal severity and overall flammability of fuels in Alaska. It represents deeper drying in the duff layers and greater fuel availability. Large fire growth occurs from mid-June to mid-July surrounding the summer solstice when long days and rapid drying can produce elevated BUI levels. Southwest Alaska normally experiences shorter periods of high flammability as they are prone to intermittent rain due to marine influences. Beginning in the middle of May, southwest Alaska has experienced continued hot, dry, and windy conditions, drying out fuels, retarding green-up and producing significant large fire growth. Many fires in southwest Alaska have experienced exceptionally large fire growth over the last week, which is unusual for the area.

Difference from normal conditions: The attached graph shows the current 2022 BUI trend for the Interior of Alaska compared to other busy fire seasons. 2022 has been above average BUI since May 31, and higher than 2015 levels since June 6. Southwest Alaska has already experienced abnormally large fire growth for this time of year. Multiple days of wetting rain adding up to more than one inch will be needed for lasting relief.



Concerns to Firefighters and the Public:

- Spruce stands are extremely flammable, will ignite readily, exhibit rates of spread more than one mile per hour, torch, and spot prolifically up to ¼ mile or more, and exhibit intense crown fire behavior.
- Temperatures above 80 degrees and RH below 30% are important thresholds for rapid spread and crown fire behavior.
- Green fuels are stressed and encouraging spread into riparian areas and less flammable hardwood forests.

Mitigation Measures:

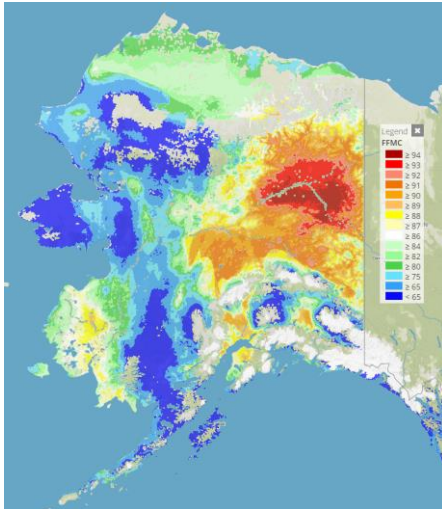
- Ensure that you can recognize hazardous fuel types including tundra that is exceptionally dry.
- Understand the triggers and thresholds for problem fire behavior.
- Monitor forecasts and indices to anticipate areas of increased flammability and extreme fire behavior.
- Maintain clear communications when working around active fires.

Area of Concern: Southwest Alaska, and the central Interior. Conditions over the next few weeks may spread to include a wider portion of Alaska.

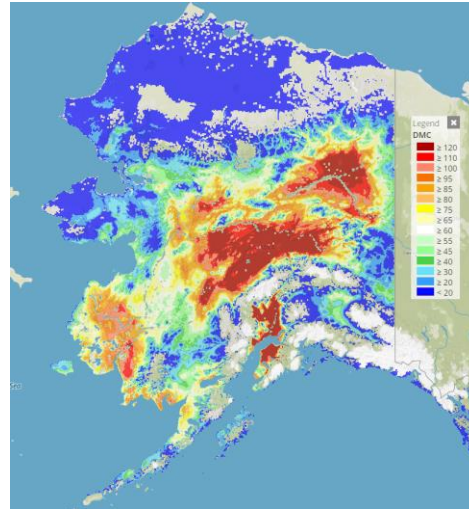
Issued By: Alaska Interagency Coordination Center Predictive Services

Click on the following images for direct links to the maps.

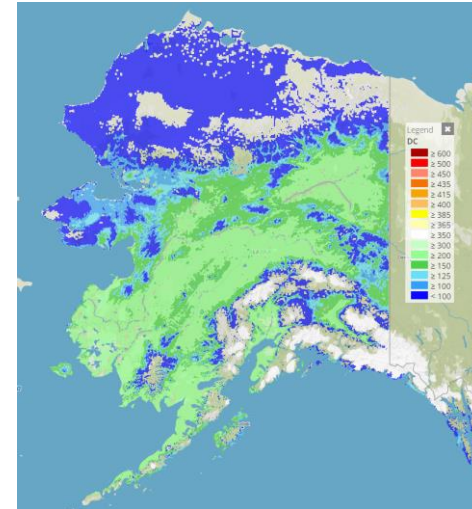
FFMC



DMC



DC



For additional fuels information visit <https://akff.mesowest.org/>

Sources: AICC Predictive Services – Fuels/Fire Danger web page, Alaska Fire & Fuels web page

Prioritized Incident Details

This information will be available after the next AMAC meeting.

Source: AMAC Incident Prioritization List, ICS-209s

The Coffee Brief is posted at PLs 4 and 5 only.

