



**Date: July 3, 2024**

Preparedness Levels & Alaska Fire Activity

Alaska	4
National	3

Light Initial Attack Activity  
New Fires and Acres: 4 fires for 1.6 acres

There are currently 16 staffed fires with ~982 personnel. Yesterday's large fire growth was ~69,000 acres.

**#900(UYD/TAD)** sent AA OAK

**#345(FAS)** sent AA OAX, J-09 dropped 8 jumpers, FB-208/209/246

Sources: National and AICC Situation Report, AICC Aircraft Logs

# Prioritized Incident Details

Top 12 Alaska Priority Summary Based on Most Recent 209's																				
New and emerging initial attack within Alaska is #1																				
Priority	Unit	Seq. #	Incident	Descriptive Location	Size in Acres	Yesterday's Acres	Change Since Last 209	% Contained/C completed	Expected Contain/Complete Date	Suppression Strategy	Complexity (Incident Management Organization)	IC	Total Personnel	Crews Assigned			Helicopters Assigned			
														T-1	T2	T2IA	T-1	T-2	T-3	
2	AKDEP	318	Riley	1 mile north of Denali National Park entrance.	388.0	388.0	-	5%	7/31	Full Suppression	Type 5 Incident	Greg Conaway - ICT3 Zach Alexakis(I) -ICT3	125	8	2	0	0	4	4	
3	AKDNS	900	Grapefruit Complex	30 miles NE of Fairbanks on both sides of Highway 2.	87,434.0	70,794.0	16,640.0	0%	10/30		Type 1 Incident	Peter Butler(I), IC Jake Livingston IC(T)	290	10	4	0	0	0	0	
4	AKFWQ	119	McDonald	9 miles southwest of Salcha	141,625.0	137,406.0	4,219.0	0%	10/1	Point Zone Protection	Type 3 Incident	IC Kudo IC-T Schumacher	75	1	0	0	0	1	0	
5	AKDNS	312	Montana Creek	15 miles south of Talkeetna, AK	174.0	174.0	-	53%	9/30	Full Suppression	Type 3 Incident	Timothy Sherwin, ICT3	120	1	0	2	0	0	0	
6	AKDNS	240	Main	7 Miles SW of Ruby	19,952.2	11,197.1	8,755.1	0%	10/1	Monitor	Type 4 Incident	Matt Kilgriff Gina Troy(I)	32	0	1	0	0	0	0	
7	AKDNS	213	Deep	9 Miles S of Lake Minchumina	16,744.0	16,744.0	-	0%	9/28	Point Zone Protection	Type 4 Incident	Kristy Hajny	52	0	4	0	0	0	2	
8	AKDNS	252	Deception Pup	3 miles northwest of Central, Alaska	121.0	121.0	-	90%	10/1	Full Suppression	Type 3 Incident	Julia Lauch ICT3 and Nolin Page ICT3(I)	76	0	2	0	0	1	0	
8	AKDHCN	259	Flasco	Near Circle Alaska	7.0	9.5	(2.5)	0%	7/5	Full Suppression	Type 5 Incident	Idaho Team 3, Julia Lauch IC	10	0	0	0	0	0	0	
9	AKDNS	158	Oskawalik River	18 miles south of Crooked Creek, AK.	1,929.7	1,925.7	4.0	0%	8/1	Monitor	Type 5 Incident	B.Quimby ICT3	0	0	0	0	0	0	0	
10	AKSWR	209	Naluk	16 Miles SE of Kiana	15,338.1	15,338.1	-	0%	10/1	Point Zone Protection	Type 4 Incident	E. Butterfield ICT4 Alaska Fire Service	12	0	0	0	0	0	0	

Source: AMAC Incident Prioritization List, ICS-209s

## Resources

Aviation within Alaska	Total
Air Tactical	8
Air Tankers	3
FireBosses	8
Scoopers	4
SMKJ	5
Utility AC	14
Helicopter, Type 1	1
Helicopter, Type 2	15
Helicopter, Type 3	12
<b>Total Aircraft</b>	<b>70</b>

Crews Committed within Alaska	Total
Type2IA	7
Type 1	15
Type 2	8
Type 1 Module	1
Type 2 Module	2
Suppression Module	3
<b>Total Crews</b>	<b>36</b>

Incident Mangement Teams in Alaska	Total
CIMT	2
IMT 1	
IMT 2	
IMT 3	2
<b>Total IMTs</b>	<b>4</b>

## **AVIATION**

- B61 entered the lineup, based out of FBK
- AA 0SG to preposition in GAL
- AA-602 N93ME came up for Grapefruit Complex, parked at FAI

## **AIRSPACE/TFRs**

- #900 Grapefruit Complex (UYD/TAD): 4/5782
- #318 Riley (TAD): 4/6067
- #119 McDonald (MID): 4/6081
- #276(FAS): TFR 4/6533

## **SMOKEJUMPER**

Anticipated smokejumpers available: ~  
SMKJ's committed ~ 73

### [Smokejumper Demobilizations](#)

Yesterday: #334(GAD):4, #318(TAD):10, #169(SWS):2, #305(FAS):6, #337(GAD): 8, #334(GAD):10  
Planned for today: #330(UYD):12

## **CREWS**

- 5 AK contract crews committed and 4 available GACC
- Midnight Sun IHC available Friday 7/5
- Chena IHA available Saturday 7/6

## **NICC JET MOVEMENT**

### *Jet Mobilizations:*

- Jet #1 – Arrived 6/24, all Crews on incident
- Jet #2 – Arrived 6/26, all Crews on incident
- Jet #3 – Arrived 6/29, all Crews on incident
- Jet #4 – Arrived 7/1, all Crews on incident
- Jet #5 – Arrived yesterday 7/3

## **OVERHEAD/TEAMS**

- 54 pending overhead requests
- CIMT – AK Team 2 Sanford – Committed to Riley #318(TAD)

- CIMT - AK Team 3 Butteri – Committed to Grapefruit Complex #900(UYD)
- IMT3 – WY Team 3 Sherwin - assigned to Montana Creek Fire #312(MSS)
- IMT3 – ID Team 1 Launch - assigned to Central Group - Deception Pup #252(UYD) and Flasco #259(UYD) – Turning fires back over to zone today 7/4
- AK CIMTs available GACC only

Source: IROC Reports, [National Smokejumper Status Report](#), AK Incident Aircraft Tracking Spreadsheet & AICC Documentation, 2024 IMT Tracking Report

## Weather Summary

As the high pressure that has been over Interior Alaska shifts southward, this is allowing an Arctic Low to move south, tightening the pressure gradient over northern Alaska. This is creating strong west to southwest winds across the Interior. Gusts to near 50 mph on some of the most exposed hilltops of the northern Interior are in the forecast today, with only slightly lower speeds for tomorrow.

Though temperature and humidity have moderated, the potential for rapid fire spread still exists with these strong winds. Fires that haven't gotten precipitation yet have the chance to make big runs to the northeast today and tomorrow.

Fortunately, a series of very wet waves are inbound for most of the Interior. The Northwest has already picked up several inches of rain, and that band is moving into the central Interior later today. Some rain may get to the east side of the state, but it will be spotty. Thursday looks to bring a significant wave that will bring more wetting rains to a wider footprint in the east, as well as more of Southwest Alaska.

Southern Alaska will be under the ridge through Friday. This will bring moderately warmer and drier weather to South Central and the southernmost parts of Southwest.

The wet southwest flow sets up with more determination this weekend, bringing wetting rains to all parts of the mainland. This pattern continues into early next week.

## Fuels/Fire Potential

Moisture and moderating temperatures and humidities have reduced indices in many areas. However, there is still a swath of Very High and Extreme Fine Fuel Moisture Codes (FFMC), Initial Spread Indices (ISI), and Fire Weather Indices (FWI) from the northeastern Interior to the southern Tanana Zone, to the Kuskokwim Delta. Surface fuels are receptive to ignitions and rapid spread. Extremely strong southwesterly winds have fire managers on alert for rapid fire movement.

The Yukon Flats continue to have the highest indices throughout all of the burnable fuel column, with Duff Moisture Codes and Buildup Indices showing Very High and Extreme. Since this area is also expected to pick up the least rainfall, this will be where the fire season continues to be the busiest.

Continuing rainfall into the weekend will continue to wet these fuels, moderating the fine fuels and upper duff very quickly, but also impacting the mid duff layers by next week.

Source: Alaska 7-Day Outlook

**...NO RED FLAG WARNINGS or FIRE WEATHER WATCHES...**

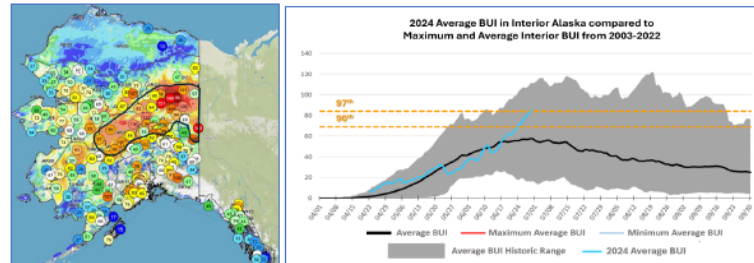
**Fuels and Fire Behavior Advisory  
Central to Northeast Interior Alaska**

*Valid: June 29 – July 12, 2024*

**Subject:** Exceptional landscape flammability and widespread ongoing large fire growth.

**Discussion:** The Buildup Index (BUI) is the best indicator of seasonal severity and overall flammability of fuels in Alaska. It represents deeper drying in the duff layers and greater fuel availability. Large fire growth generally occurs from mid-June to mid-July surrounding the summer solstice when long days and rapid drying can produce elevated BUIs. Southwest Alaska normally experiences shorter periods of high flammability due to marine influences but has had numerous fires burning since the middle of June across a wide swath of the state. The area of most significant fire growth is occurring from the southern central Interior, through the northeast Interior to the Canadian border. Hot weather and a dry air mass has put BUIs at near-record levels.

**Difference from normal conditions:** The attached graph shows the current 2024 BUI trend for the Interior of Alaska compared to other busy fire seasons. 2024 has been above average BUI since May 31, and higher than 2019 levels for the same period. Convective precipitation has moderated values in some areas but forecast high pressure will rapidly increase values. Much of the landscape has experienced large fire growth earlier than usual. Multiple days of wetting rain adding up to more than one inch will be needed for lasting relief.



**Concerns to Firefighters and the Public:**

- Spruce stands are extremely flammable, will ignite readily, exhibit rates of spread more than one mile per hour, torch, and spot prolifically up to ¼ mile or more, and exhibit intense crown fire behavior.
- Temperatures above 80 degrees and RH below 30% are important thresholds for rapid spread and crown fire behavior. Strong winds are not required for large fire growth.
- Long-term drying has stressed green fuels and is encouraging spread into riparian areas and less flammable hardwood forests. These fuel types may no longer be barriers to fire spread.

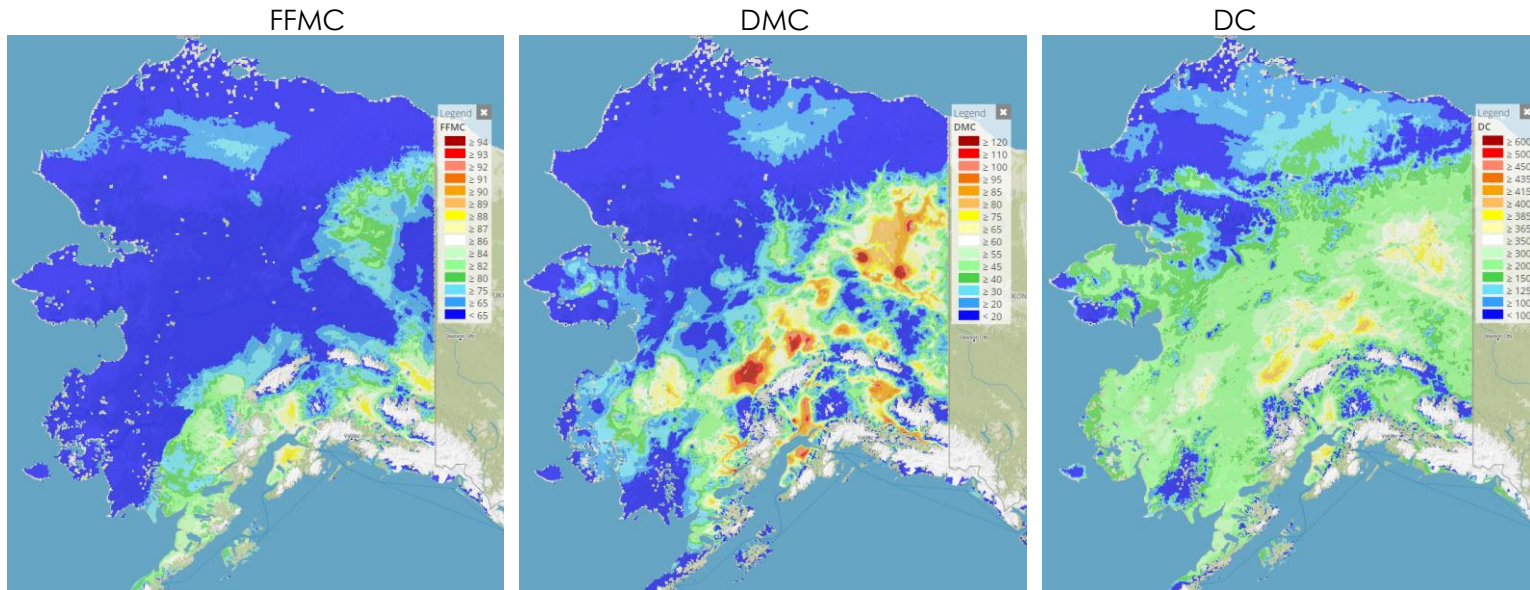
**Mitigation Measures:**

- Ensure that you can recognize hazardous fuel types including tundra that is exceptionally dry.
- Understand the triggers and thresholds for problem fire behavior.
- Monitor forecasts and indices to anticipate areas of increased flammability and extreme fire behavior.
- Maintain clear communications when working around active fires.

**Area of Concern:** Southern central to northeastern Interior to the ALCAN border

**Issued By:** Alaska Interagency Coordination Center Predictive Services

Click on the following images for direct links to the maps.



For additional fuels information visit <https://akff.mesowest.org/>

Sources: AICC Predictive Services – Fuels/Fire Danger web page, Alaska Fire & Fuels web page

The Coffee Brief is posted at PLs 4 and 5 only.

