



Date: July 3, 2024

Preparedness Levels & Alaska Fire Activity

Alaska	5
National	3

Light Initial Attack Activity
New Fires and Acres: 5 fires for 60.6 acres

There are currently 19 staffed fires with ~974 personnel. Yesterday's large fire growth was ~5,934 acres.

#326(DAS): AA-0AX, S-261/263

#318(TAD): ASM-K9, AA-0SG, S-285/286, FB-218/219, ASM K-7, FB-246/208/209

#900/Grapefruit(TAD/UYD): AA-0AK, AA-0AX

Sources: National and AICC Situation Report, AICC Aircraft Logs

Prioritized Incident Details

Top 12 Alaska Priority Summary Based on Most Recent 209's

New and emerging initial attack within Alaska is #1																			
Priority	Unit	Seq. #	Incident	Descriptive Location	Size in Acres	Yesterday's Acres	Change Since Last 209	% Contained/C completed	Expected Contain/Complete Date	Suppression Strategy	Complexity (Incident Management Organization)	IC	Total Personnel	Crews Assigned			Helicopters Assigned		
														T-1	T2	T2IA	T-1	T-2	T-3
2	AKDEP	318	Riley	1 mile north of Denali National Park entrance.	388.0	383.0	35.0	25%	7/31	Full Suppression	Type 5 Incident	Greg Conaway - ICT3 Zach Alexakis(t) -ICT3	135	4	2	0	0	3	3
3	AKDNS	900	Grapefruit Complex	30 miles NE of Fairbanks on both sides of Highway 2.	70,794.0	58,153.0	12,641.0	0%	10/30		Type 1 Incident	Peter Butteri, IC Jake Livingston IC(T)	304	8	4	0	0	0	0
4	AKDNS	312	Montana Creek	15 miles south of Talkeetna, AK	174.0	150.0	24.0	48%	9/30	Full Suppression	Type 3 Incident	Timothy Sherwin, ICT3	97	1	0	2	0	0	0
5	AKTKCN	169	Portage	1 mile south of Georgetown, AK.	1,005.6	823.4	182.2	0%	8/1	Point Zone Protection	Type 3 Incident	B.Quimby ICT3	33	0	0	2	0	0	0
6	AKFWQ	119	McDonald	9 miles southwest of Salcha	137,406.0	137,406.0	-	0%	10/1	Point Zone Protection	Type 3 Incident	IC Kudo IC-T Schumacher	76	1	0	0	0	1	0
7	AKDNS	252	Deception Pup	3 miles northwest of Central, Alaska	121.0	121.0	-	90%	10/1	Full Suppression	Type 3 Incident	Julia Lauch ICT3 and Nolin Page ICT3†	76	0	2	0	0	1	0
8	AKDHCN	259	Flasco	Near Circle Alaska	9.5	9.5	-	0%	7/5	Full Suppression	Type 5 Incident	Idaho Team 3, Julia Lauch IC	10	0	0	0	0	0	0
9	AKDNS	276	Gold King Creek	38 miles ESE of Anderson	3,100.0	2,914.0	186.0	0%	7/10	Point Zone Protection	Type 4 Incident	Stark, Jeffery	34	0	2	0	0	0	0
10	AKDNS	213	Deep	9 Miles S of Lake Minchumina	16,744.0	13,769.0	2,975.0	0%	9/28	Point Zone Protection	Type 4 Incident	Kristy Hajny	52	0	4	0	0	0	3
11	AKSWR	209	Naluk	16 Miles SE of Kiana	15,338.1	12,524.1	2,814.0	0%	10/1	Point Zone Protection	Type 4 Incident	E. Butterfield ICT4 Alaska Fire Service	24	0	0	0	0	0	0
12	AKDNS	240	Main	13.5 Miles SW of Ruby	11,197.1	9,250.9	1,946.2	0%	10/1	Monitor	Type 5 Incident	Dustin Widmer FMO (Detail) Alaska Fire Service Galena Zone	0	0	0	0	0	0	0
13	AKDNS	311	Tustumena Lake	19.3 Miles south of Soldotna	35.2	35.2	-	100%	7/10	Full Suppression	Type 4 Incident	Scott Beninati	0	0	0	0	0	0	0
14	AKKAP	143	American Creek	25 miles northeast from King Salmon	4,450.5	4,450.5	-	0%	8/30	Monitor	Type 5 Incident	Seth Ross	0	0	0	0	0	0	0

Source: AMAC Incident Prioritization List, ICS-209s

Resources

Aviation within Alaska	Total
Air Tactical	7
Air Tankers	3
FireBosses	8
Scoopers	4
SMKJ	5
Utility AC	10
Helicopter, Type 1	1
Helicopter, Type 2	15
Helicopter, Type 3	12
Total Aircraft	65

Crews Committed within Alaska	Total
Type2IA	7
Type 1	13
Type 2	8
Type 1 Module	1
Type 2 Module	2
Suppression Module	3
Total Crews	34

Incident Mangement Teams in Alaska	Total
CIMT	2
IMT 1	
IMT 2	
IMT 3	2
Total IMTs	4

AVIATION

- Most Bell Mediums returned to service
- AA-OSG is back I/S. B-61 **enroute** from L-48 (N1542- RON KTN).

AIRSPACE/TFRs

- #900 Grapefruit Complex (UYD/TAD): 4/5782
- #318 Riley (TAD): 4/6067
- #119 McDonald (MID): 4/6081
- #276(FAS): TFR 4/6533 - **New**

SMOKEJUMPER

- Anticipated smokejumpers available: ~ 40
- ~ 84 SMKJ's committed

Smokejumper Demobilizations

Yesterday: #334(GAD): 4 (overnighting at GAL)
Planned for today:

CREWS

- 5 AK contract crews committed and 4 available GACC
- Midnight Sun IHC available Friday 7/5
- Chena IHA available Saturday 7/6

NICC JET MOVEMENT

Jet Mobilizations:

- Jet #1 – Arrived 6/24, all Crews on incident
- Jet #2 – Arrived 6/26, all Crews on incident
- Jet #3 – Arrived 6/29, all Crews on incident
- Jet #4 – Arrived 7/1, all Crews on incident
- Jet #5 – Arrived 7/3 – Arriving today

OVERHEAD/TEAMS

- 54 pending overhead requests
- CIMT – AK Team 2 Sanford - ordered for #318(TAD) Riley
- CIMT - AK Team 3 Butteri - assigned to assigned to Globe #253(UYD). Also managing the Grapefruit Complex #900(UYD)
- IMT3 – WY Team 3 Sherwin - assigned to Montana Creek Fire #312(MSS)
- IMT3 – ID Team 1 Launch - assigned to Central Group - Deception Pup #252(UYD) and Flasco #259(UYD) – **Turning fires back over to zone 7/4**
- AK CIMTs available GACC only

Weather Summary

High pressure over Interior Alaska is shifting southward and weakening. Today will be the last hot and dry day across the Interior. The area of thunderstorms will shrink to right along the ALCAN border this afternoon. As the high moves, the low in the Arctic also drops farther south, increasing the pressure gradient between the systems. This is already creating stronger west to southwest winds in the northwest. These gusty winds are expanding across the Interior today and tomorrow. Expect gusts to near 50 mph on some of the most exposed hilltops of the northern Interior by tomorrow afternoon.

Today sees a Red Flag Warning out for the north central and northeastern Interior for hot, dry, and windy conditions. It will expire at midnight tonight, but the winds will continue to be strong for the foreseeable future while temperatures and humidities moderate.

In the northwest, the first of a series of shortwaves begins to move through from that Arctic Low. This will bring wetting rains to the northwest and western half of the Interior by Wednesday. Some rain may get to the east side of the state, but it will be spotty. Thursday looks to bring a more significant wave that will bring more wetting rains to a wider footprint in the east.

Southern Alaska will be under the ridge beginning tomorrow through Friday. This will bring moderately warm and dry weather to South Central and the southernmost parts of Southwest.

On Saturday, southwest flow sets up with more determination over the state. This would bring wetting rains to all parts of the mainland. This pattern continues into early next week. *Source: Alaska 7-Day Outlook*

Fuels/Fire Potential

Very High and Extreme Fine Fuel Moisture Codes (FFMC) across the northern Interior means that surface fuels are receptive to ignitions, both human and natural. Initial Spread Indices will be Extreme across much of the northern Interior through Wednesday, indicating rapid spread potential is likely.

Spruce Adjective Rating keys in on the same areas across the northern Interior, with the Yukon Flats and north central Interior having Extreme conditions again today.

The Yukon Flats continue to have the highest indices throughout all of the burnable fuel column, with Duff Moisture Codes and Buildup Indices showing Very High and Extreme. Lightning is on the wane, so new ignitions are unlikely. However, hot, dry, and windy weather will combine with dry fuels for rapid fire growth and extreme fire behavior.

Rains expected late in the week will bring big changes to these fuel conditions, moderating the fine fuels and upper duff very quickly. *Source: Alaska 7-Day Outlook*

Fuels Status [Alaska Fire and Fuels Map](#)

...NO RED FLAG WARNING...

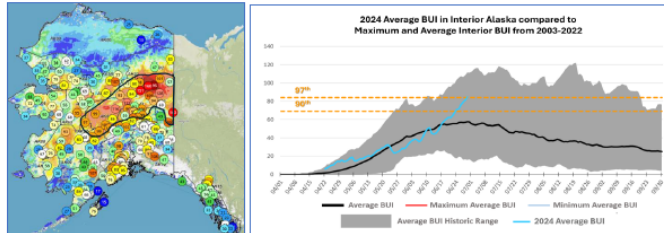
Fuels and Fire Behavior Advisory Central to Northeast Interior Alaska

Valid: June 29 – July 12, 2024

Subject: Exceptional landscape flammability and widespread ongoing large fire growth.

Discussion: The Buildup Index (BUI) is the best indicator of seasonal severity and overall flammability of fuels in Alaska. It represents deeper drying in the duff layers and greater fuel availability. Large fire growth generally occurs from mid-June to mid-July surrounding the summer solstice when long days and rapid drying can produce elevated BUIs. Southwest Alaska normally experiences shorter periods of high flammability due to marine influences but has had numerous fires burning since the middle of June across a wide swath of the state. The area of most significant fire growth is occurring from the southern central Interior, through the northeast Interior to the Canadian border. Hot weather and a dry air mass has put BUIs at near-record levels.

Difference from normal conditions: The attached graph shows the current 2024 BUI trend for the Interior of Alaska compared to other busy fire seasons. 2024 has been above average BUI since May 31, and higher than 2019 levels for the same period. Convective precipitation has moderated values in some areas but forecast high pressure will rapidly increase values. Much of the landscape has experienced large fire growth earlier than usual. Multiple days of wetting rain adding up to more than one inch will be needed for lasting relief.



Concerns to Firefighters and the Public:

- Spruce stands are extremely flammable, will ignite readily, exhibit rates of spread more than one mile per hour, torch, and spot prolifically up to ¼ mile or more, and exhibit intense crown fire behavior.
- Temperatures above 80 degrees and RH below 30% are important thresholds for rapid spread and crown fire behavior. Strong winds are not required for large fire growth.
- Long-term drying has stressed green fuels and is encouraging spread into riparian areas and less flammable hardwood forests. These fuel types may no longer be barriers to fire spread.

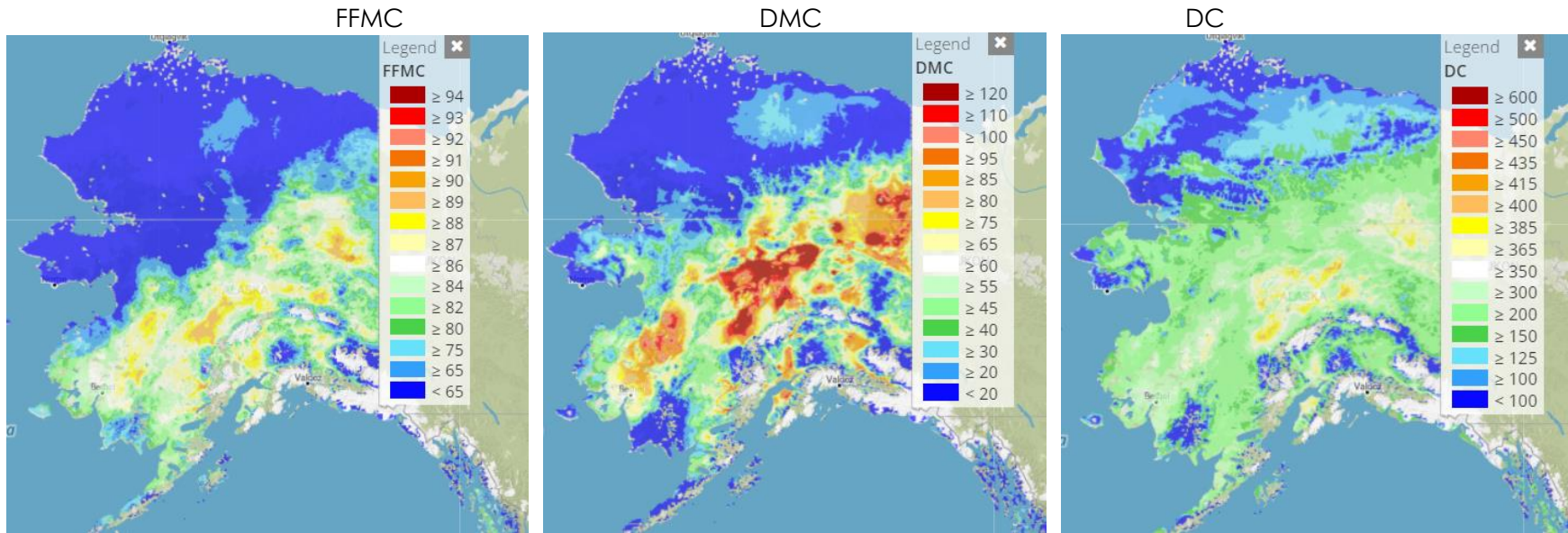
Mitigation Measures:

- Ensure that you can recognize hazardous fuel types including tundra that is exceptionally dry.
- Understand the triggers and thresholds for problem fire behavior.
- Monitor forecasts and indices to anticipate areas of increased flammability and extreme fire behavior.
- Maintain clear communications when working around active fires.

Area of Concern: Southern central to northeastern Interior to the ALCAN border

Issued By: Alaska Interagency Coordination Center Predictive Services

Click on the following images for direct links to the maps.



For additional fuels information visit <https://akff.mesowest.org/>

Sources: AICC Predictive Services – Fuels/Fire Danger web page, Alaska Fire & Fuels web page

The Coffee Brief is posted at PLs 4 and 5 only.

