



**Date: July 5, 2024**

Preparedness Levels & Alaska Fire Activity

Alaska	4
National	3

Light Initial Attack Activity  
New Fires and Acres: 2 fires for .2 acres

There are currently 15 staffed fires with ~1,031 personnel. Yesterday's large fire growth was ~6,550 acres.

**NONE**

*Sources: National and AICC Situation Report, AICC Aircraft Logs*

## Prioritized Incident Details

Top 12 Alaska Priority Summary Based on Most Recent 209's																				
New and emerging initial attack within Alaska is #1																				
Priority	Unit	Seq. #	Incident	Descriptive Location	Size in Acres	Yesterday's Acres	Change Since Last 209	% Contained/C completed	Expected Contain/Complete Date	Suppression Strategy	Complexity (Incident Management Organization)	IC	Total Personnel	Crews Assigned			Helicopters Assigned			
														T-1	T2	T2IA	T-1	T-2	T-3	
2	AKDEP	318	Riley	1 mile north of Denali National Park entrance.	388.0	388.0	-	5%	7/31	Full Suppression	Type 2 Incident	Ed Sanford - Alaska Division of Forestry and Fire Protection	173	8	2	0	0	3	4	
3	AKDNS	900	Grapefruit Complex	30 miles NE of Fairbanks on both sides of Highway 2.	87,434.0	87,434.0	-	25%	10/30		Type 1 Incident	Peter Butteri, IC Jake Livingston IC(T)	313	11	3	0	0	1	0	
4	AKFWQ	119	McDonald	9 miles southwest of Salcha	148,823.2	141,625.0	7,198.2	0%	10/1	Point Zone Protection	Type 3 Incident	IC Kudo IC-T Schumacher	77	2	0	0	0	2	0	
5	AKDNS	240	Main	7 Miles SW of Ruby	19,952.2	19,952.2	-	0%	10/1	Monitor	Type 4 Incident	Matt Kilgriff Gina Troy(f)	63	0	1	1	0	0	0	
6	AKDNS	213	Deep	9 Miles S of Lake Minchumina	16,744.0	16,744.0	-	0%	9/28	Point Zone Protection	Type 4 Incident	Kristy Hajny	55	0	2	0	0	0	1	
7	AKDNS	312	Montana Creek	15 miles south of Talkeetna, AK	174.0	174.0	-	67%	9/30	Full Suppression	Type 3 Incident	Timothy Sherwin, ICT3	106	1	0	2	0	0	0	
8	AKDNS	158	Oskawalik River	18 miles south of Crooked Creek, AK.	4,018.0	1,929.7	2,088.3	0%	7/31	Monitor	1/0	B.Quimby ICT3	0	0	0	0	0	0	0	

Source: AMAC Incident Prioritization List, ICS-209s

## Resources

Aviation within Alaska	Total
Air Tactical	8
Air Tankers	3
FireBosses	8
Scoopers	4
SMKJ	5
Utility AC	14
Helicopter, Type 1	1
Helicopter, Type 2	15
Helicopter, Type 3	12
<b>Total Aircraft</b>	<b>70</b>

Crews Committed within Alaska	Total
Type2IA	7
Type 1	15
Type 2	8
Type 1 Module	1
Type 2 Module	2
Suppression Module	3
<b>Total Crews</b>	<b>36</b>

Incident Mangement Teams in Alaska	Total
CIMT	2
IMT 1	
IMT 2	
IMT 3	2
<b>Total IMTs</b>	<b>4</b>

## **AVIATION**

- AA-201, S-285/286, and T-545 released EOS today, travel tomorrow.
- FB-222/223 released and will travel when weather permits.
- K7 off today, back tomorrow.
- 0AK flew detection for NFDC; recovered PAQ later in the day for scheduled maintenance (should only take one day).

## **AIRSPACE/TFRs**

- #900 Grapefruit Complex (UYD/TAD): 4/5782
- #318 Riley (TAD): 4/7281
- #119 McDonald (MID): 4/7254
- #276 Gold King Creek(FAS): 4/6533

## **SMOKEJUMPER**

Anticipated smokejumpers available: ~ 60  
SMKJ's committed ~ 57

### **Smokejumper Demobilizations**

Yesterday: #330(UYD):10  
Planned for today: #209(GAD):12

## **CREWS**

- 5 AK contract crews committed and 4 available GACC
- Midnight Sun IHC will mobilize to #240(GAD) today 7/5
- Chena IHA available Saturday 7/6

## **NICC JET MOVEMENT**

### **Jet Mobilizations:**

- Jet #1 – Arrived 6/24, all Crews on incident – will depart 7/9 @1000
- Jet #2 – Arrived 6/26, all Crews on incident – will depart 7/11
- Jet #3 – Arrived 6/29, all Crews on incident
- Jet #4 – Arrived 7/1, all Crews on incident
- Jet #5 – Arrived 7/3, all Crews on incident

## **OVERHEAD/TEAMS**

- 43 pending overhead requests
- CIMT – AK Team 2 Sanford – Committed to Riley #318(TAD)
- CIMT - AK Team 3 Butteri – Committed to Grapefruit Complex #900(UYD)

- IMT3 – WY Team 3 Sherwin - assigned to Montana Creek Fire #312(MSS)
- IMT3 – ID Team 1 Launch – will transferred to McDonald #119(MID) and take command 7/4
- AK CIMTs available GACC only

Source: IROC Reports, [National Smokejumper Status Report](#), AK Incident Aircraft Tracking Spreadsheet & AICC Documentation, 2024 IMT Tracking Report

## Weather Summary

A major change in weather pattern is underway across Alaska as cool and wet air moves in from the northwest. Expect widespread wetting rains across Alaska's Interior, with spotty precipitation south of the Alaska Range. The incoming airmass is also convectively stable, meaning that it is unlikely any thunderstorms will develop in the afternoons and evenings through the holiday weekend.

Wind will also be an issue for western and northern Alaska as gusty southwest winds persist into the weekend. A few gusts over the eastern Interior may reach 40 mph today...but generally the winds will be 30 mph or lower into the weekend.

The next potential change in the weather we need to monitor is the potential for a chinook wind event in the Alaska Range next Tuesday and Wednesday. If this Chinook does in fact develop, the result will be gusty southerly winds through Alaska Range passes and a trend for warmer and drier weather across the eastern Interior.

## Fuels/Fire Potential

The Yukon Flats continue to have the highest indices throughout all of the burnable fuel column, with Duff Moisture Codes and Buildup Indices showing Very High and Extreme. Since this area is also expected to pick up the least rainfall, this will be where the fire season continues to be the busiest.

Continuing rainfall into the weekend will continue to wet these fuels, moderating the fine fuels and upper duff very quickly, but also impacting the mid duff layers by next week.

Source: Alaska 7-Day Outlook

Fuels Status [Alaska Fire and Fuels Map](#)

**...NO RED FLAG WARNINGS or FIRE WEATHER WATCHES...**

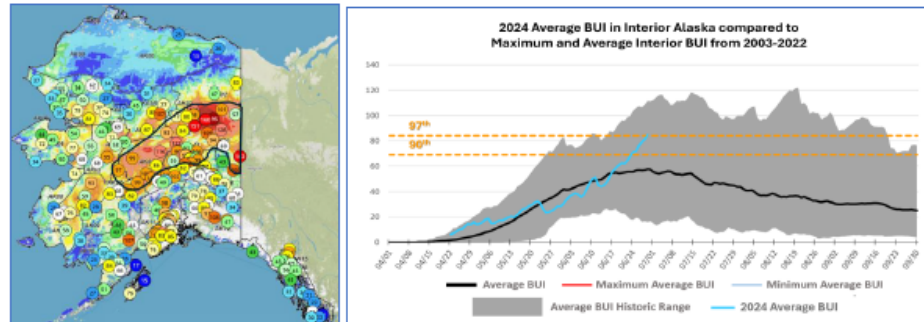
## Fuels and Fire Behavior Advisory Central to Northeast Interior Alaska

Valid: June 29 – July 12, 2024

**Subject:** Exceptional landscape flammability and widespread ongoing large fire growth.

**Discussion:** The Buildup Index (BUI) is the best indicator of seasonal severity and overall flammability of fuels in Alaska. It represents deeper drying in the duff layers and greater fuel availability. Large fire growth generally occurs from mid-June to mid-July surrounding the summer solstice when long days and rapid drying can produce elevated BUIs. Southwest Alaska normally experiences shorter periods of high flammability due to marine influences but has had numerous fires burning since the middle of June across a wide swath of the state. The area of most significant fire growth is occurring from the southern central Interior, through the northeast Interior to the Canadian border. Hot weather and a dry air mass has put BUIs at near-record levels.

**Difference from normal conditions:** The attached graph shows the current 2024 BUI trend for the Interior of Alaska compared to other busy fire seasons. 2024 has been above average BUI since May 31, and higher than 2019 levels for the same period. Convective precipitation has moderated values in some areas but forecast high pressure will rapidly increase values. Much of the landscape has experienced large fire growth earlier than usual. Multiple days of wetting rain adding up to more than one inch will be needed for lasting relief.



### Concerns to Firefighters and the Public:

- Spruce stands are extremely flammable, will ignite readily, exhibit rates of spread more than one mile per hour, torch, and spot prolifically up to ¼ mile or more, and exhibit intense crown fire behavior.
- Temperatures above 80 degrees and RH below 30% are important thresholds for rapid spread and crown fire behavior. Strong winds are not required for large fire growth.
- Long-term drying has stressed green fuels and is encouraging spread into riparian areas and less flammable hardwood forests. These fuel types may no longer be barriers to fire spread.

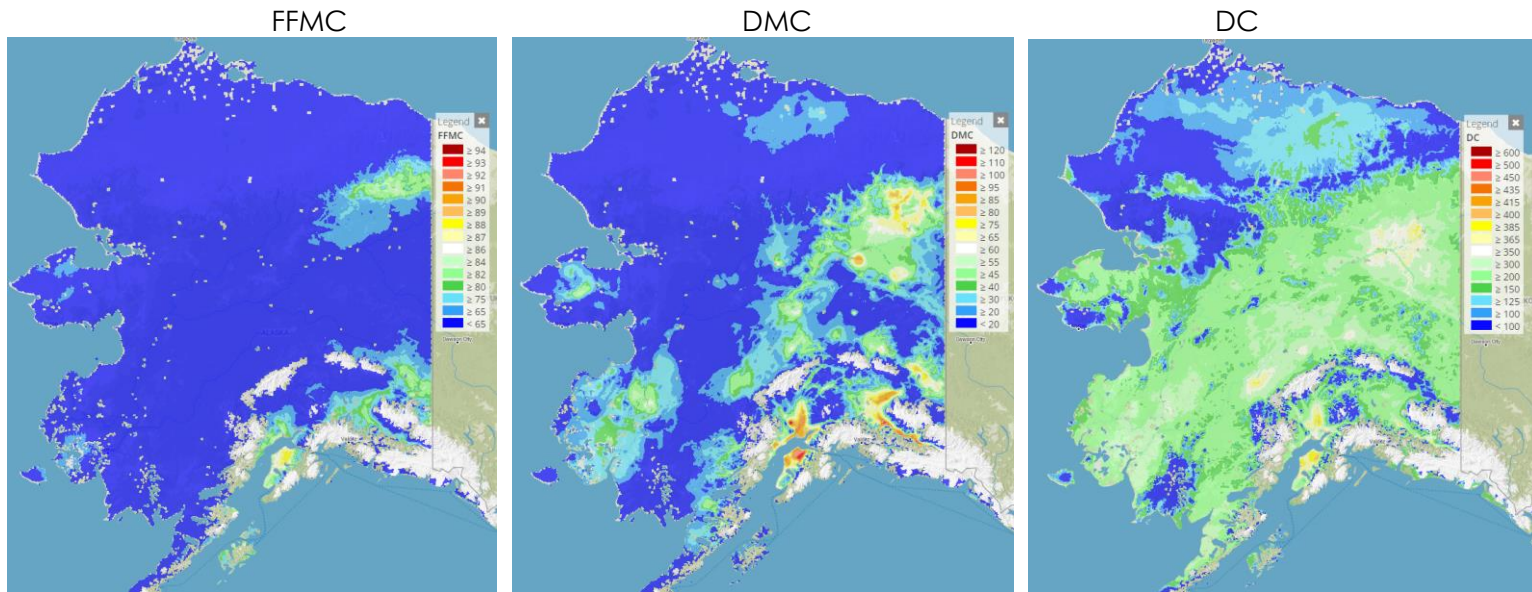
### Mitigation Measures:

- Ensure that you can recognize hazardous fuel types including tundra that is exceptionally dry.
- Understand the triggers and thresholds for problem fire behavior.
- Monitor forecasts and indices to anticipate areas of increased flammability and extreme fire behavior.
- Maintain clear communications when working around active fires.

**Area of Concern:** Southern central to northeastern Interior to the ALCAN border

**Issued By:** Alaska Interagency Coordination Center Predictive Services

Click on the following images for direct links to the maps.



For additional fuels information visit <https://akff.mesowest.org/>

Sources: AICC Predictive Services – Fuels/Fire Danger web page, Alaska Fire & Fuels web page

The Coffee Brief is posted at PLs 4 and 5 only.

