



Date: July 7, 2024

Preparedness Levels & Alaska Fire Activity

Alaska	4
National	3

Light Initial Attack Activity
New Fires and Acres: 4 fires for 30.4 acres

There are currently 9 fires and 1 complex staffed with ~866 personnel. Yesterday's large fire growth was -55 acres.

NONE

Sources: National and AICC Situation Report, AICC Aircraft Logs

Prioritized Incident Details

Top 12 Alaska Priority Summary Based on Most Recent 209's

New and emerging initial attack within Alaska is #1																			
Priority	Unit	Seq. #	Incident	Descriptive Location	Size in Acres	Yesterday's Acres	Change Since Last 209	% Contained/C completed	Expected Contain/Complete Date	Suppression Strategy	Complexity (Incident Management Organization)	IC	Total Personnel	Crews Assigned			Helicopters Assigned		
														T-1	T2	T2IA	T-1	T-2	T-3
2	AKDEP	318	Riley	1 mile north of Denali National Park entrance.	388.0	388.0	-	25%	7/31	Full Suppression	Type 2 Incident	Ed Sanford - Alaska Division of Forestry and Fire Protection	196	4	0	1	0	1	2
3	AKDNS	900	Grapefruit Complex	30 miles NE of Fairbanks on both sides of Highway 2.	87,434.0	87,434.0	-	45%	10/30		Type 1 Incident	Peter Butteri, IC Jake Livingston IC(T)	324	18	3	0	0	3	3
4	AKFWQ	119	McDonald	9 miles southwest of Salcha	148,823.2	148,823.2	-	0%	10/1	Point Zone Protection	Type 3 Incident	IC Kudo IC-T Schumacher	80	2	0	0	0	1	0
5	AKDNS	240	Main	7 Miles SW of Ruby	19,952.2	19,952.2	-	0%	10/1	Monitor	Type 4 Incident	Matt Kilgriff Gina Troy(t)	63	1	1	1	0	0	0
7	AKDNS	312	Montana Creek	15 miles south of Talkeetna, AK	174.0	174.0	-	67%	9/30	Full Suppression	Type 3 Incident	Timothy Sherwin, ICT3	107	1	0	2	0	0	0
8	AKDNS	158	Oskawalik River	18 miles south of Crooked Creek, AK.	4,018.0	4,018.0	-	0%	7/31	Monitor	Type 5 Incident	B.Quimby ICT3	0	0	0	0	0	0	0

Source: AMAC Incident Prioritization List, ICS-209s

Resources

Aviation within Alaska	Total
Air Tactical	7
Air Tankers	2
FireBosses	6
Scoopers	2
SMKJ	5
Utility AC	12
Helicopter, Type 1	0
Helicopter, Type 2	15
Helicopter, Type 3	13
Total Aircraft	62

Crews Committed within Alaska	Total
Type2IA	7
Type 1	16
Type 2	7
Type 1 Module	1
Type 2 Module	2
Suppression Module	3
Total Crews	36

Incident Mangement Teams in Alaska	Total
CIMT	2
IMT 1	
IMT 2	
IMT 3	2
Total IMTs	4

AVIATION

- Released/Departing Tac A/C: AA-0SG released mid-day and departed for L48.
- ASM-B61 released EOS and reassigned to NWCC GACC Aviation Pre-po (NDT 6/8 1200).
- S-261/263 released EOS today, reassigned to SOPS Pre-po (NDT 7/9 1000).
- J-09 released EOS and will travel to L48 tomorrow (w/ some SMKJs who are timing out?)
- H-127BH arrived in FBK 1800ish. Kent has 3 rigs for Mesa Verde Helitac.

AIRSPACE/TFRs

Released - #900 Grapefruit Complex (UYD/TAD): 4/5782

#318 Riley (TAD): 4/7281

#119 McDonald (MID): 4/7409

#276(FAS): 4/6533

SMOKEJUMPER

Anticipated smokejumpers available: ~ 50
SMKJ's committed ~ 45

Smokejumper Demobilizations

Yesterday: #301(TAD): **8**
Planned for today:

CREWS

- 5 AK contract crews committed and 4 available GACC
- Midnight Sun IHC to 240
- Chena IHA to 119
- Rifle Peak demobing commercial tomorrow (Reassigned to GB)
- Bonneville IHC demobing commercial 7/8

NICC JET MOVEMENT

Jet Mobilizations:

Jet #1 – Arrived 6/24, all Crews on incident – will demobilize 7/9 @1000

Jet #2 – Arrived 6/26, all Crews on incident – will demobilize 7/11

Jet #3 – Arrived 6/29, all Crews on incident – will demobilize 7/13

Jet #4 – Arrived 7/1, all Crews on incident – will demobilize 7/15

Jet #5 – Arrived 7/3, all Crews on incident

OVERHEAD/TEAMS

- 30 pending overhead requests

- CIMT – AK Team 2 Sanford – Committed to Riley #318(TAD)
- CIMT - AK Team 3 Butteri – Committed to Grapefruit Complex #900(UYD)
- IMT3 – WY Team 3 Sherwin - Committed to Montana Creek Fire #312(MSS)
- IMT3 – ID Team 1 Launch – Committed to McDonald #119(MID)

Source: IROC Reports, [National Smokejumper Status Report](#), AK Incident Aircraft Tracking Spreadsheet & AICC Documentation, 2024 IMT Tracking Report

Weather Summary

A wet, cool, and breezy weekend is underway across mainland Alaska. High temperatures will be confined to the 50s and 60s with humidity generally remaining above 40%. Wetting rains are possible in most areas away from the southeast Panhandle, although the southeastern Interior and the Copper River Basin may be shadowed once again.

Temperatures will slowly rebound toward normal through the coming work week, and isolated thunderstorms may develop each afternoon and evening across the Interior during the second half of the work week. Periods of rain will develop across Alaska through the week except over the eastern Interior where southerly Chinook winds will create a downslope precipitation shadow.

Source: Alaska 7-Day Outlook

Fuels/Fire Potential

Most of mainland Alaska has received several bouts of wetting rain over the last several days, and values of the fuels codes and indices have come down accordingly. However, some areas have remained dry, and fuels are much more burnable there. These areas include the Yukon Flats, the southeast Interior, and the Copper River Basin. The Kenai Peninsula is expected to receive wetting rains today.

Source: Alaska 7-Day Outlook

Fuels Status [Alaska Fire and Fuels Map](#)

...NO RED FLAG WARNINGS or FIRE WEATHER WATCHES...

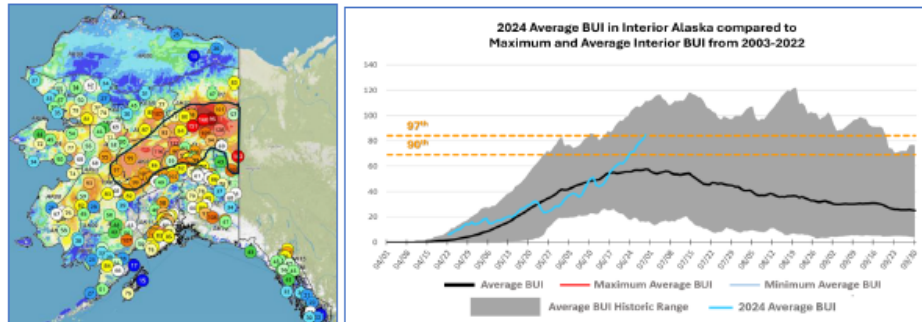
Fuels and Fire Behavior Advisory Central to Northeast Interior Alaska

Valid: June 29 – July 12, 2024

Subject: Exceptional landscape flammability and widespread ongoing large fire growth.

Discussion: The Buildup Index (BUI) is the best indicator of seasonal severity and overall flammability of fuels in Alaska. It represents deeper drying in the duff layers and greater fuel availability. Large fire growth generally occurs from mid-June to mid-July surrounding the summer solstice when long days and rapid drying can produce elevated BUIs. Southwest Alaska normally experiences shorter periods of high flammability due to marine influences but has had numerous fires burning since the middle of June across a wide swath of the state. The area of most significant fire growth is occurring from the southern central Interior, through the northeast Interior to the Canadian border. Hot weather and a dry air mass has put BUIs at near-record levels.

Difference from normal conditions: The attached graph shows the current 2024 BUI trend for the Interior of Alaska compared to other busy fire seasons. 2024 has been above average BUI since May 31, and higher than 2019 levels for the same period. Convective precipitation has moderated values in some areas but forecast high pressure will rapidly increase values. Much of the landscape has experienced large fire growth earlier than usual. Multiple days of wetting rain adding up to more than one inch will be needed for lasting relief.



Concerns to Firefighters and the Public:

- Spruce stands are extremely flammable, will ignite readily, exhibit rates of spread more than one mile per hour, torch, and spot prolifically up to ¼ mile or more, and exhibit intense crown fire behavior.
- Temperatures above 80 degrees and RH below 30% are important thresholds for rapid spread and crown fire behavior. Strong winds are not required for large fire growth.
- Long-term drying has stressed green fuels and is encouraging spread into riparian areas and less flammable hardwood forests. These fuel types may no longer be barriers to fire spread.

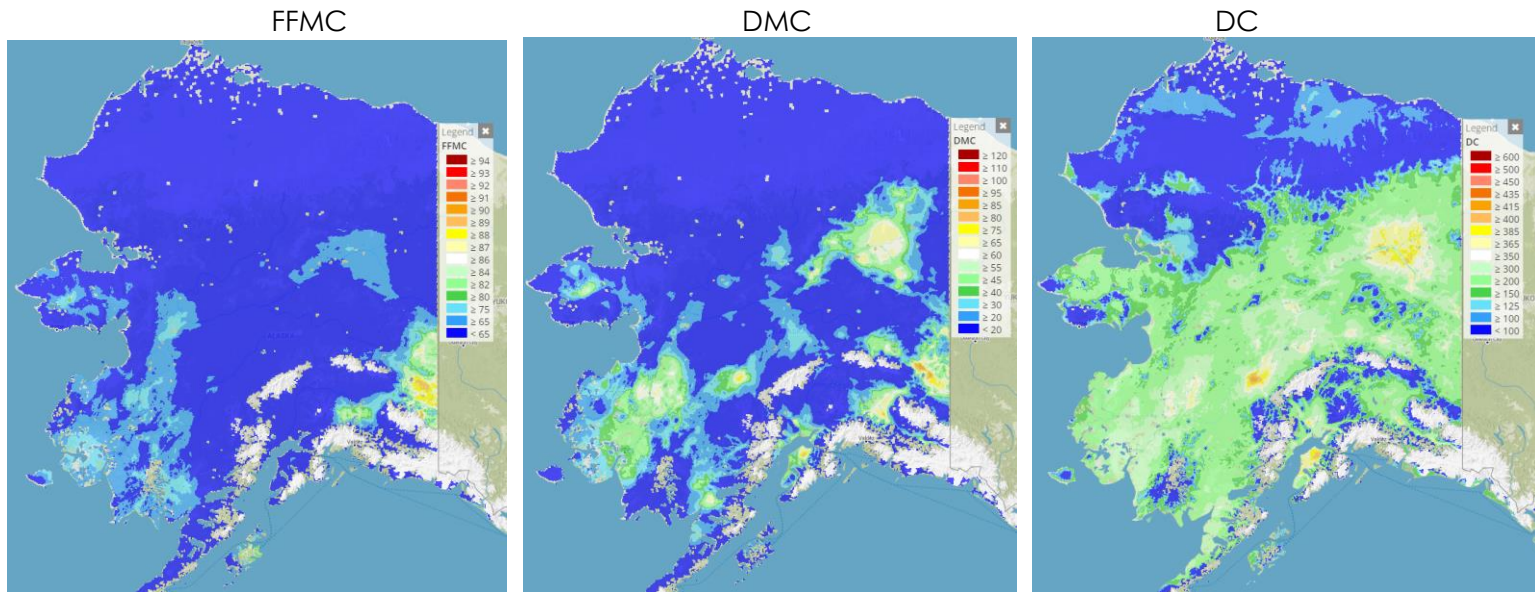
Mitigation Measures:

- Ensure that you can recognize hazardous fuel types including tundra that is exceptionally dry.
- Understand the triggers and thresholds for problem fire behavior.
- Monitor forecasts and indices to anticipate areas of increased flammability and extreme fire behavior.
- Maintain clear communications when working around active fires.

Area of Concern: Southern central to northeastern Interior to the ALCAN border

Issued By: Alaska Interagency Coordination Center Predictive Services

Click on the following images for direct links to the maps.



For additional fuels information visit <https://akff.mesowest.org/>

Sources: AICC Predictive Services – Fuels/Fire Danger web page, Alaska Fire & Fuels web page

The Coffee Brief is posted at PLs 4 and 5 only.

