



Coffee Brief

Date: June 24, 2022

Preparedness Levels & Alaska Fire Activity

Alaska	4
National	2

Light Initial Attack Activity New Fires and Acres: 8 Fires

There are currently 23 staffed fires with an estimated 431 personnel. Yesterday's large fire growth was ~66,000 acres.

Sources: National and AICC Situation Report

Resources

Aviation within Alaska	
Jumpship	5
Air Tactical	5
Air Tankers	3
Scoopers	4
SEATS	13
Utility	9
T1 Helicopter	
T2 Helicopter	11
T3 Helicopter	6

Crews Committed within Alaska		
Type 1	1	AK
Type 2	1	AK
Type 21A	3	AK
Module	2	AK
Type 1	10	L-48
Type 2		L-48
Type 21A		L-48
Module	1	L-48
Total Crews	18	

AVIATION: 27 SMJ's available ~ 64 SMJ's committed.

CREWS: 5 additional crews are tentatively scheduled to arrive from the lower 48 on 6/26.

MISCELLANEOUS:

2 CL-415's expected to arrive today from the lower 48.

1 jump ship and 1 ASM ordered for AFS from the lower 48.

An additional FB group ordered by DOF for SWS.

10 additional SMKJ boosters from the lower 48 over the next couple days.

NV IMT3 Team 4 is currently in command of the Fish Incident.

AK IMT2 Lawson is currently in command of the Clear Incident.

AK IMT2 Black Team is currently in command of the Lime Complex.

AK IMT2 Green Team is currently in command of the East Fork incident.

Source: IROC Reports

Weather Summary

Today, a couple of weak troughs are moving from west to east through northern Alaska. The brunt of the moisture will stay on the northwest coast, keeping cool, damp weather in there again today. This will also bring some cooler temperatures to much of the Interior for the next few days with highs around 70 in most areas.

Meanwhile, high pressure building into southern Alaska will expand and strengthen as the weekend approaches. This will bring hot, dry weather to much of the south and east. Today, highs in South Central will be in the mid 80s, with RH values in the low to mid 20s. Those hot temperatures will expand into the Interior by Saturday, setting up most of the state for a significant heating and drying trend.

The exception will be along the west coast, where a low coming into the Bering sea will attempt to bring in moisture and winds for the weekend. At this point, it doesn't look like the rain will get very far inland, but the winds might. So the question arises as to whether this storm will help to dissipate or enhance fire activity!

The area of thunderstorm coverage will shrink this afternoon and continue to do so for the next few days. Expect most storms to be found over the southeast Interior, around South Central in the Susitna Valley, the Talkeetna Mountains, and Copper River Basin.

In the longer term, the high pressure system in the south is expected to build and shift eastward over the ALCAN border. This will bring widespread temperatures 5 to 10 degrees above normal and suppress shower and thunderstorm activity into the middle of next week.

Source: Alaska 7-Day Outlook

Fuels/Fire Potential

Surface fuels continue to be near extreme values across the central and northeast Interior, the Kenai Peninsula, and Copper River. Southwest Alaska is still experiencing growth on existing fires due to dryness of live fuels which is not captured in FFMC.

Subsurface drying has been the main driver of fire spread recently. The Duff Moisture Code (DMC), which is the main component of the Buildup Index (BUI) this time of year, is at extremely dry levels across areas of the Interior, Southwest, South Central and the Kenai. The dry duff layers increase fireline intensity and resistance to control, requiring more time and effort to manage. South Central currently does not have large fires, but fuels are conducive to support spruce-driven fire spread with any new ignitions there.

Prolonged warming and drying will increase the Buildup Indices (BUIs) across greater areas of Alaska and continue to support large fire growth across the state.

Source: Alaska 7-Day Outlook

Fuels Status [Alaska Fire and Fuels Map](#)

A Fuels and Fire Behavior Advisory has been issued for Alaska.

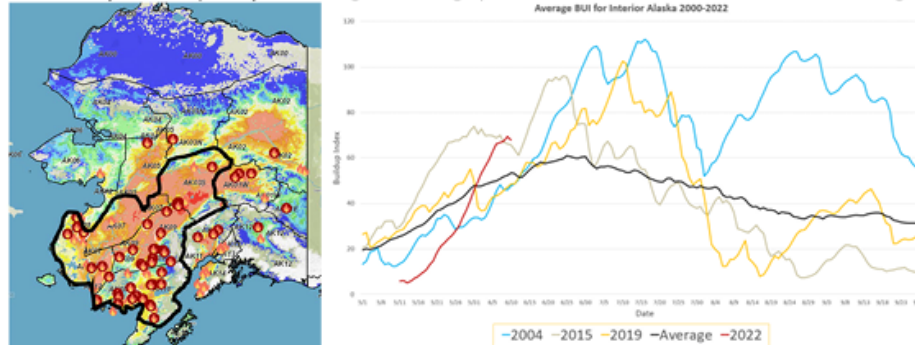
Fuels and Fire Behavior Advisory Southwest and Central Interior Alaska

Valid: June 12 – June 25, 2022

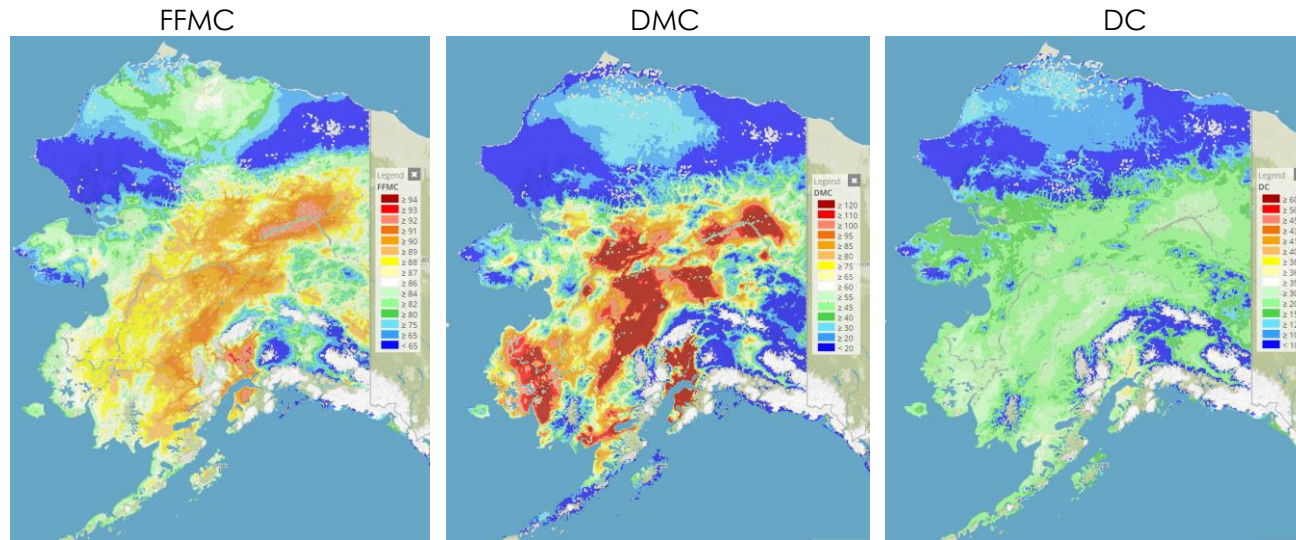
Subject: Exceptional landscape flammability and widespread ongoing large fire growth.

Discussion: The Buildup Index (BUI) is the best indicator of seasonal severity and overall flammability of fuels in Alaska. It represents deeper drying in the duff layers and greater fuel availability. Large fire growth occurs from mid-June to mid-July surrounding the summer solstice when long days and rapid drying can produce elevated BUI levels. Southwest Alaska normally experiences shorter periods of high flammability as they are prone to intermittent rain due to marine influences. Beginning in the middle of May, southwest Alaska has experienced continued hot, dry, and windy conditions, drying out fuels, retarding green-up and producing significant large fire growth. Many fires in southwest Alaska have experienced exceptionally large fire growth over the last week, which is unusual for the area.

Difference from normal conditions: The attached graph shows the current 2022 BUI trend for the Interior of Alaska compared to other busy fire seasons. 2022 has been above average BUI since May 31, and higher than 2015 levels since June 6. Southwest Alaska has already experienced abnormally large fire growth for this time of year. Multiple days of wetting rain adding up to more than one inch will be needed for lasting relief.



Click on the following images for direct links to the maps.



For additional fuels information visit <https://akff.mesowest.org/>

Sources: AICC Predictive Services – Fuels/Fire Danger web page, Alaska Fire & Fuels web page

Prioritized Incident Details

New and emerging initial attack within Alaska is #1																	
Priority	Unit	Seq. #	Incident	Descriptive Location	Size in Acres	48 hr. Change	% Contained/ Completed	Expected Contain/ Complete Date	Suppression Strategy	Complexity/IC	Total Personnel	Crews Assigned			Helicopters Assigned		
												T-1	T2	T2IA	T-1	T-2	T-3
2	AK-SWS	899	Lime Complex	E. of Chuathbaluk, AK	518,710.0	24,680.0	0%	7/16	Comp	IMT2 / Butteri	213	2		1			1
3	AK-DNR	346	Clear		1,931.0		5%	7/6	Comp	IMT2 / Lawson	97	2		1			2
4	AK-TAD	327	Hutlinana	E. of Manley Hot Springs	389.0		0%	8/31	Ctn		54	2					
5	AK-DNR	349	Minto Lakes		640.0												
6	ANC SA	351	Boulder		381,808.0	(18.5)			Ctn		8						
7	AK-DNR	46	Tanana		0.1				CTN								
8	AK-TAD	315	Chitanana		624.0				Comp								
9	AKY DR	160	East Fork		166,760.0				Comp	IMT2 / Green Team	116	1				2	
10	AK-TAD	319	Fish	SE of Bettles, AK	166.0		1%	8/30	Comp	IMT3	73	2				1	1

Source: AMAC Incident Prioritization List, ICS-209s

The Coffee Brief is posted at PLs 4 and 5 only.

