



## Coffee Brief

**Date: July 11, 2022**

### Preparedness Levels & Alaska Fire Activity

Alaska	5
National	2

Light Initial Attack Activity New Fires and Acres: 15 fires for 84 acres
---

There are currently 17 staffed fires and 6 Complexes. Yesterday's large fire growth was ~155,912 acres

#244/Lime Complex: AA-0AK responded with WA FB's

Bean Complex: ASM-A4, FB-208/209/205/210

#499(FAS): AA-0AX reconned this fire in the morning

#525(TAD): Rolled 1 load SMKJs, S-260/262/284, FB-211/214/216/217

#538(GAD): Rolled partial load on J-90 out of MCG, AA-1BR and S-261/263

#541(KKS): Requested BD-125 and BC FB's but canceled them before they arrived on scene

#543(TAD): 1 load SMKJs

Sources: National and AICC Situation Report, AICC Aircraft Logs

## Prioritized Incident Details

Priority	Unit	Seq. #	Incident	Descriptive Location	Size in Acres	Yesterday's Acres	Change Since Last 209	% Contained/C completed	Expected Contain/Complete Date	Suppression Strategy	Complexity (Incident Management Organization)	IC	Total Personnel	Crews Assigned			Helicopters Assigned		
														T-1	T2	T2IA	T-1	T-2	T-3
2	AKFAS	346	Clear	10 NM from City of Anderson along the Teklanika River	69,748.0	65,884.0	3,864.0	18%	7/30	Point Zone	Type 2 Team	Al Lawson - IC Nathan Rabe - Deputy IC	546	6	3	5	1	2	1
3	AKFAS	349	Minto Lakes	Minto Lakes/Chatanika River	37,523.0	35,367.0	2,156.0	0%	7/30	Point Zone	Type 1 Team	Jerry McGowan IC, Ken Kempler Deputy IC	309	1	5	1		1	1
4	AKTAD	898	Bean Complex	West of Fairbanks, some fires up 130 miles.	172,268.0	155,302.0	16,966.0	0%	10/1	Various	Type 2 Team	Nathan LeFevre, ICT2 Eric Knerr, DPIC Chris Orr, ICT2-1	228	2	1	1		1	1
5	AKDAS	894	Middle Tanana Complex	Nearest community is Delta, Alaska	50,550.3	30,526.3	20,024.0	0%	10/31	Various	Type 2 Team	Almas, Northern Rockies Team 3	161	4	6			3	3
6	AKSWS	899	Lime Complex	Sleetmute to King Salmon, Napalmute to Port Alsworth	829,629.0	785,539.0	44,090.0	35%	8/1	Various	Type 2 Team	IC Butteri	155					3	2
7	AKTAD	896	Dalton Highway Complex	0.5-5 miles off the Dalton Highway & East of Rampart AK	82,860.0	75,722.0	7,138.0	0%	8/31	Various	Type 3 Team	McCowan GB Idaho Team 1	91		1			1	1
8	AKTAD	893	Paradise Complex	6 miles southwest of Lake Minchumina, AK	246,682.5	237,989.2	8,693.3	0%	9/1	Various	Type 3 IC	D. Jones, E Karp(f)	52	1				2	
9	AKGAD	897	Poorman Complex	Ruby, AK is the closest civilization.	70,807.0	55,504.0	15,303.0	0%	8/1	Point Zone	Type 3 Team	Mitch Ketron ICT3	96	2					1
10	AKTAD	431	Slathtouka	19 miles southwest of Allakaket, AK.	4,190.7	2,564.4	1,626.3	1%	9/30	Point Zone	Type 3 Team	unknown	44	2	1			1	
11	AKFAS	499	Little Chena River	unknown	33.8		33.8	0%	1/0	Point Zone	unknown	Prax, E	0						
12	AKUYD	444	Bearman	25 miles northwest of Fort Yukon, AK	206.9	193.9	13.0	0%	10/1	Point Zone	Type 3 IC	unknown	36	1					

Source: AMAC Incident Prioritization List, ICS-209s

## Resources

Aviation within Alaska	Total
Smokeumper	6
Air Tactical	13
Air Tankers	5
Scoopers	26
Utility	8
Helicopter, Type 1	2
Helicopter, Type 2	20
Helicopter, Type 3 Standard	12
UAS	4
<b>Total Aircraft</b>	<b>96</b>

Crews Committed within Alaska	Total
Type2IA	14
Type 1	22
Type 2	9
Type 1 Module	8
Type 2 Module	9
<b>Total Crews</b>	<b>62</b>

Incident Mangement Teams in Alaska	Total
CIMT	
IMT 1	2
IMT2	5
IMT3	4
<b>Total IMTs</b>	<b>11</b>

## **AVIATION**

J-07 mobilizing Crow Peak Helitack > GAL today  
1EB demobilizing 7 pax ILI > PAQ today

## **AIRSPACE/TFRs**

2/7355 Minto Lakes  
2/6808 Lime complex  
2/8031 Clear  
2/9217 Little Chena River  
2/7505 Gold Hub

## **SMOKEJUMPERS**

Anticipated smokejumpers available: 25-30  
~ 112 SMKJ's committed + 3 as single resources (3 boat operators)

### [Smokejumper Demobilizations](#)

Yesterday: UYD: 458(8); 461(1-Beni); 528 (11, plus 1 > 444 as DIVS); TAD: Bean(1); 335(4); 509(4); TAS: 522(12); SWS: 531(7)  
Planned for today: TAD: 521(4)

## **CREWS**

Gannet Glacier available today ~July 11

Midnight Suns back on base. Admin 11th and two days off 12-13th, back i/s 7/14

North Stars back on base, availability Unknown

5 additional T2IA crews ordered for 7/13

## **NICC JET MOVEMENT**

7/10 - Jet #2 - Departure of Jet #2 out of FBK

Redmond IHC  
Prineville IHC  
La Grande IHC  
Vale IHC

## 7/11 - Jet #9 Arriving

NW - CGF  
Mt. Baker T2IA  
OWF Methow  
UMF - VET  
Crew 2 FWF NWR 2 – Fremont

Jet #9  
Tentative Split  
2 - AFS  
3 - DOF

## OVERHEAD/TEAMS

- 56 pending overhead requests
- Anticipating replacement IMT orders for TAD Zone fires 2-T3 and 1-T2
- The prepositioned NW IMT2 is being assigned to the Lime Complex. In brief will be 10 a.m. on July 12th

Source: IROC Reports, [National Smokejumper Status Report](#), AK Incident Aircraft Tracking Spreadsheet & AICC Documentation

## Weather Summary

...RED FLAG WARNING...

Abundant lightning over dry fuels for the central and eastern Interior through Sunday

Thunderstorms will develop over much of Mainland AK again today, and with several thousand strikes daily there continues to be a good chance of new ignitions in the very dry fuels of Interior Alaska. Thus, the Red Flag Warning for abundant lightning in dry fuels is out for the central and eastern Interior again today, and expected to remain through Monday.

A series of easterly waves coming off the low in the Gulf of Alaska are working more moisture into the eastern corner of the state, including the Panhandle, Copper River Basin, and the upper and middle Tanana Valley. The amount of rain with these waves is questionable, but models indicate that several days of these events will bring sufficient precipitation to those areas to moderate fire activity there. Some of this moisture will also work into South Central and Southwest, though most of that rain is expected along coastal areas.

By Tuesday, a significant pattern change is afoot, and more short waves will begin moving across the state from west to east, ushering in cooler and damper weather for most of the state. This westerly flow will bring ever-wetter waves of precipitation, perhaps providing a longer-term reprieve to the fire season.

Source: Alaska 7-Day Outlook

## Fuels/Fire Potential

FFMC values in the eastern Interior have taken some moisture, with more in the forecast for the next few days. This is creating a mosaic of fuel dryness on the landscape, and indicates a reduction in fire spread potential in eastern Alaska. In the central and western Interior, FFMCs indicate high spread potential, assuming good ventilation and relatively smoke-free skies.

Subsurface drying is the main driver of fire spread. The Buildup Index (BUI) is a combination of Duff Moisture Code (DMC) and Drought Code (DC), which describe the mid and deep layers of duff. During this portion of the fire season, fires can now be carried by the deepest fuel layers. Several days of rains may not be enough to stop fire activity as fires will continue to burn underground. Deeper burning fires challenge containment and control efforts, and also create holdover lightning ignitions that are discovered days later. Current BUI values are at or near record values for much of the Interior and South Central. Even though the forecast is for increasing precipitation across a wide portion of the landscape this week, it will take more than an inch of rain over several days to significantly alter this fire season.

***When encountering a mismatch between a point value based on actual weather observations and the background grid, please discount the grid and go with the points.***

*Source: Alaska 7-Day Outlook*

---

Fuels Status [Alaska Fire and Fuels Map](#)

**[A Fuels and Fire Behavior Advisory was Issued 7/8/2022](#)**

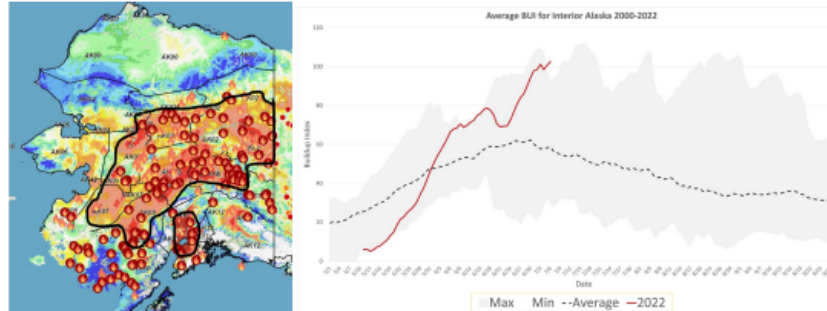
## Fuels and Fire Behavior Advisory Interior and South Central Alaska

Valid: July 8 – July 22, 2022

**Subject:** Exceptional landscape flammability and widespread large fire growth.

**Discussion:** The Buildup Index (BUI) is the best indicator of seasonal severity and overall flammability of fuels in Alaska. It represents deeper drying in the duff layers and greater fuel availability. Large fire growth occurs from mid-June to mid-July surrounding the summer solstice when long days and rapid drying can produce elevated BUIs. Southwest Alaska experienced an exceptionally busy June with over one million acres burned. By mid-June fire activity began to spread eastward across the Interior. Numerous fires are now burning in the central and eastern Interior. South Central has been drying rapidly and BUIs are now at record levels.

**Difference from normal conditions:** The attached graph shows the current 2022 BUI trend for the Interior of Alaska compared to climatological norms since 2000. 2022 has been above average BUI since May 31 and is currently at record-setting values. Convective precipitation has moderated BUI values in some areas, but mid and deeper sub-surface fuels remain extremely dry. Much of the landscape has experienced continuous large fire growth. Fuels that are normally barriers to fire spread, such as old fire scars and hardwood stands, have been experiencing increased fire behavior. Multiple days of wetting rain adding up to more than one inch will be needed.



### Concerns to Firefighters and the Public:

- Spruce stands are extremely flammable, will ignite readily, exhibit rates of spread more than one mile per hour, torch, and spot prolifically up to ¼ mile or more, and exhibit intense crown fire behavior.
- Temperatures above 75 degrees and RH below 30% are important thresholds for rapid spread and crown fire behavior. Strong winds are not required for large fire growth.
- Long-term drying has stressed green fuels and is encouraging spread in old burn scars and less flammable hardwood forests. These fuel types are no longer barriers to fire spread.

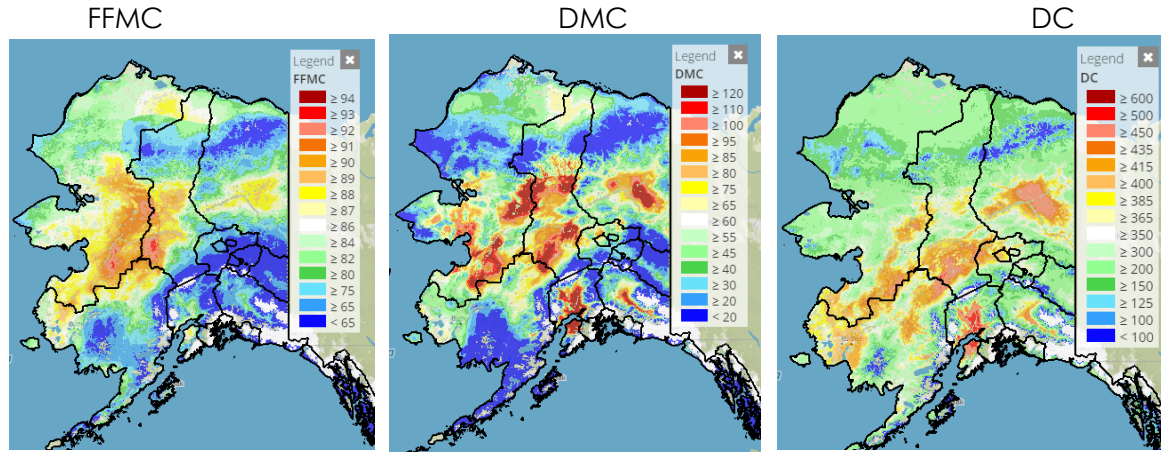
### Mitigation Measures:

- Ensure that you can recognize hazardous fuel types.
- Understand the triggers and thresholds for problem fire behavior.
- Monitor forecasts and indices to anticipate areas of increased flammability and extreme fire behavior.
- Maintain clear communications when working around active fires.

**Area of Concern:** Southwest, Central and Eastern Interior, and South Central Alaska

**Issued By:** Alaska Interagency Coordination Center Predictive Services

Click on the following images for direct links to the maps.



For additional fuels information visit <https://akff.mesowest.org/>

Sources: AICC Predictive Services – Fuels/Fire Danger web page, Alaska Fire & Fuels web page

The Coffee Brief is posted at PLs 4 and 5 only.

