



## Coffee Brief

**Date: July 13, 2022**

### Preparedness Levels & Alaska Fire Activity

Alaska	5
National	3

Light Initial Attack Activity New Fires and Acres: 10 fires for 150 acres
--

There are currently 17 staffed fires and 6 Complexes. Yesterday's large fire growth was ~93,209 acres

- #561(TAD): 1 load SMKJs, T-101, T-162, T-52, T-544, ASM-A4, ASM-B61, diverted S-260/262/284 who were originally ordered to 556, FB-211/214/205/208/209, B-7
- #556(TAD): AA-0AX, AA-1MZ, FB-205/208/209/216/217, S-284
- #325/380(GAD): 1BR flew recon of these fires
- #310/Bean(TAD): S-260/262
- #552(GAL): AA-1BR, S-261/263
- #569(UYD): 1 load SMKJs, AA-0AX, FB-205/217, S-284

Sources: National and AICC Situation Report, AICC Aircraft Logs

## Prioritized Incident Details

Priority	Unit	Seq. #	Incident	Descriptive Location	Size in Acres	Yesterday's Acres	Change Since Last 209	% Contained/C completed	Expected Contain/Complete Date	Suppression Strategy	Complexity (Incident Management Organization)	IC	Total Personnel	Crews Assigned			Helicopters Assigned		
														T-1	T2	T2IA	T-1	T-2	T-3
2	AKFAS	346	Clear	10 NM from City of Anderson along the Teklanika River	70,613.0	65,884.0	4,729.0	22%	7/30	Point Zone	Type 2 Team	Al Lawson - IC Nathan Rabe - Deputy IC	579	7	2	5	1	2	1
3	AKFAS	349	Minto Lakes	Minto Lakes/Chatanika River	37,523.0	35,367.0	2,156.0	52%	7/30	Point Zone	Type 1 Team	Jerry McGowan IC, Ken Kempter Deputy IC	349	1	4	1		1	1
4	AKTAD	898	Bean Complex	West of Fairbanks, some fires up to 130 miles.	178,582.0	155,302.0	23,280.0	0%	10/1	Various	Type 2 Team	Nathan LeFevre, ICT2 Eric Knerr, DPIC Chris Orr, ICT2-t	268	2	1	1		1	1
5	AKDAS	894	Middle Tanana Complex	Nearest community is Delta, Alaska	57,934.3	30,526.3	27,408.0	0%	10/31	Various	Type 2 Team	Almas, Northern Rockies Team 3	174	4	4			2	2
6	AKTAD	896	Dalton Highway Complex	0.5-5 miles off the Dalton Highway & East of Rampart AK	85,148.0	75,722.0	9,426.0	0%	8/31	Various	Type 3 Team	McCowan GB Idaho Team 1	91	1				1	1
7	AKGAD	897	Poorman Complex	Ruby, AK is the closest civilization.	103,381.0	55,504.0	47,877.0	0%	8/1	Various	Type 3 Team	Mitch Ketron ICT3	97	2					1
8	AKSWS	899	Lime Complex	Sleetmute to King Salmon, Napaimute to Port Alsworth	865,620.0	785,539.0	80,081.0	38%	8/1	Various	Type 2 Team	IC Butteri	150		2			3	2
9	AKTAD	893	Paradise Complex	6 miles southwest of Lake Minchumina, AK	264,790.0	237,989.2	26,800.8	0%	9/1	Point Zone	Type 3 IC	D. Jones, E Karp(t)	79	2	1				2
10	AKTAD	431	Slathtouka	19 miles southwest of Allakaket, AK.	8,500.0	2,564.4	5,935.6	1%	9/30	Point Zone	Type 3 Team	Andrew Stenbeck / Clint Desautel (t)	61	1	1				
11	AKFAS	499	Little Chena River	Little Chena River / Fish Creek	122.3	33.8	88.5	5%	7/31	Point Zone	Type 3 IC	Prax, E	106	6	2				

Source: AMAC Incident Prioritization List, ICS-209s

## Resources

Aviation within Alaska	Total
Smokeumper	6
Air Tactical	14
Air Tankers	5
Scoopers	23
Utility	9
Helicopter, Type 1	2
Helicopter, Type 2	21
Helicopter, Type 3 Standard	14
UAS	2
<b>Total Aircraft</b>	<b>96</b>

Crews Committed within Alaska	Total
Type2IA	18
Type 1	22
Type 2	8
Type 1 Module	7
Type 2 Module	8
<b>Total Crews</b>	<b>63</b>

Incident Mangement Teams in Alaska	Total
CIMT	
IMT 1	2
IMT2	6
IMT3	4
<b>Total IMTs</b>	<b>12</b>

## **AVIATION**

AA-7GB recovered PAQ

J-62 arrived

S-281, 282, 283 are still in JNU - will make a break for FBK tomorrow, weather permitting

B-4 back from days off

## **AIRSPACE/TFRs**

2/7355 Minto Lakes

2/6808 Lime complex

2/8031 Clear

2/9217 Little Chena River

2/7505 Gold Hub

## **SMOKEJUMPERS**

Anticipated smokejumpers available: 10

~ 95 SMKJ's committed + 1 as single resource (DIVS #444)

### Smokejumper Demobilizations

Yesterday: UYD: 559(4); 523(6); 525(6); Dalton Complex (8?); Bean Complex (4?)

Planned for today: 525(5); 395(4); 538(7)

## **CREWS**

Canceled Jet #10 with the 5 incoming T21A crews for today

Midnight Suns estimated availability 7/14

Chenas demobilized #225 yesterday, availability unknown

North Stars estimated availability Unknown

## **NICC JET MOVEMENT**

7/13 - Jet #10 arriving

Cancelled

## OVERHEAD/TEAMS

- 50 pending overhead requests
- Bean Complex – 7/14 @ 1400 in brief NR Connell IMT2, transfer command 7/17 @ 0700
- Lime Complex - NW IMT2 9 transfer command 7/17 @ 0700

IMT Name	Incident Name	Status	Mob Date	Duration	LWD	Notes
IMT2 - AK - Green	Lime Complex	At Incident	6/28/2022	15	7/13/2022	IMT2- NW - Team 9
IMT2 - NW - Team 7	Bean Complex	At Incident	6/23/2022	23	7/16/2022	
IMT2 - NW - Team 10	Clear	At Incident	6/24/2022	21	7/15/2022	
IMT3 - Central Oregon Team 2	Gardiner Creek	At Incident	6/24/2022	21	7/15/2022	
IMT2 - NR - Almas	Middle Tanana Comple	At Incident	6/27/2022	20	7/17/2022	
IMT3 - NEWICC	Slathtouka	At Incident	6/27/2022	21	7/18/2022	
IMT1 - CA - McGowan	Minto Lakes	At Incident	7/1/2022	21	7/22/2022	
IMT3 - ID Team 1	Dalton Hwy Complex	At Incident	7/1/2022	14	7/15/2022	Not extending
IMT3 - SA - Gray	Poorman	At Incident	7/1/2022	15	7/16/2022	
IMT2- NW - Team 9	Lime Complex	At Incident	7/1/2022	21	7/22/2022	in brief 7/12 @ 1000
IMT3 - AK - Wengert	Bearman	At Incident	7/2/2022	21	7/23/2022	
IMT1 - NR -	Clear	Reserved				
IMT3 - Karp(t)	Paradise Complex					
IMT2 - NR - Connell	Bean Complex	Reserved				7/11 received request
IMT2 - request for replacement	Dalton Hwy Complex					Sumbitted IMT2 request

Source: IROC Reports, [National Smokejumper Status Report](#), AK Incident Aircraft Tracking Spreadsheet & AICC Documentation, 2022 IMT Tracking Report

## Weather Summary

Ridging is being pushed out of the state by the long wave trough which is dropped its first front down into northwest Alaska yesterday. This front will cross the state over the next few days, bringing much cooler temperatures and a chance for increased shower activity as it moves from west to east.

The last in a series of easterly waves coming off the low in the Gulf of Alaska has stalled over the southeastern Interior and will bring up to another inch of rain along the Alaska Range.

A separate frontal system is moving into Southwest AK as it spins off of a low in Bristol Bay. Rainfall will start along the coast, but is expected to move inland today. The energy from this system will then combine with that of the front dropping down from the northwest and what's left of the easterly wave over the southeast Interior and bring increased likelihood for wetting rains over South Central tonight.

The long wave trough will dominate the state this week, bringing cooler and damper weather for most of the state. Southern Alaska will have a series of more defined shortwave ridges that intersperse with the troughs, allowing for more sunshine in between showery events. Overall, this week is likely to be a slowing period for most fires.

Source: Alaska 7-Day Outlook

## Fuels/Fire Potential

FFMC values in the eastern Interior have taken some moisture, with more in the forecast for the next few days. This is creating a mosaic of fuel dryness on the landscape, and indicates a reduction in fire spread potential in eastern Alaska. In the central and western Interior, FFMCs indicate high spread potential, assuming good ventilation and relatively smoke-free skies.

Subsurface drying is the main driver of fire spread. The Buildup Index (BUI) is a combination of Duff Moisture Code (DMC) and Drought Code (DC), which describe the mid and deep layers of duff. During this portion of the fire season, fires can now be carried by the deepest fuel layers. Several days of rains may not be enough to stop fire activity as fires will continue to burn underground. Deeper burning fires challenge containment and control efforts, and also create holdover lightning ignitions that are discovered days later. Current BUI values are at or near record values for much of the Interior and South Central. Even though the forecast is for increasing precipitation across a wide portion of the landscape this week, it will take more than an inch of rain over several days to significantly alter this fire season.

***When encountering a mismatch between a point value based on actual weather observations and the background grid, please discount the grid and go with the points.***

*Source: Alaska 7-Day Outlook*

Fuels Status [Alaska Fire and Fuels Map](#)

**[A Fuels and Fire Behavior Advisory was Issued 7/8/2022](#)**

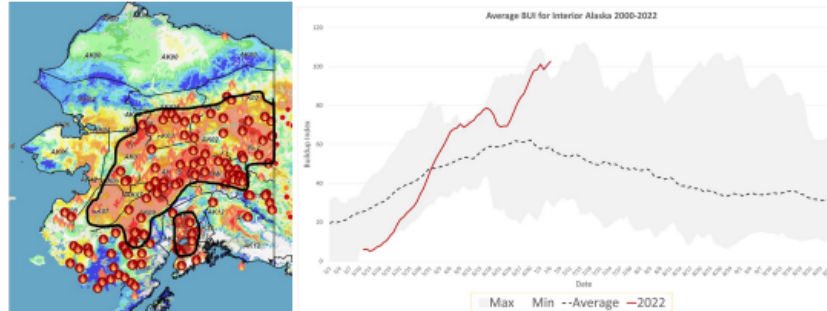
## Fuels and Fire Behavior Advisory Interior and South Central Alaska

Valid: July 8 – July 22, 2022

**Subject:** Exceptional landscape flammability and widespread large fire growth.

**Discussion:** The Buildup Index (BUI) is the best indicator of seasonal severity and overall flammability of fuels in Alaska. It represents deeper drying in the duff layers and greater fuel availability. Large fire growth occurs from mid-June to mid-July surrounding the summer solstice when long days and rapid drying can produce elevated BUIs. Southwest Alaska experienced an exceptionally busy June with over one million acres burned. By mid-June fire activity began to spread eastward across the Interior. Numerous fires are now burning in the central and eastern Interior. South Central has been drying rapidly and BUIs are now at record levels.

**Difference from normal conditions:** The attached graph shows the current 2022 BUI trend for the Interior of Alaska compared to climatological norms since 2000. 2022 has been above average BUI since May 31 and is currently at record-setting values. Convective precipitation has moderated BUI values in some areas, but mid and deeper sub-surface fuels remain extremely dry. Much of the landscape has experienced continuous large fire growth. Fuels that are normally barriers to fire spread, such as old fire scars and hardwood stands, have been experiencing increased fire behavior. Multiple days of wetting rain adding up to more than one inch will be needed.



### Concerns to Firefighters and the Public:

- Spruce stands are extremely flammable, will ignite readily, exhibit rates of spread more than one mile per hour, torch, and spot prolifically up to ¼ mile or more, and exhibit intense crown fire behavior.
- Temperatures above 75 degrees and RH below 30% are important thresholds for rapid spread and crown fire behavior. Strong winds are not required for large fire growth.
- Long-term drying has stressed green fuels and is encouraging spread in old burn scars and less flammable hardwood forests. These fuel types are no longer barriers to fire spread.

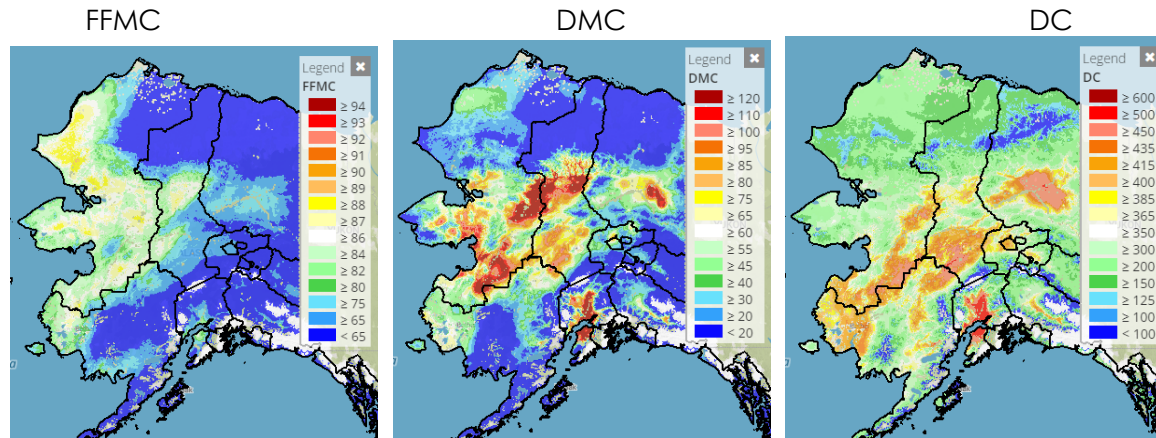
### Mitigation Measures:

- Ensure that you can recognize hazardous fuel types.
- Understand the triggers and thresholds for problem fire behavior.
- Monitor forecasts and indices to anticipate areas of increased flammability and extreme fire behavior.
- Maintain clear communications when working around active fires.

**Area of Concern:** Southwest, Central and Eastern Interior, and South Central Alaska

**Issued By:** Alaska Interagency Coordination Center Predictive Services

Click on the following images for direct links to the maps.



For additional fuels information visit <https://akff.mesowest.org/>

Sources: AICC Predictive Services – Fuels/Fire Danger web page, Alaska Fire & Fuels web page

The Coffee Brief is posted at PLs 4 and 5 only.

