



Coffee Brief

Date: July 15, 2022

Preparedness Levels & Alaska Fire Activity

Alaska	4
National	3

Light Initial Attack Activity New Fires and Acres: 3 fires for 15.2 acres
--

There are currently 13 staffed fires and 6 Complexes. Yesterday's large fire growth was ~38,179 acres

#555 (TAD): AA-0AX x2, FB-205/210, FB-211/214 x2, FB-216/217 x2, FB-208/209 x2, AA-1MZ, AA-7GB

#566 (TAD): B-4 x2, S-283/284, J-92 dropped 8, J-90 dropped 4, J-17 dropped 8. S-281/282, T-101, T-52, B-7, S-261/263, S-260/262, B-6-1

#574 (SWS): ordered AA, but AA-7GB did not lift due to WX over the fire area

#571 (SWS): AA-0AK x2 then recovered PAQ

#552/576/500/551 (GAL): AA-1BR reconned (essentially) the whole GAD zone

#561 (TAD): B-6-1, FB-216/217 were diverted to 561 from 555

#564 (TAD): J-90 dropped 8

#578 (FAF): AA-0AX could not find anything, diverted to 555 for relief AA

Sources: National and AICC Situation Report, AICC Aircraft Logs

Prioritized Incident Details

Priority	Unit	Seq. #	Incident	Descriptive Location	Size in Acres	Yesterday's Acres	Change Since Last 209	% Contained/C completed	Expected Contain/Complete Date	Suppression Strategy	Complexity (Incident Management Organization)	IC	Total Personnel	Crews Assigned			Helicopters Assigned		
														T-1	T2	T2IA	T-1	T-2	T-3
2	AKFAS	346	Clear	10 NM from City of Anderson along the Teklanika River	71,113.0	70,896.0	217.0	56%	7/30	Point Zone	Type 2 Team	Al Lawson - IC Nathan Rabe - Deputy IC	552	7	2	5	1	2	1
3	AKFAS	349	Minto Lakes	Minto Lakes/Chatanika River	37,551.0	37,523.0	28.0	52%	7/30	Point Zone	Type 1 Team	Jerry McGowan IC, Ken Kempter Deputy IC	284	1	4			1	1
4	AKTAD	898	Bean Complex	West of Fairbanks, some fires up to 130 miles.	188,998.0	186,245.0	2,753.0	0%	10/1	Various	Type 2 Team	Nathan LeFevre, ICT2 Eric Kneer, DPIC Chris Orr, ICT2-t	255	2	3			1	1
5	AKDAS	894	Middle Tanana Complex Dalton Highway Complex	Nearest community is Delta, Alaska	57,934.3	57,934.3	-	0%	10/31	Various	Type 2 Team	Almas, Northern Rockies Team 3	139	2	6			2	2
6	AKTAD	896	Middle Tanana Complex Dalton Highway Complex	0.5-5 miles off the Dalton Highway & East of Rampart AK	90,810.0	86,938.0	3,872.0	0%	8/31	Various	Type 3 Team	McCowan GB Idaho Team 1	91		2			1	1
7	AKSWS	899	Lime Complex	Sleetmute to King Salmon, Napaimute to Port Alsworth	865,620.0	865,620.0	-	38%	8/1	Various	Type 2 Team	NW Team 9 IC - Tyson Albrecht	126		2			3	2
8	AKTAD	893	Paradise Complex	6 miles southwest of Lake Minchumina, AK	273,846.0	273,846.0	-	0%	9/1	Various	Type 3 IC	D. Jones, E Karp(t)	71	1	2				2
9	AKTAD	431	Slathtouka	19 miles southwest of Allakaket, AK.	8,500.0	8,500.0	-	40%	9/30	Point Zone	Type 3 Team	Andrew Stenbeck / Clint Desautel (t)	72	1	1				2
10	AKFAS	499	Little Chena River	Little Chena River / Fish Creek	122.3	122.3	-	15%	7/31	Point Zone	Type 3 IC	Prax, E	137	8	2		2	1	

Source: AMAC Incident Prioritization List, ICS-209s

Resources

Aviation within Alaska	Total
Smokeumper	6
Air Tactical	14
Air Tankers	5
Scoopers	26
Utility	9
Helicopter, Type 1	3
Helicopter, Type 2	22
Helicopter, Type 3 Standard	16
UAS	2
Total Aircraft	103

Crews Committed within Alaska	Total
Type2IA	17
Type 1	21
Type 2	5
Type 1 Module	5
Type 2 Module	7
Total Crews	55

Incident Mangement Teams in Alaska	Total
CIMT	
IMT 1	2
IMT2	7
IMT3	5
Total IMTs	14

AVIATION

A4 on days off today

J-90 on relief today

T101 will be off today

544 down for mechanical

T152 ended shift down for maintenance

AIRSPACE/TFRs

2/7355 Minto Lakes

2/6808 Lime complex

2/1171 Clear

2/9217 Little Chena River

2/9548 Gold Hub

SMOKEJUMPERS

Anticipated smokejumpers available: ~33

~ 82 SMKJ's committed + 1 as single resource (DIVS #444)

Smokejumper Demobilizations

Yesterday:

Planned for today:

CREWS

Chena IHC estimated availability 7/16 - no definitive assignment

North Stars estimated availability 7/17 - no definitive assignment

NICC JET MOVEMENT

TBD - Jet Departure

Flight requests for jet demobilizations 7/19 (Jet 3), 7/21 (Jet 4) & 7/22 (Jet 5)

Dalton IHC and possibly T1 IMT (McGowan) will be demobilizing commercially

OVERHEAD/TEAMS

- 64 pending overhead requests
- Clear – transition with IMT2 NR Goeller, today @ 1800
- Dalton Highway Complex - IMT2 Watkins #14 transition today, transfer command end of shift tomorrow
- Bean Complex – NR Connell IMT2, transfer command 7/17 @ 0700
- Middle Tanana - Transfer command to Bransford 7/18 0800

IMT Name	Incident Name	Status	Mob Date	Duration	LWD	Notes
IMT2 - NW - Team 10	Clear	At Incident	6/24/2022	21	7/15/2022	replace with Goeller
IMT3 - Central Oregon Team 2	Gardiner Creek	At Incident	6/24/2022	21	7/15/2022	no replacement
IMT3 - ID Team 1	Dalton Hwy Complex	At Incident	7/1/2022	14	7/15/2022	replace with Watkins
IMT3 - SA - Gray	Poorman	At Incident	7/1/2022	15	7/16/2022	no replacement
IMT2 - NW - Team 7	Bean Complex	At Incident	6/23/2022	23	7/16/2022	replace with Connell 7/16
IMT2 - NR - Almas	Middle Tanana	At Incident	6/27/2022	20	7/17/2022	IMT3 GVC Zone replacing 7/18
IMT3 - NEWICC	Slathtouka	At Incident	6/27/2022	21	7/18/2022	
IMT1 - CA - McGowan	Minto Lakes	At Incident	7/1/2022	21	7/22/2022	
IMT2 - NW - Team 9	Lime Complex	At Incident	7/1/2022	21	7/22/2022	
IMT3 - AK - Wengert	Bearman	At Incident	7/2/2022	21	7/23/2022	
IMT2 - NR - Goeller	Clear	At Incident	7/1/2022	21	7/23/2022	
IMT2 - NR - Connell	Bean Complex	At Incident	7/2/2022	21	8/4/2022	
IMT2 - CA 14 - Watkins	Dalton Highway	At Incident	7/14/2022	21	8/4/2022	
IMT3 - Bransford	Middle Tanana	Enroute	7/14/2022	21		
IMT3 - Karp(t)	Paradise Complex	At Incident	7/9/2022			

Source: IROC Reports, [National Smokejumper Status Report](#), AK Incident Aircraft Tracking Spreadsheet & AICC Documentation, 2022 IMT Tracking Report

Weather Summary

The previous weather regime that brought amazing outbreaks of lightning to Alaska earlier this week has moved out of the area. In its place, a cooler and more humid regime has taken hold, and the state of the atmosphere is no longer unstable enough to support meaningful development of thunderstorms. With westerly and southwesterly flow developing, temperatures statewide will remain at or below normal values for this time of year, and afternoon humidity will remain in the 30s or higher.

A secondary low pressure system tracking from west to east across the Gulf of Alaska will bring wetting rains to South Central Alaska Friday and Saturday, with no thunderstorms in the forecast.

In the longer term, a continued period of cool and moist weather is likely to continue into the first half of next week.

Source: Alaska 7-Day Outlook

Fuels/Fire Potential

FFMC values in the eastern Interior have taken some moisture, with more in the forecast for the next few days. This is creating a mosaic of fuel dryness on the landscape, and indicates a reduction in fire spread potential in eastern Alaska. In the central and western Interior, FFMCs indicate high spread potential, assuming good ventilation and relatively smoke-free skies.

Subsurface drying is the main driver of fire spread. The Buildup Index (BUI) is a combination of Duff Moisture Code (DMC) and Drought Code (DC), which describe the mid and deep layers of duff. During this portion of the fire season, fires can now be carried by the deepest fuel layers. Several days of rains may not be enough to stop fire activity as fires will continue to burn underground. Deeper burning fires challenge containment and control efforts, and also create holdover lightning ignitions that are discovered days later. Current BUI values are at or near record values for much of the Interior and South Central. Even though the forecast is for increasing precipitation across a wide portion of the landscape this week, it will take more than an inch of rain over several days to significantly alter this fire season.

When encountering a mismatch between a point value based on actual weather observations and the background grid, please discount the grid and go with the points.

Source: Alaska 7-Day Outlook

Fuels Status [Alaska Fire and Fuels Map](#)

[A Fuels and Fire Behavior Advisory was Issued 7/8/2022](#)

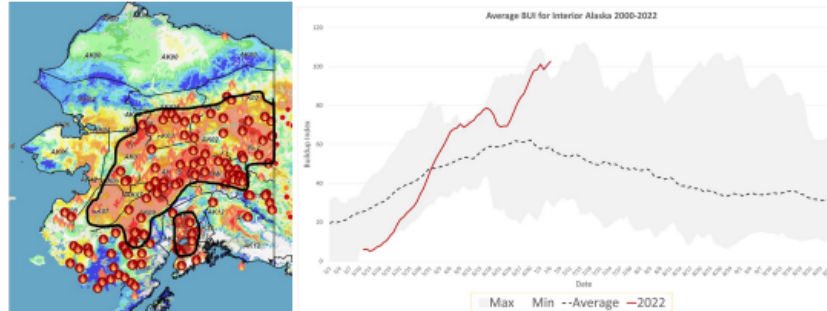
Fuels and Fire Behavior Advisory Interior and South Central Alaska

Valid: July 8 – July 22, 2022

Subject: Exceptional landscape flammability and widespread large fire growth.

Discussion: The Buildup Index (BUI) is the best indicator of seasonal severity and overall flammability of fuels in Alaska. It represents deeper drying in the duff layers and greater fuel availability. Large fire growth occurs from mid-June to mid-July surrounding the summer solstice when long days and rapid drying can produce elevated BUIs. Southwest Alaska experienced an exceptionally busy June with over one million acres burned. By mid-June fire activity began to spread eastward across the Interior. Numerous fires are now burning in the central and eastern Interior. South Central has been drying rapidly and BUIs are now at record levels.

Difference from normal conditions: The attached graph shows the current 2022 BUI trend for the Interior of Alaska compared to climatological norms since 2000. 2022 has been above average BUI since May 31 and is currently at record-setting values. Convective precipitation has moderated BUI values in some areas, but mid and deeper sub-surface fuels remain extremely dry. Much of the landscape has experienced continuous large fire growth. Fuels that are normally barriers to fire spread, such as old fire scars and hardwood stands, have been experiencing increased fire behavior. Multiple days of wetting rain adding up to more than one inch will be needed.



Concerns to Firefighters and the Public:

- Spruce stands are extremely flammable, will ignite readily, exhibit rates of spread more than one mile per hour, torch, and spot prolifically up to ¼ mile or more, and exhibit intense crown fire behavior.
- Temperatures above 75 degrees and RH below 30% are important thresholds for rapid spread and crown fire behavior. Strong winds are not required for large fire growth.
- Long-term drying has stressed green fuels and is encouraging spread in old burn scars and less flammable hardwood forests. These fuel types are no longer barriers to fire spread.

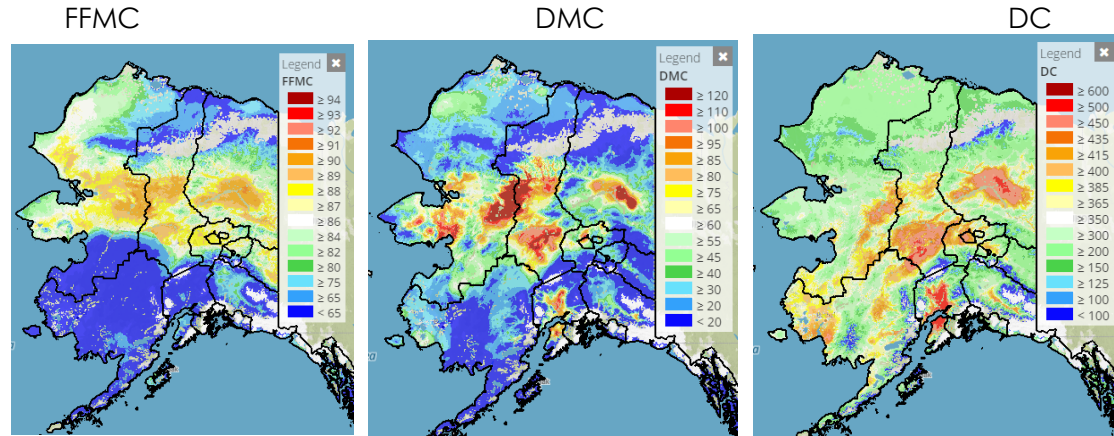
Mitigation Measures:

- Ensure that you can recognize hazardous fuel types.
- Understand the triggers and thresholds for problem fire behavior.
- Monitor forecasts and indices to anticipate areas of increased flammability and extreme fire behavior.
- Maintain clear communications when working around active fires.

Area of Concern: Southwest, Central and Eastern Interior, and South Central Alaska

Issued By: Alaska Interagency Coordination Center Predictive Services

Click on the following images for direct links to the maps.



For additional fuels information visit <https://akff.mesowest.org/>

Sources: AICC Predictive Services – Fuels/Fire Danger web page, Alaska Fire & Fuels web page

The Coffee Brief is posted at PLs 4 and 5 only.

