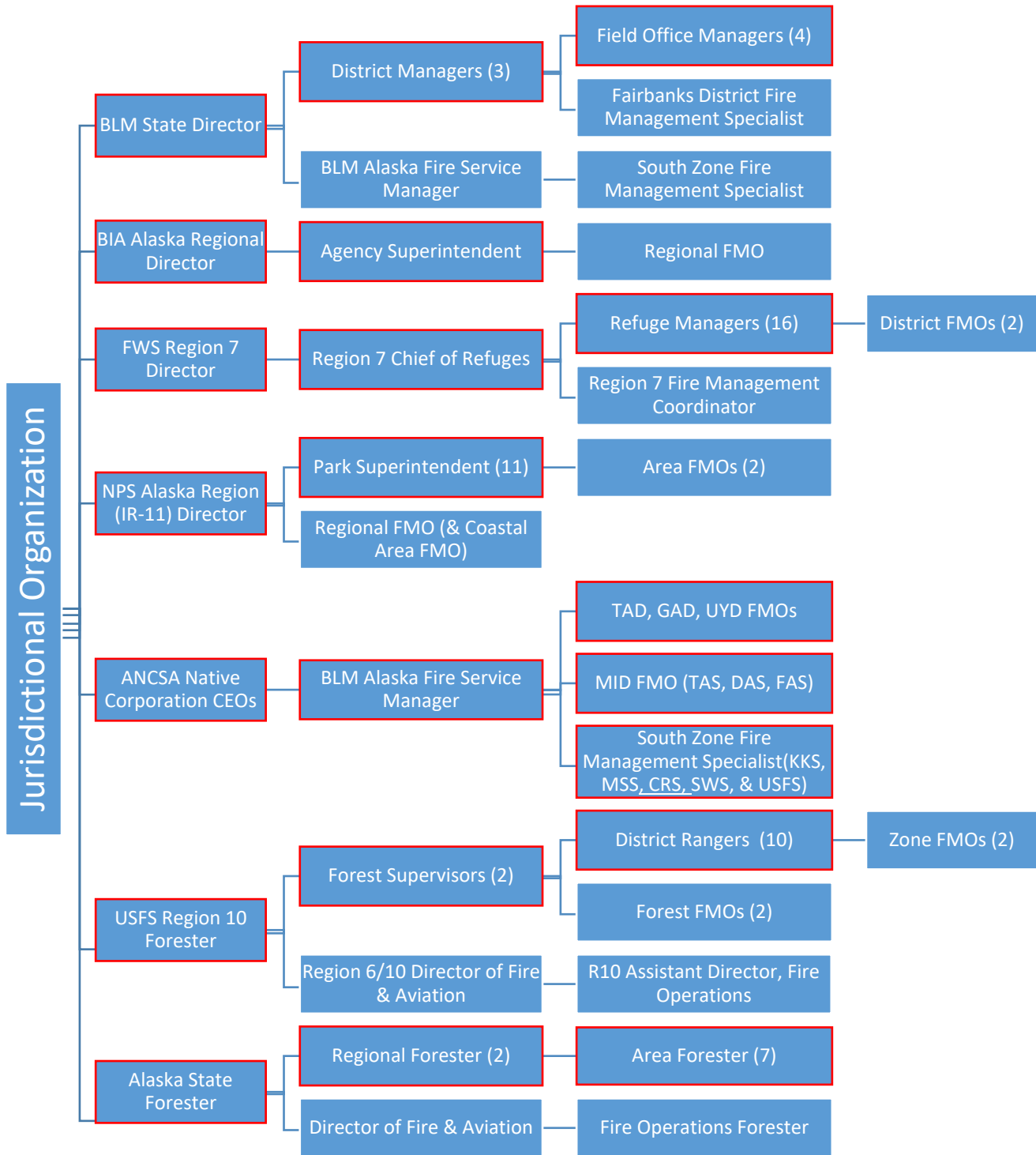


Attachment 5 Alaska Interagency Jurisdictional Fire Management Organizations

This chart summarizes lines of authority and does not represent complete agency organizations.



Red outline indicates jurisdictional line authority

Figure 3: Alaska Fire Management Jurisdictional Organizations

Table 16: Jurisdictional Agencies based on Ownership/Land Status

Jurisdictional Agency	Ownership/Land Status
<p>Alaska Department of Natural Resources¹</p>	<ul style="list-style-type: none"> • Alaska State managed lands including: <ul style="list-style-type: none"> ○ State Parks, Forests, Mental Health, and other state lands ○ State Critical Habitat Areas, Range Areas, Refuges and Sanctuaries (joint w/Alaska Department of Fish and Game) ○ Lands “Tentatively Approved” for conveyance to the state ○ DNR lands permitted or leased to another entity² • City, Borough and Municipality lands • Private fee simple lands
<p>Alaska Native Claims Settlement Act (ANCSA) Village and Regional Corporations (BLM-AFS may act as the Agency Administrator Representative, when necessary)</p>	<ul style="list-style-type: none"> • Patented or Interim Conveyed ANCSA Regional or Village Corporation lands • ANCSA lands permitted or leased to another entity²
<p>Bureau of Indian Affairs³</p>	<ul style="list-style-type: none"> • BIA managed lands including: <ul style="list-style-type: none"> ○ Restricted Native Allotments (patented or certificated) ○ Annette Island Indian Reservation ○ Other federally administered Indian trust lands including restricted title townsites
<p>Bureau of Land Management</p>	<ul style="list-style-type: none"> • BLM managed lands including: <ul style="list-style-type: none"> ○ National system of public lands as defined in Federal Land and Management Policy Act ○ National Conservation Areas ○ BLM Wild and Scenic Rivers ○ National Recreation Areas ○ National Petroleum Reserve-Alaska ○ BLM lands permitted or leased to another entity² ○ Native Allotment Applications (not yet patented or certificated) ○ ANCSA Regional or Village Corporation selected lands outside of National Parks, National Wildlife Refuges, and National Forests that are not conveyed, interim conveyed, or “Tentatively Approved” ○ State selected lands outside of National Parks, National Wildlife Refuges, and National Forests that are not conveyed or “Tentatively Approved”
<p>National Park Service</p>	<ul style="list-style-type: none"> • NPS managed lands including: <ul style="list-style-type: none"> ○ National Parks, Preserves, and Historical Parks ○ Aniakchak, Cape Krusenstern, & World War II Valor in the Pacific National Monuments ○ NPS Wild and Scenic Rivers ○ NPS lands permitted or leased to another entity² ○ ANCSA Regional or Village Corporation selected lands within National Parks, Preserves, Historical Parks, and Monuments that are not conveyed, interim conveyed, or “Tentatively Approved” ○ State selected lands within National Parks, Preserves, Historical Parks, and Monuments that are not conveyed or “Tentatively Approved”