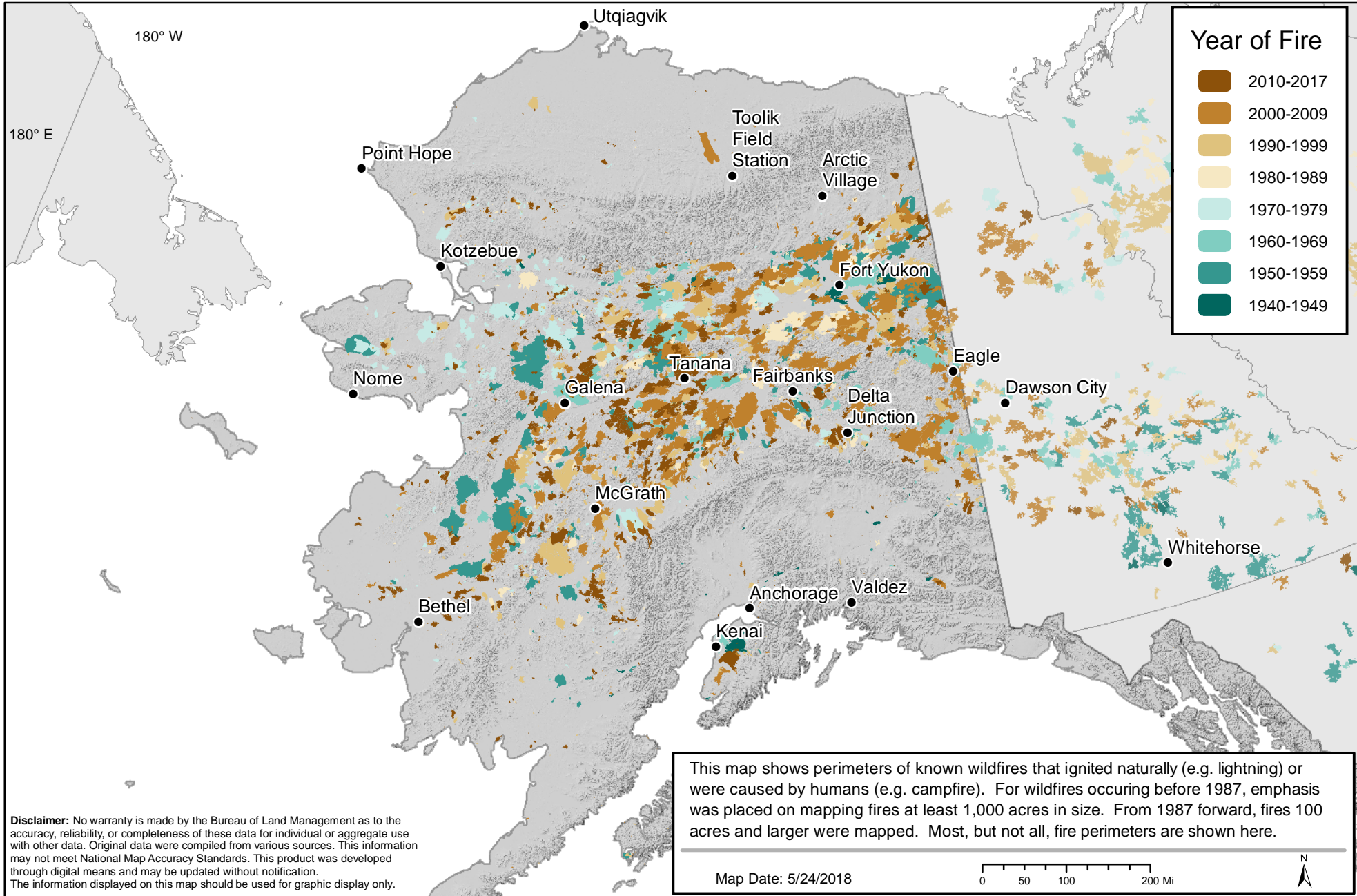




Wildland Fire History 1940 - 2017.



Disclaimer: No warranty is made by the Bureau of Land Management as to the accuracy, reliability, or completeness of these data for individual or aggregate use with other data. Original data were compiled from various sources. This information may not meet National Map Accuracy Standards. This product was developed through digital means and may be updated without notification. The information displayed on this map should be used for graphic display only.

This map shows perimeters of known wildfires that ignited naturally (e.g. lightning) or were caused by humans (e.g. campfire). For wildfires occurring before 1987, emphasis was placed on mapping fires at least 1,000 acres in size. From 1987 forward, fires 100 acres and larger were mapped. Most, but not all, fire perimeters are shown here.