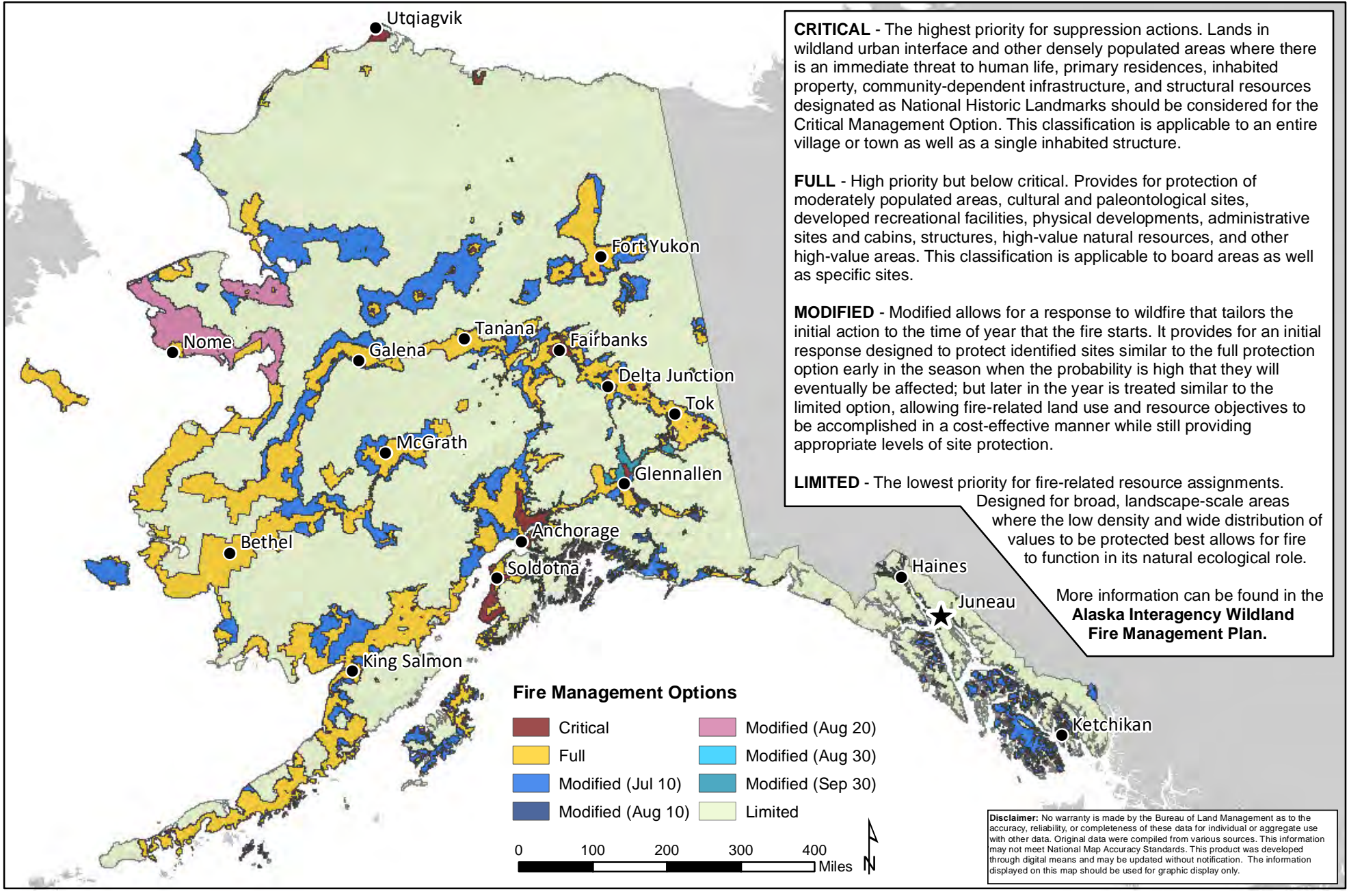




Alaska Wildland Fire Management Options, 2019.



CRITICAL - The highest priority for suppression actions. Lands in wildland urban interface and other densely populated areas where there is an immediate threat to human life, primary residences, inhabited property, community-dependent infrastructure, and structural resources designated as National Historic Landmarks should be considered for the Critical Management Option. This classification is applicable to an entire village or town as well as a single inhabited structure.

FULL - High priority but below critical. Provides for protection of moderately populated areas, cultural and paleontological sites, developed recreational facilities, physical developments, administrative sites and cabins, structures, high-value natural resources, and other high-value areas. This classification is applicable to board areas as well as specific sites.

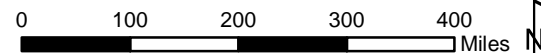
MODIFIED - Modified allows for a response to wildfire that tailors the initial action to the time of year that the fire starts. It provides for an initial response designed to protect identified sites similar to the full protection option early in the season when the probability is high that they will eventually be affected; but later in the year is treated similar to the limited option, allowing fire-related land use and resource objectives to be accomplished in a cost-effective manner while still providing appropriate levels of site protection.

LIMITED - The lowest priority for fire-related resource assignments. Designed for broad, landscape-scale areas where the low density and wide distribution of values to be protected best allows for fire to function in its natural ecological role.

More information can be found in the **Alaska Interagency Wildland Fire Management Plan.**

Fire Management Options

- | | |
|---|--|
| Critical | Modified (Aug 20) |
| Full | Modified (Aug 30) |
| Modified (Jul 10) | Modified (Sep 30) |
| Modified (Aug 10) | Limited |



Disclaimer: No warranty is made by the Bureau of Land Management as to the accuracy, reliability, or completeness of these data for individual or aggregate use with other data. Original data were compiled from various sources. This information may not meet National Map Accuracy Standards. This product was developed through digital means and may be updated without notification. The information displayed on this map should be used for graphic display only.